

CALIFORNIA



COLLEGE CONTACT

College Contact GmbH
Hanauer Landstraße 151-153 | 60314 Frankfurt am Main
Telefon: 069 - 907 2007 30
E-Mail: beratung@college-contact.com
Web: www.college-contact.com

HAWAII

GREEN RIVER COLLEGE STUDY ABROAD

CHOOSE
YOUR
GAP YEAR



www.greenriver.edu/GapYear

WE ARE LOCATED NEAR SEATTLE!

WASHINGTON

AUSTRALIA & NEW ZEALAND



I DIDN'T KNOW WHAT I WANTED TO STUDY YET, SO I DECIDED TO TAKE A GAP YEAR."

~Lisa Vessies
The Netherlands

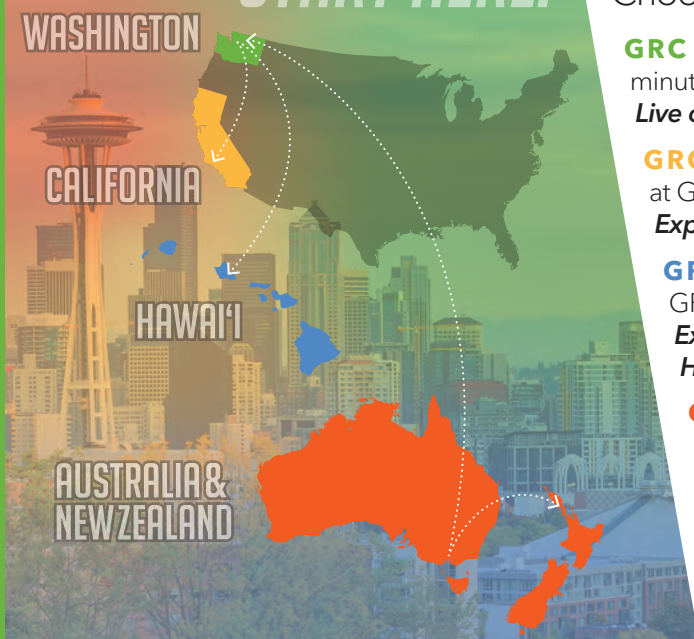


GREEN RIVER COLLEGE HELPED ME ACHIEVE MY GOAL OF BEING ACCEPTED INTO COPENHAGEN BUSINESS SCHOOL." ~Jacob Kristensen
Denmark

I WAS FAIRLY CERTAIN I WANTED TO BE A PILOT BEFORE MY GAP YEAR. HOWEVER, COMING TO GREEN RIVER JUST CONFIRMED THIS." ~Pascal Weber
Germany

GREEN RIVER COLLEGE (GRC) OFFERS EXCITING STUDY ABROAD OPPORTUNITIES FOR HIGH SCHOOL GRADUATES

START HERE.



Choose the academic adventure that works for you:

GRC ONLY » Spend 3, 6 or 9 months at GRC, located 45 minutes south of Seattle and 3 hours south of Vancouver, Canada.

Live on campus and take fun and interesting classes.

GRC TO CALIFORNIA » Spend September to December at GRC and January to May at Santa Barbara City College.

Experience majestic mountains and sandy beaches.

GRC TO HAWAII » Spend September to December at GRC and January to May at Kapi'olani Community College.

Experience the Pacific Northwest and the beautiful Hawaiian Islands.

GRC TO AUSTRALIA & NEW ZEALAND » Spend September to December at GRC and January to March in Australia and New Zealand. Return to GRC April to June (optional). *Skip winter and jump right into summer.*

ADMISSION REQUIREMENTS

- » Completed International Student Application
- » Financial/Bank Statement showing at least \$21,000 for 9 months of study, \$14,000 for six months, \$7,000 for three months.
- » \$50 non-refundable application fee
- » 16 years of age by date classes start (for GRC only)
 - 18+ California and Hawaii
 - 17+ Australia & New Zealand
- » Transcripts for last school attended (recommended)
- » Copy of passport photo page

ESTIMATED COSTS

COSTS	QUARTER (3 MONTHS)	ACADEMIC YEAR (9 MONTHS)
Tuition*	\$3,515	\$10,545
Living Expenses	\$2,935	\$8,805
Fees*	\$201	\$603
Books	\$349	\$1,047
TOTAL	\$7,000	\$21,000

* Based on 12-18 credits per quarter. Note: Expenses for SBCC and Kapi'olani may differ slightly depending on the cost of living and tuition. There are added expenses for Australia & New Zealand including airfare and other program costs.



APPLY NOW!

CALL: 1 (253) 288-3300

EMAIL: international@greenriver.edu

GREEN RIVER COLLEGE

12402 SE 320th Street
Auburn, WA 98092 USA

DATES & DEADLINES PER QUARTER

FALL

Preferred Application Deadline – **15 August, 2022**
Virtual Orientation – **31 August & 1 Sept, 2022**
Housing Move-in Day – **14 September, 2022**
In-person Orientation – **15 September, 2022**
Classes start – 19 September, 2022
Classes end – 8 December, 2022

WINTER

Preferred Application Deadline – **15 November, 2022**
Virtual Orientation – **14 & 15 December, 2022**
Housing Move-in Day – **28 December, 2022**
In-Person Orientation – **29 December, 2022**
Classes start – 3 January, 2023
Classes end – 23 March, 2023

SPRING

Preferred Application Deadline – **15 February, 2023**
Virtual Orientation – **15 & 16 March, 2023**
Housing Move-in Day – **29 March, 2023**
In-person Orientation – **30 March, 2023**
Classes start – 3 April, 2023
Classes end – 23 June, 2023

SUMMER

Preferred Application Deadline – **15 May, 2023**
Virtual Orientation – **7 & 8 June, 2023**
Housing Move-in Day – **28 June, 2023**
In-person Orientation – **29 June, 2023**
Classes start – 3 July, 2023
Classes end – 24 August, 2023

Visit www.greenriver.edu/GapYear