

Hanyang University ERICA

Spring 2023



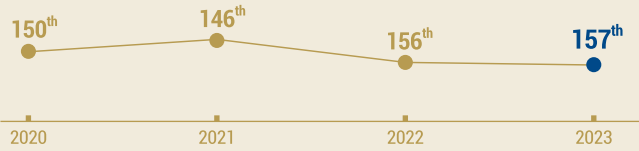
HANYANG UNIVERSITY ERICA
Education Research Industry Cluster @ Ansan

| Admission Guidelines for International Students

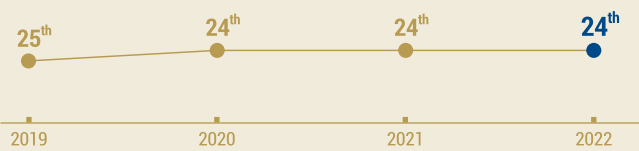
HANYANG UNIVERSITY ERICA

World Rankings

QS World University Rankings



QS Asian University Rankings



World University Rankings by Subject



Joong-Ang Daily Korean University Rankings (2021)



Ranked among TOP 10 universities,
6 consecutive years!

Achievements



Hanyang University has officially received the IEQAS(International Education Quality Assurance System) certification from the Ministry of Education for 7 consecutive years since 2012. Over 2,000 international students are studying at Hanyang University ERICA. (as of 2021)

Support Programs for International Students



Counseling Service for International Students

Hanyang is the first university in Korea to launch a Counseling Psychology Program. Two counsellors are dedicated to serving international students and offer counseling in 3 languages. (Korean, English, and Chinese)



Buddy & Tutoring Programs

• Buddy Program

In the program, each international student is assigned one Hanyang student who provides assistance with adjusting to the environment of Korea. International students can participate in various campus events and activities to become more acclimated to life in Korea.

• Tutoring Program

International degree students who might experience difficulties with courses in their major can request assistance from the Office of International Affairs(OIA) or their department office. A Hanyang student will be arranged to meet one-to-one with the international student or in a group setting.



Facilities for Muslim Students

The Hanyang University ERICA Campus has been active in its efforts to provide resources and facilities to better accommodate our growing Muslim population. The campus offers prayer rooms, a separate kitchen, and various kinds of special support even during the Ramadan period. (*See page 39 for facility photos)

Center for University-Industry Cooperation

- National & private research centers on campus
- 2,000 researchers from 200 venture companies on campus
- 1,500 ERICA affiliated companies off campus
- The nation's first university to launch the 4+1 Internship Program: Optional 1-2 semester internship offered at ERICA with affiliated companies. More than 1,000 students participate every year.

Undergraduate

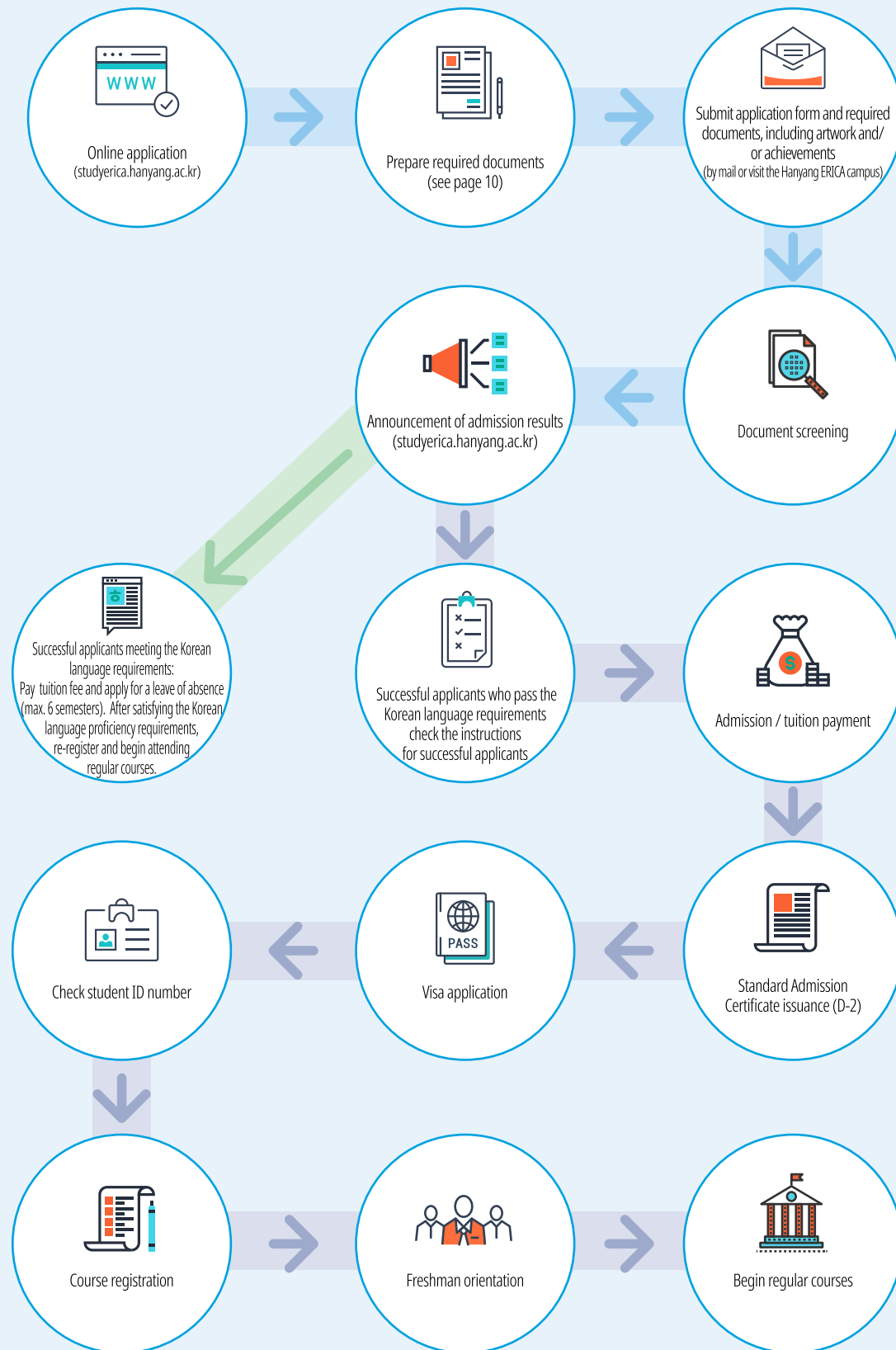
CONTENTS

1. Application Procedure	04
2. Important Notice for Spring 2023 Undergraduate Admission Guidelines	06
3. Application Schedule	07
4. ERICA Campus Departments and Majors	08
5. Eligibility Requirements for Application	09
6. Required Documents	10
7. Information on Document Verification	14
8. Screening Process	15
9. HYU Korean Language Proficiency Application Requirements	16
10. Scholarships for International Students	17
11. Mandatory Intensive Korean Language Courses for undergraduate 1 st Year Students(Freshmen)	18
12. Graduation Requirements	19
13. Tuition Fee Chart	19
14. Notice related to Registration	19
15. Dormitory Accommodations	20
16. Hanyang University ERICA English Track Programs	21



Application Procedure

Undergraduate



Application Procedure

Submission of Online Application

※ Admission applications are ONLY accepted online.

1. Click on the application website link at the ERICA international students admission homepage (studyerica.hanyang.ac.kr).
2. Register and log in to the application website.
3. Read the important notes and guidelines carefully.
4. Fill-out the application form and upload a passport-sized photo.
5. Compose your personal statement and study plan (written in English or Korean). Submission of a translated version is required if written in another language.
6. Review application thoroughly and pay the application fees.
7. Print-out the Application Form, Official Authorization for Inquiry into Enrollment and Academic Credit, Personal Statement, Study Plan, and Application Verification slip after payment.
8. Submit the printed application materials in the appropriate order within the designated period to the Office of International Affairs ERICA (see page 10-13 required submission document list).

*This procedure is for applying to one major (No. 1 to 7). For multiple applications, after the first application, applicants must fill-out the application and pay the application fee one more time. You can print out the documents of the 1st and 2nd choice major and submit them together. (See page 5-6)

*Please input your data (must match information on applicant's passport) as accurate as possible for the online application and remember to make a note of your examination number.

*The online application must be submitted by 17:00 (UTC +9:00 Seoul Standard Time) no later than the last submission day. Please complete all application procedures before the deadline, including payment of admission fees.

*The application fee must be paid for the online application to be printed. If an application number is assigned, the application is completed.

*Once the application fee has been paid, a completed application cannot be cancelled for any reason, nor can the applied major be changed.

*If an applicant presents false information or cannot be contacted, the application may be rejected. The applicant is solely responsible for disqualification caused by any of the aforementioned. Applicants are recommended to use gmail, hotmail, or a Korean email account (Email accounts such as 163, qq, may not be able to receive announcement emails).

*Application fee (including application site fee): KRW138,000 (Engineering Sciences, Computing, Science and Convergence Technology, Languages and Cultures, Communication, Business and Economics) / KRW210,000 (Design, Sports and Arts)

*If payment is made through PayPal, UnionPay, or Alipay, additional transaction fees may be charged.

Dual Application for Students Applying for an Undergraduate Program

Students who are applying to an undergraduate program can apply to two departments/divisions at the ERICA Campus.

• Criteria

- Students can apply to two majors available on the ERICA Campus.

※ Multiple applications for 2 majors within the Dance and Performing Arts or Applied Music Divisions are not permitted. (See p.8 Department and Major – blue colored box)

※ Multiple applications are permissible for 2 divisions or departments. (See p.8 Department and Major – white, blue, green colored boxes)

※ Multiple applications for 2 majors within 1 department (light green) are permitted.

-For example:

Applications	1st choice	2nd choice*	Permitted or not
Multiple applications for 2 majors within the Dance and Performing Arts or Applied Music Divisions	Applied Music Division-Vocal Major	Applied Music Division-Composition Major	Not permitted
Multiple applications are permissible for 2 divisions or departments	Artificial Intelligence	Korean Language and Literature	Permitted
	Artificial Intelligence	Applied Music Division-Composition Major	Permitted
	Applied Music Division-Composition Major	Architecture Department Architecture Major	Permitted
Multiple applications are permissible for 2 majors within 1 department	Media, Culture, and Design Technology Department - Media Technology Major	Media, Culture, and Design Technology Department - Culture Technology Major	Permitted

Application Procedure

Undergraduate

- The ERICA Campus and Seoul Campus recruit undergraduate students separately.
- Students who apply to the Hanyang University Seoul Campus can also apply for two majors at the ERICA Campus.
- In the case of applying to both the Seoul and ERICA Campuses, the required documents should be submitted separately to each respective campus.
- If an applicant for the ERICA Campus submits a document or artwork to the Seoul Campus, it will be considered as non-submitted.

• How to “dual-apply”

Fill out the online application for the 1st major of choice → Pay the admission fee (including extra fee) → Fill out the online application for the 2nd major of choice → Pay the extra fee / If there is a difference between the application fees for the 1st and 2nd major, the difference and the extra fees of the 2nd major need to be paid together.

-Example of payment of fees

Category	1st major	2nd major	Fees (KRW)
Apply for one major	Applied Music Division- Composition	-	₩210,000
	Artificial Intelligence	-	₩138,000
Dual-application	Artificial Intelligence	Korean Language and Literature	1 st major ₩138,000 2 nd major ₩8,000
	Artificial Intelligence	Applied Music- Composition	1 st major ₩138,000 2 nd major ₩80,000
	Applied Music- Composition	Design - Jewelry Fashion Design	1 st major ₩210,000 2 nd major ₩10,000
	Applied Music- Composition	Artificial Intelligence	1 st major ₩210,000 2 nd major ₩8,000

*Applicants cannot change their 1st and the 2nd major choices after the application fee has been paid.

• Process of selection

Applicants will undergo a screening process which will determine their eligibility based on an evaluation of the documents submitted and the results of their Admissions Test. Applicants who do not gain admission to their 1st choice major will automatically become candidates for admission to their 2nd choice major.

• Results

Results can be checked on the ERICA OIA website by entering the applicant's birth date and application number. Applicants for dual application (applying for 2 majors) must check both application results.

*Please input your info(must match the information on applicant's passport) as accurately as possible. And please make note of your application number.

• Changing the screening process for Department of Sports Science, Applied Music

The criteria for submitting artwork and assignment for Department of Sports Science, Applied Music have been changed. Please refer to page 16 for more information.

• The ends of Online Korean language test

As the spread of the COVID-19 has eased, the online Korean language test for students who have been unable to take the TOPIK test due to the COVID-19 will end after Fall 2022. Applicants for the Spring 2023 must submit the TOPIK transcript or the Hanyang Institute of International Education graduation certificate and transcript.

Important Notice for Spring 2023 Undergraduate Admission Guidelines

Important Notice for Spring 2023 Undergraduate Admission Guidelines

• Online Korean language test closed

As the spread of COVID-19 eased, the online Korean language test, which was conducted for students who failed to take the TOPIK (test) due to COVID-19, will end after Fall 2022 admissions. Applicants for the Spring semester of the 2023 should submit a TOPIK transcript or a graduation certificate and transcript from the Hanyang Institute of International Education(HIIE).

• Change in Korean Language Performance Admission Criteria for Architecture majors in the spring Semester of 2023

Starting from the spring semester of 2023 (application for admission starting from September 2022), the Korean language proficiency requirement for Architecture majors criteria for admission(both first year and transfer) will be changed from TOPIK Level 3 (or Hanyang University IIE Level 3) to Level 5.

• Announcement of Change in Korean Language Proficiency for Admission Criteria for Transfer Students in the 2024 Spring Semester

Starting from the spring semester of 2024 (application for admission starting from September 2023), the Korean language proficiency criteria for transfer students will be changed from TOPIK Level 3 (or Hanyang University IIE Level 3) to Level 4. Transfer students who fail to obtain Level 4 or higher will have to take a "leave of absence" at the same time as their first semester begins. If a level 4 or higher, result is submitted, students can attend courses normally after applying for "re-registration". (The Korean proficiency requirement for first-year students will remain the same as it is).

• Announcement for the implementation of second year transfers in the first semester of the 2024

Starting from spring semester 2024 (application for admission starting from September 2023), transfer in the second year will be available. Transferring to the third year remains unchanged, and "Transfer to the second year" will be added. The online application, required documents, and Korean language proficiency standards are the same for the two transfer types.

Application Schedule

Procedure	Schedule	Note
Guideline Announcement	August 8, 2022	
Online Application	September 1, 2022 10:00~ October 7, 2022 17:00	Check the ERICA international students admission website (http://studyERICA.hanyang.ac.kr) ※ Changes in Major or cancellation is not permissible after online application
Submit Required Documents	September 1, 2022 ~ October 7, 2022	- Refer to required documents (see pages 10-13) - Submit by mail or visit directly - Must submit before the deadline-mail is accepted with the postmark showing a date no later than the last day of the documents submission period. [Address] Office of International Affairs, 3rd floor, Student Welfare Center, Hanyang University ERICA Campus, 55, Hanyangdaehak-ro, Sangnok-gu, Ansan-si, Gyeonggi-do (15588), Republic of Korea ※ You can check the delivery status with the delivery number when sending via post office mail. The Hanyang University ERICA Campus is NOT responsible for loss of the documents when submitting via mail.
Result Announcement	December 14, 2022 (tentative)	Check the Office of International Affairs ERICA website (http://studyERICA.hanyang.ac.kr)
Tuition Payment	To be announced	Refer to Guidelines for Incoming ERICA undergraduate students (to be sent by email to the email address shown on the online application form).
Standard Admission Certificate Issuance	-	Scheduled to be issued only to those who apply for it.
Issuance of Student ID Number and Course Registration	-	To be sent by email to the email address shown on the online application form.
International Student Orientation	February 24, 2023 (tentative)	To be announced
Semester Begins	March 2, 2023	

- All schedules are based on the Korean standard time(KST). Those who fail to do so may be disqualified.
- Mail is accepted with the postmark showing a date no later than the last day of the document submission deadline.
- The schedule above is subject to change, and all notifications for admission, such as schedule changes, will be announced on the Office of International Affairs ERICA website. (There will be no announcement on a personal basis.)

ERICA Campus
Departments and
Majors

Undergraduate

※Please refer to the College/Department information on the website (studyERICA.hanyang.ac.kr) for detailed information about majors at the ERICA Campus

Field	College	department ●	division ●●	Major/Note
Engineering	Engineering Sciences	Architecture		Architecture (5 yrs.) Architectural Engineering (4 yrs.)
		Civil and Environmental Engineering		
		Transportation and Logistics Engineering		
		Electronics Engineering		
		Materials Chemical Engineering		
		Mechanical Engineering		※1 st year students (freshmen) admission only for Fall Semester
		Industrial Management Engineering		
		Bionano Engineering		※1 st year students (freshmen) admission only
		Robot Engineering		
Engineering	Computing ※Freshmen are not permitted to apply for majors (such as Computer Technology or Media Technology) but can apply to departments (such as Computer Science or Media, Culture, and Design Technology or Artificial Intelligence.)	Computer Science		
		Media, Culture, and Design Technology		Media Technology Culture Technology Design Technology
		Artificial Intelligence		
Natural Science	Science and Convergence Technology	Mathematical Data Science		
		Applied Physics		
		Pharmaceutical and Life Sciences		
		Nano-optic Electronics		
		Chemistry molecular Engineering		
		Marine Science Engineering		
Humanities	Languages and Cultures	Korean Language and Literature		
		Cultural Anthropology		
		Digital Culture and Contents		
		Chinese Studies		
		Japanese Studies		
		English Language and Culture		
		French Studies		
Social Sciences	Communication	Advertising and Public Relations		
		Information Society Media		
Social Sciences	Business and Economics	Economics		
		Economics		English Track
		Business Administration		
		Business Administration		English Track
Fine Arts	Design	Jewelry Fashion Design		
		Industrial Design		
		Communication Design		
		Interactive & Multimedia Design		
Physical Education	Sports and Arts	Sports Science		Sports Culture
Fine Arts		※Freshmen are not permitted to apply for majors		Sports Coaching
		Dance and Performing Arts		Contemporary Dance Creative Dance (Ethnic Dance)
Music		Applied Music		Vocal
				Composition
				Bass
				Guitar
				Drum
				Piano
				Brass (Saxophone, Trumpet, Trombone)

- The courses listed above are available for international students, and a fixed number of students are selected for each department/division and major.
- Courses are subject to change and will be confirmed before the semester begins. Therefore, please check the availability of your desired courses prior to online application.
- International students should decide upon their majors carefully since they are not allowed to change majors after admission. Students must reapply for admission to Hanyang University if a change of major is desired.
- Applicants can select up to 2 departments and apply for 1 or 2 choices for majors.
- Applicants can apply for English tracks when they submit their certificates of English language proficiency (Korean language proficiency is not required). All courses are taught in English in the English track.
- Multiple applications for 2 majors within Dance and Performing Arts or the Applied Music division are not permitted. (See p.8 Department and Major-blue colored boxes)

ERICA Campus
Departments and Majors

Eligibility
Requirements for
Application

- Multiple applications are permissible for 2 divisions or departments. (See p.8 Department and Major-white, blue, green colored boxes)
- Multiple applications are permissible for 2 majors within 1 department. (See p.8 Department and Major-green colored boxes)

- For example:

Applications	1st choice	2nd choice`	Permitted or not
Multiple applications for 2 majors within Dance and Performing Arts or Applied Music Division	Applied Music Division -Vocal Major	Applied Music Division - Composition Major	Not permitted
Multiple applications are permissible for 2 divisions or departments	Artificial Intelligence	Korean Language and Literature	Permitted
	Artificial Intelligence	Applied Music Division - Composition Major	Permitted
	Applied Music Division - Composition Major	Architecture Department Architecture Major	Permitted
Multiple applications are permissible for 2 majors within 1 department	Media, Culture, and Design Technology Department - Media Technology Major	Media, Culture, and Design Technology Department - Culture Technology Major	Permitted

Important Notice Related to Eligibility

- If applicants are found to have falsified any documents particularly related to the eligibility requirements, their admission will be immediately cancelled even if admission was previously granted.
- If the eligibility requirements for nationality or academic background are not met, admission will be cancelled.
- In the process of document screening, OIA can request additional documents if deemed necessary.
- For English track applicants, submitting an English language certificate corresponding to the admission criteria is a prerequisite for admission application.
- If the applicant has a parent who possesses Korean nationality or dual nationality, the student needs to apply as “Citizens outside or foreigner” on the admission website. (ERICA admission website: <http://goERICA.hanyang.ac.kr/> phone number: 1577-2876)

1 st Year Students (freshmen)	<p>1. Nationality: International students with foreign nationality and whose parents both have foreign nationality</p> <ul style="list-style-type: none">- If the student or his/her parents have dual citizenship including Korean nationality, the application will not be accepted.- Students who acquired foreign nationality or renounced (lost) Korean nationality: Both student and parents must have acquired foreign nationality and no longer possess Korean nationality before the student entered high school.- If an applicant's family relationship needs to be confirmed (parents' divorce, remarriage, death, missing, adoption, etc.), applicants must submit authenticating documents as evidence, e.g. certificate of divorce, certificate of family relationship, certificate of single parent, Custody certificate, certificate of death, certificate regarding missing persons, adoption certificate etc.- If the applicant's parent remarries with an individual who possesses Korean nationality and this new parent has officially adopted the applicant, the application will be not accepted.- If the student or his/her parents become nationalized Korean citizens from the date application started, the application will not be accepted. <p>2. Academic background: Applicants who graduated or are expected to graduate from high school</p> <ul style="list-style-type: none">- Necessary to complete elementary, middle, and high school curriculum equivalent to the Korean academic system- Home-schooling, cyber learning, adult education, and/or a high school graduate equivalency test for self-study in Korea are not recognized as an academic background.- Students who graduated or are expected to graduate from a five-year education school in China can apply for admission (dropping out after completing the five-year system for only three years, is not recognized as graduating from high school).- Students who graduated or are expected to graduate with an IB Diploma, A-Level can apply for admission.
Transfer	<p>1. Nationality : International students with foreign nationality whose parents both have foreign nationality</p> <ul style="list-style-type: none">- If the student or his/her parents have dual citizenship including Korean nationality, the application will not be accepted.- Those who have acquired foreign nationality or renounced Korean nationality (lost Korean citizenship): Students and their parents must have acquired foreign nationality or no longer possess Korean nationality for more than 3 years before from the application start date.- If the applicant's family relationship needs to be confirmed (parents' divorce, remarriage, death, missing, adoption, etc.), the applicant must submit authenticating documents as evidence. e.g. certificate of divorce, certificate of family relationship, certificate of single parent, custody certificate, certificate of death, certificate regarding missing persons, adoption certificate etc.- If an applicant's single parent, who possesses a foreign citizenship and has legal custody of the applicant, (re)marries an individual with Korean citizenship, the application will not be accepted.- If the student or his/her parents become nationalized Korean citizens from the date application started, the application will not be accepted. <p>2. Academic background : International students who (are expected to) complete(d) at least 2 years (4 regular semesters, excluding summer and winter sessions) at their home university and/or a foreign undergraduate university (must have earned all the credits required to complete 4 or more semesters) and wish to transfer to their third year (junior year) in undergraduate program at Hanyang University. (※2nd and 4th year Transfer Program is not available. (Only 3rd year))</p> <ul style="list-style-type: none">- Students who attended a 2–3-year program at a community college must graduate (with an associates degree or diploma equivalent to an associates degree) from the school or must be on the list of candidates for graduation.- Students who attended college(s) which is(are) not officially approved by the Korean Ministry of Education are not eligible to apply for transfer admission.- Admission will be cancelled if students have not completed at least 4 semesters at their former university.- Credits are transferred according to the credits that the students earned at their former university, and the maximum credits that are transferred may vary with each major.- Academic qualifications such as family study, online study, adult education, General Equivalent Diploma(GED), etc. are not recognized. <p>3. Major : International students who apply for relevant majors at Hanyang University according to their previous university's major.</p>

Required Documents

Undergraduate

1st Year Student (Freshmen) Admission

Notes for required documents

- All documents must be issued within one year from the date of application begins (excluding language transcripts).
- If documents are in Korean or English, or the same content is translated in English or Korean along with the original language, no notarization of the translation will be required.
- Those who are scheduled to graduate must submit their final academic certificates and transcripts to the Office of International Affairs after being admitted by Hanyang ERICA before the designated date. Failure to submit will result in disqualification of admission.
- All the documents must be submitted by mail or direct visit to the OIA. The documents submitted by e-mail are considered non-submitted and will be rejected.
- If the applicant's actual academic qualifications do not match the submitted materials, the applicants will be disqualified even if they have been initially admitted.
- All submitted materials will not be returned. Since students still need to apply for a visa after being admitted, students are recommended to prepare multiple copies of the materials for use when preparing the admission materials.
- Applicants are responsible for supplying correct contact information on the application documents. Failure to do so may result in the inability of OIA to contact the applicant, which in turn can lead to disqualification.

• All of the submitted documents must be originals (except if a copy is allowed to be submitted (see note section below))

A : Korean/English Translation notarization required(O) or not(X) B : Apostille/Consul's certificate Required(O) or not(X)			
No	Required Documents	A B	Note
1	Single copy of the Application Form		Must be printed out after online application through the website of the Office of International Affairs, and application fee must be paid See Submission of Online Application on page 5 for detailed information
2	Single copy of School Information Confirmation form official authorization for Inquiry into Enrollment and Academic Credit		Automatically printed when printing out the online Application Form ※English or Korean (must include a translated copy if written in languages other than English or Korean) Must be filled out before the payment.
3	Single copy of Personal Statement and Study Plan		
4	Copy of college entrance examination transcript or graduation exam transcript	o x	Only for holders (Chinese students can choose to submit the transcript for the HuiKao or college entrance examination.)
5	Official high school (expected) graduation certificate	o o	<div><South Korea high school graduates> Submission of original copy (no translation notarization and authentication required)</div> <div><International high school graduates – except Korea and China> Apostille Certification or Consul Confirmation (Korean or English)</div> <div><Chinese high school Graduates - Regular high School> - Original copy of academic certification report from CHSI (English)</div> <div><Chinese high school graduates - Regular specialized high school, Vocational high School, Secondary Professional Schools, etc.> ① When submitting the online education certificate - Graduation certificate issued by the local education department (the authenticity can be checked online) + confirmation from the Korean consulate in China ② When submitting a certificate of academic qualifications processed offline - Fill out and submit the "School Information Confirmation Form" (download it when applying for admission) - Graduation certificate issued by the local education department + confirmation from the Korean consulate in China - Graduation certificate issued by the school: Which can be verified for their authenticity by education authorities such as provincial ministry of education, city ministry of education + confirmation from the Korean consulate in China</div> <div><Chinese high school graduates - Technical and Industrial Schools> - Online query results on the official website of the Ministry of Human Resources and Social Security (http://www.mohrss.gov.cn/) + confirmation of the Korean consulate in China</div> <div><Chinese high school graduates - Private Schools> - Graduation certificate issued by the school + confirmation from the Korean consulate in China - Copy of school establishment license (business unit certificate of incorporation or private school operating license) (no notarization required)</div> <div><Chinese high school pre-graduates> - Pre-graduation certificate issued by the school + confirmation from the Korean consulate in China (Submit graduation materials that matches the type listed above directly after graduation) - Graduation certificate can be temporarily replaced by "school-issued pre-graduation certificate + confirmation from the Korean consulate in China" before graduation - Documents other than graduation certificates must be submitted normally (School Information Confirmation Form, business unit certificate of incorporation or private school running license, etc.) ※ Upon graduation, submit an additional graduation certificate corresponding to applicant's school type</div>

Required Documents

A : Korean/English Translation notarization required(O) or not(X) B : Apostille/Consul's certificate Required(O) or not(X)			
No	Required Documents	A B	Note
6	Official high school transcripts, last 3-years	o o	Pre-graduates must submit additional transcripts for the entire academic year including the last semester immediately after graduation. Failure to submit will result in disqualification of admission. <South Korea high school graduates> Submission of original copy (no translation notarization and authentication required) <International high school graduates – except Korea and China > Apostille Certification or consul confirmation of transcript (Korean or English) <Chinese high school> Consul confirmation of transcript (Korean or English)
7	Proof of high school's maximum score criteria for each subject	x x	Proof of school's maximum score criteria for each subject according to the school regulations, plus a Korean or English translation (no translation notarization is required)
8	Copies of passports and ID card (applicants and his/her parents)	o x	<Applicants who are not Chinese citizens> - Applicants: A copy of passport must be submitted - Parents: A copy of passport or ID card (driver's license not accepted) must be submitted
		x x	<Chinese applicants> - Applicants: A copy of passport and ID card (driver's license not accepted) must be submitted - Parents: A copy of passport or ID card (driver's license not accepted) must be submitted
9	Official document indicating parent-child relationship between the applicant and his/her parents	o x	<Applicants who are not Chinese citizens> - Birth certificate or certificate of family relationship <Chinese applicants> - Certificate of Family Relationship, copy of household registry and translated copy of household registry - It is necessary to attach a copy of household registry that has all the information has updated within 1 year from the date the application started (parents and the student must be included). A Korean or English translation is also required (but no translation notarization is required). ※ If the applicant's family relationship needs to be confirmed (parents' divorce, remarriage, death, missing, adoption, etc.), the applicant must submit authenticated documents as evidence, e.g. certificate of divorce, certificate of family relationship, certificate of single parent, custody certificate, certificate of death, certificate regarding missing persons, adoption certificate, etc.
10	Certificate authenticating bank balance of USD20,000 equivalent or more	o x	<ul style="list-style-type: none">• Documents issued within one month of the date of application (copy of bankbook is not allowed)• Other currency that is equivalent to USD20,000 is possible (e.g. RMB140,000, KRW23,000,000, etc.)• Certificate of balance with expiration date must be valid until the date after classes begin- Those who have completed alien registration and stay in Korea must submit a certificate of balance issued by a Korean bank in their own name- Uzbekistan applicants staying in Uzbekistan can only submit it a Uzbekistan KDB bank certificate of balance.
11	Certificate of Korean language proficiency (choose one of the two) - Certificate of TOPIK score - Certificate issued by the Hanyang Institute of International Education ※Applicants who apply for the English Track programs do not have to submit.	x x	Certificate of Korean language proficiency (choose one from the two below) - Certificate of TOPIK score - Certificate issued by the Hanyang Institute of International Education (HIIE) - Validity of the HIIE Certificate: Certificate within two years from the registration start date. ※ Applicants who apply for the English Track programs do not have to submit.
12	Certificate of English language proficiency (TOEFL, IELTS - choose one of the two)	x x	<ul style="list-style-type: none">• Expiration date : after the starting date of the online application• Applicants for English Track programs must submit it. TOEFL iBT 80 or higher, IELTS 5.5 or higher• Applicants for Korean programs (all courses except those in the English Track) must submit it.※ Applicants who apply for English Track programs from English speaking countries (USA, England, Ireland, Canada, Australia, New Zealand) are exempt from submitting the certificate of English proficiency.
13	Artwork or achievements (only for those who apply for Design, Sports and Arts)	x x	<ul style="list-style-type: none">• If the 1st and 2nd choice of majors are both within the College of Design, the artworks or assignments only need to be submitted once (refer to page 16).• Admitted applicants of the local Chinese screening do not have to submit artwork nor assignment. (However, for those who would like to apply for the Hanyang International Scholarship Program, artwork and assignment must be submitted (same as the other applicants)).
14	Proof of nationality renunciation (only for those who were Korean citizens and changed nationality)	x x	Proof of renunciation of Korean citizenship with authorized date and other information indicated (both applicant and his/her parents) - explanation for nationality and date must be written
15	Other Documents	o x	Other certificates, etc.

Required Documents

Undergraduate

Required Documents – Transfer

Notes for required documents

- All documents can only be submitted within one year from the date the application started (excluding language transcripts)
- If documents are in Korean or English, or the same content is translated in English or Korean along with the original language, no notarization of the translation will be required.
- Those who are scheduled to graduate or are currently attending school must submit their final diploma and the last semester's (4th semester) transcript to the Office of International Affairs after being admitted by Hanyang ERICA before the designated date. Failure to submit will result in disqualification of admission.
- All the documents must be submitted by mail or by direct visit to the OIA. Documents submitted by e-mail are considered non-submitted and will be rejected.
- If the applicant's actual academic qualifications do not match the submitted materials, the applicants will be disqualified even if they have been initially admitted.
- All submitted materials will not be returned. Since students still need to apply for a visa after being admitted, students are recommended to prepare multiple copies of the materials for use when preparing the admission materials.
- Applicants are responsible for supplying correct contact information on the application documents. Failure to do so may result in the inability of OIA to contact the applicant, which in turn can lead to disqualification.
- **All of the submitted documents must be originals (except if a copy is allowed to be submitted (see note section below)).**

㉠ : Korean/English Translation notarization required(O) or not(X) ㉡ : Apostille/Consul's certificate Required(O) or not(X)				
No	Required Documents	㉠	㉡	Note
1	Single copy of the application form			Must be printed out after online application through the website of Office of International Affairs and fee must be paid See Submission of Online Application on page 5 for detailed information
2	Single copy of official authorization for Inquiry into Enrollment and Academic Credit			Automatically printed when printing out the online Application Form ※ English or Korean (must include a translated copy if written in languages other than English or Korean)
3	Single copy of Personal Statement and Study Plan			
4	High school graduation certificate	o	o	Only for students still attending a 4-year university (Those who graduate from high school in Korea should submit an original copy) Chinese students still attending 4-year university: Submission of online CHSI certificate of high school graduation(regular high school) or consul confirmation (vocational high school, vocational secondary school, technical school) is required
5	Certificate of graduation (or enrollment/expected graduation) of former university	o	o	<Applicants from universities in Korea> - Submission of original copy (no translation notarization and authentication required) <International university students except Korea and China> - Apostille Certification or Consul Confirmation (English or Korean) <Applicants from universities in China> - The original copy of CDGDC or CHSI certificate (English) - Students who are expected to graduate must submit CHSI Student Status Certification Report (English), the original copy of CDGDC or CHSI certificate (English) is must be submitted after graduation.
6	Transcript from former university	o	o	Must submit transcripts with the scores of all grades and credits of all semesters for credit transfer. Otherwise, credits will not be transferred. <Applicants from universities in Korea> - Submission of original copy (no translation notarization and authentication required) <International university students except Korea and China> - Apostille Certification or Consul Confirmation (English or Korean) <Applicants from universities in China> - Consul Confirmation (English and Korean) or the original copy of CDGDC or CHSI certificate (English) pick one of the two
7	Proof of previous university's (relevantmajor) required credits for graduation, criteria for grade evaluation	x	x	For those who applying for transfer admission, proof of meeting previous university's (applicant's major) required credits for graduation and criteria for grade evaluation (proof of meeting the requirements for full marks stipulated by the university and proof of the marks converted according to the hundred mark system) must be submitted. English or Korean translation is required, but translation notarization is not required.
8	Copies of passports and ID card (applicants and his/her parents)	o	x	<Applicants who are not Chinese citizens> - Applicants : A copy of passport must be submitted - Parents : A copy of passport or ID card (driver's license not accepted) must be submitted
		x	x	<Chinese applicants> - Applicants : A copy of passport and ID card (driver's license not accepted) must be submitted - Parents : A copy of passport or ID card (driver's license not accepted) must be submitted

Required Documents

㉠ : Korean/English Translation notarization required(O) or not(X) ㉡ : Apostille/Consul's certificate Required(O) or not(X)				
No	Required Documents	㉠	㉡	Note
9	Official document indicating parent-child relationship between the applicant and his/her parents	o	x	<Applicants who are not Chinese citizens> - Birth certificate or certificate of family relationship <Chinese applicants> - Certificate of Family Relationship, copy of household registry and translated copy of household registry - It is necessary to attach a copy of household registry that has all information updated within 1 year from the date the application started (parents and the student must be included) A Korean or English translation is also required (no translation notarization is required). ※ If the applicants family relationship needs to be confirmed (parents' divorce, remarriage, death, missing persons, adoption, etc.), the applicant must submit authenticating documents as evidence. e.g. certificate of divorce, certificate of family relationship, certificate of single parent, custody certificate, certificate of death, adoption certificate, etc.
10	Certificate authenticating bank balance of USD20,000 equivalent or more	o	x	• Documents issued within one month of the date of application (copy of bankbook is not allowed) • Other currency that is equivalent to USD20,000 is possible (e.g. RMB140,000, KRW23,000,000, etc.) • Certificate of balance with expiration date must be valid until the date after classes begin - Those who have completed alien registration and stay in Korea must submit a certificate of balance issued by a Korean bank in their own name - Uzbekistan applicants staying in Uzbekistan can only submit Uzbekistan KDB bank certificate of balance.
11	Certificate of Korean language proficiency (choose one of the two below) - Certificate of TOPIK score - Certificate issued by the Hanyang Institute of International Education ※ Applicants who apply for the English Tracks do not have to submit.	x	x	Choose one among the Certificate of TOPIK level 3 or higher, or Certificate of Korean language course level 3 or higher from the Hanyang Institute of International Education. - Expiration date: should expire after the starting date of online application - Validity of the HIIE Certificate: is within two years from the registration start date.
12	Certificate of English language proficiency (TOEFL, IELTS - choose one of the two)	x	x	• Expiration date: Should expire after the starting date of the online application • Applicants for English Tracks must submit it. TOEFL iBT 80 or higher, IELTS 5.5 or higher • Applicants for Korean courses (all courses except those in the English Track) must submit it. ※ Applicants who apply for English Tracks from English speaking countries (USA, England, Ireland, Canada, Australia, New Zealand) are exempt from submitting the certificate of English proficiency.
13	Artwork or achievements (only for those who applied for Design, Sports and Arts)	x	x	• If the 1st and 2nd choice of majors are both within the College of Design, the artwork or assignments only need to be submitted once (refer to page 16) • Admitted applicants of the local Chinese screening do not have to submit artwork nor assignment (However, for those who would like to apply for the Hanyang International Scholarship Program, artwork and assignment must be submitted the (the same as the other applicants)).
14	Proof of nationality renunciation (only for those who were Korean citizens and changed nationality)	x	x	Proof of renunciation of Korean citizenship with authorized date and other information indicated (both applicant and his/her parents) -explanation for nationality renunciation and date must be written
15	Other Documents	o	x	Other certificates, etc.

Notice for Documents Submission

1. Submit the documents in order

2. Do not use a stapler nor paper clips
3. Do not submit any photos or recommendation letters

4. All documents should be in A4 size

Admission Inquiries and Document Submission

- **Office : Office of International Affairs (Undergraduate Admission) ERICA**
Email Inquiries : studyerica@hanyang.ac.kr(make sure to write down the applicant's application number and name in English in the email)
Phone : + 82-31-400-0791~0795
Address : Office of International Affairs, 3rd floor, Student Welfare Center, Hanyang University ERICA Campus, 55, Hanyangdaehak-ro, Sangnok-gu, Ansan City, GyeongGi Province 15588, South Korea
- **China Regional Office : HYU Shanghai center**
Phone : +86-21-5169-7003
Wechat : hyushanghaicenter
Address : 上海市徐汇区肇嘉浜路1033号徐家汇国际大厦501室
Website : www.hanyangdaxue.com

Information on Document Verification

Undergraduate

Apostille Certification and Consul Confirmation

Applicants are required to submit the Apostille and Consul Confirmation document (see required documents on pages 10-13 Requirements) during the submission period.

● Apostille Convention

Apostille is a certificate specifying the modalities through which a document issued in one of the signatory countries can be certified for legal purposes in all the other signatory states.

The applicant can get the Verification of Apostille verification or certificate from a related institution. The document must be submitted along with the original documents of the applicant's academic background (graduation/degree and transcript).

● Accreditation of the Consular Affairs Bureau

To obtain a Consul Certification, the applicant can visit a ① Korean diplomatic office in the country where the applicant's school is located or ② applicant's school's located country's diplomatic office in Korea. That document must be submitted along with the original documents of the applicant's academic background (graduation/degree and transcript).

- Apostille Convention countries (as of 2022)

Area	Members
Asia, Oceania	Australia, China (Macao, Hong Kong), Japan, Republic of Korea, New Zealand, Brunei, Mongolia, Cook Islands, Fiji, India, Marshall, Islands, Mauritius, Vanuatu, Samoa, Tonga, Niue, Tajikistan, Philippines, Palau
Europe	Albania, Austria, Belarus, Belgium, Bosnia and Herzegovina, Bulgaria, Croatia, Cyprus, Czech Republic, Denmark, Estonia, Finland, France, Georgia, Germany, Malta, Greece, Hungary, Iceland, Ireland, Italy, Latvia, Lithuania, Luxembourg, Monaco, Montenegro, Netherland, Norway, Poland, Portugal, Russia, Romania, Serbia, Slovakia, Slovenia, Spain, Sweden, Switzerland, Turkey, Kyrgyzstan, Macedonia, Ukraine, England, Andorra, Armenia, Azerbaijan, Moldova, Liechtenstein, San Marino, Kazakhstan, Uzbekistan, Kosovo
North America	United States
Latin America and the Caribbean	Argentina, Mexico, Panama, Suriname, Venezuela, Antigua and Barbuda, Bahamas, Barbados, Belize, Colombia, Dominica, Dominican Republic, Ecuador, El Salvador, Grenada, Honduras, St. Vincent, Peru, Trinidad and Tobago, Saint Lucia, St. Kitts and Nevis, Costa Rica, Uruguay, Nicaragua, Paraguay, Brazil, Chile, Guatemala, Bolivia, Guyana
Africa	South Africa, Botswana, Burundi, Lesotho, Liberia, Namibia, Sao Tome and Principe, Eswatini, Malawi, Cape Verde, Seychelles
Middle East	Oman, Israel, Bahrain, Morocco, Tunisia

*Detailed and updated information regarding regional authorities can be found at www.hcch.net

Academic History Verification Center of the Chinese Ministry of Education (For applicants who graduate from a Chinese high school or community college)

● Information

- Name of the organization : China Academic Degree & Graduate Education Development Center
- Website : www.chsi.com.cn
- Address : 北京市海淀区北四环中路238路伯彦大厦506室Postal code: 100191
- Email : xlrz@moe.edu.cn
- Phone : +86-10-6113-9123 (Fax : +86-10-6113-9120)
- For documentation inquiries, please contact the designated person in each province. (省)
- (Further information : <http://www.chsi.com.cn/xlrz/201202/20120228/284945923.html>)

● Online certificate request and visit application

<http://www.chsi.com.cn/xlrz/index.jsp>

Information on Document Verification

China Academic Degree & Graduate Education Development Center of the Ministry of Education (for applicants who graduated from a 4-year general university in China)

● Information

- Name of the organization : China Academic Degree & Graduate Education Development Center
- Website : www.cdgd.edu.cn
- Address : 北京市海淀区王庄路1号同方科技广场B座18层(Postal code:100083)
- Email : zhc@mail.cdgd.edu.cn
- Phone : +86-10-8237-9480 (Fax: 86-10-82378718)
- Cost deposit account (CNY) : 中国银行北京中关村科技园区支行, 816618500308
- ※ Issuance of the certificate is also available through the Confucius Institute in Seoul in South Korea
- Website : <http://renew.kongzi.co.kr/?c1=4&c2=00> > Chinese Accreditation of Education
- Phone : +82-2-554-2688, Email: cis88@cis.or.kr

● Issuing Documents : <http://www.cdgd.edu.cn/cn/rzxz/284236.shtml>

● Certification Procedured : <http://www.cdgd.edu.cn/cn/rzxz/265554.shtml>

● Online Application Guidance : <http://www.cdgd.edu.cn/cn/rzxz/265553.shtml>

Screening Process

Screening Process 1 (Document Screening)

College	Engineering Sciences, Computing, Science and Convergence Technology, Languages and Cultures, Communication, Business and Economics (all departments except for Sports and Arts)
Screening Process	Document screening - Comprehensive evaluation of all items on the documents submitted by the applicant according to the internal standards of the university ※The evaluation criteria are not disclosed.

Screening Process 2 (Submission of Artwork or Achievements)

College	College of Design: Jewelry Fashion Design, Industrial Design, Communication Design, Interactive & Multimedia Design / College of Sports and Arts: Applied Music, Dance and Performing Arts, Sports Science
Screening process	1) General process: Document screening + Artwork & Achievements screening 2) China local process: Interview + practical examination (except Sports Science) ※ Regarding onsite admission in China, the detailed schedule will be announced on the website of the Shanghai Center, Hanyang University. After additional document screening, the final admission results will be announced at the designated date. The schedule for the local Chinese process (College of Design, College of Applied Music, College of Dance) will be announced on the website of the Shanghai Center, Hanyang University. After the local Chinese screening process, there will be document screening. After the screening process, there will be a notification of admission. Applicants for the local Chinese screening will have their artwork and assignment submission replaced with a local practical examination. (Notification of admission will be posted on the same date with general applicants.) ※ For further information about local screening in China check: Hanyang University Shanghai Center, www.hanyangdaxue.com / Phone: +86-21-51697003

Screening Process 2: More information about Document Screening + Artwork Screening

Type 2 : Details of submission of artwork and assignment

*If applying for 2 majors (eg. 1st major is Dance and Performing Arts, 2nd major is Applied Music) two artworks are required for submission stored in 2 separate USB drives.

Screening Process

Undergraduate

<College of Sports and Arts Freshmen/Transfer>

- **Division of Applied Music Freshmen/Transfer** (All video and recording files need to be stored in a USB drive, CDs are not accepted. The name of major must be entered in file name.)

Department	Content
Applied Music (Voice, Bass, Guitar, Drum, Piano, Brass (Saxophone, Trumpet, Trombone))	Submit 2 videos or instrumental performance and singing. The video must be within 5 minutes and include applicant's face. - Calibration and editing of pitch are prohibited. - Include a popular music repertoire. - A video of self-introduction in Korean within 1 minute is required.
Applied Music (Composition)	Submit 2 music recordings and music score of your own composition. *Submit one additional video of your performance. - A video of self-introduction in Korean within 1 minute is required.

- **Division of Sports Science Freshmen/Transfer** (All video and recording files need to be stored in a USB drive, CDs are not accepted.)

Department	Content
Sports Coaching	- Submit two 2-minute 40-second or less videos of sports activities (must include applicant's face). - Must be different kinds of sports
Sports Culture	- Self-introduction video in Korean(including personal sports skills and ability description / within 1 minute)

- **Division of Dance and Performing Arts Freshmen/Transfer**
(1st Year students (Freshmen))(All video and recording files need to be stored in USB drive, CDs are not accepted.)

Department		Content
Dance and Performing Arts	Contemporary Dance	- 1 work of modern dance or ballet lasting 2minutes and 30 seconds (Choose 1 music among classical music, creative music, or freestyle music)
	Creative Dance (Ethnic Dance)	- 1 work of student's own freestyle composition, secondary specialty freestyle (Choose 1 music among Korean traditional dance music, traditional music from the student's home country, or creative music - Student must prepares the music of his/her own specialty and secondary specialty each. The total 2 songs must not exceed 2 minutes and 30 seconds).

<College of Design Freshmen/Transfer>

Applicants who apply for both the 1st and 2nd choices at the College of Design only need to submit artworks once. (Do not mount, coat or install photo frames on works, otherwise they will be rejected.)

Department	Content
College of Design	A total of two original works (1 Pencil Drawing, 1 Color Drawing) and a video file on USB that explains your works in Korean (no time limit)

※Application number and English name must be written both on the back of the artwork paper and on the USB.

※Admitted applicants of the local Chiese screening do not have to submit artwork nor assignment. However, for those who choose to apply for the Hanyang International Scholarship Program(HISP) when filling out the online application form for admission, artwork and assignment must be submitted (same as the other applicants).

HYU Korean Language Proficiency Application Requirements

ERICA Campus Korean Language Proficiency Application Requirements (choose 1 of 2)	
	1. Applicants who have TOPIK level 3 or higher
	2. Applicants who completed the Korean Language Program at Hanyang University IIE, achieving level 3 or higher

There is no need to submit Korean scores when applying for an English track major. However, an English language proficiency certificate is required. If the applicant's English grades do not meet the admission criteria, the admission will be rejected.

※ The Korean language proficiency application requirements for first year students and transfer students in the Architecture major is TOPIK level 5 or higher (or Hanyang University IIE level 5 or higher).

※ Korean Government Scholarship Program (KGSP) students should follow the Korean language requirements enacted by NIIED.

ERICA campus IIE : <http://ericaie.hanyang.ac.kr/> (Inquiries: ericaie@hanyang.ac.kr / +82-31-400-5847)

Seoul campus IIE : <https://iie.hanyang.ac.kr/> (Inquiries: iie@hanyang.ac.kr / +82-2-2220-1663, 1666)

Scholarships for International Students

*Students are not allowed to receive other on-campus scholarships, excluding student TOPIK scholarships.

For newly admitted students (undergraduate)

● Hanyang International Scholarship Program (HISP)

Undergraduate HISP grantees are evaluated and selected based on document screening results and/or artwork (portfolio) among undergraduate applicants who are eligible to apply for the HISP.

- Qualifications : Applicants who are eligible for document screening or submitted their artwork (portfolio)
- Benefits : 100%, 70%, or 50% reduction in tuition
- Scholarship period : Full coverage – 1st Year Students (Freshman) 8 semesters / Transfer Students 4 semesters
- Requirements : Scholarship recipients must achieve a minimum 2.5 GPA each semester to retain their scholarships.
※ The number of grantees may differ by semester
- How to apply : Application for the HISP scholarship can be done when submitting the application online.

● The Hanyang Scholarship for Excellence in English Language Proficiency

Issued to freshmen who have excellent grades in English.

- Benefits:
TOEFL iBT 89 - 93, IELTS 6.5: 30% reduction of tuition
TOEFL iBT 94 - 109, IELTS 7 - 7.5: 50% reduction of tuition
TOEFL iBT 110 - 120, IELTS 8 or above: 100% reduction of tuition
- Scholarship period: The first semester only
- Application Period: Only applicable to students who submit their English scores during the submission period, and will be selected at the time of admission (students do not need to apply directly)
※Students whose native language is English cannot apply with TOEFL or IELTS scores.

● Hanyang Scholarship for Excellence in TOPIK

The Undergraduate Hanyang Scholarship for Excellence on the TOPIK is awarded to applicants who have achieved outstanding results on the test (only documents submitted during the official application period are acceptable).

- Benefits
TOPIK level 4 holders : 30% reduction in tuition
TOPIK level 5 holders : 50% reduction in tuition
TOPIK level 6 holders : 100% reduction in tuition
- Scholarship period : The first semester only
- How to apply : Only students who submit Korean language transcript during the regular Korean language transcript submission period, and only those who apply for admission (students do not need to apply directly).

● The Hanyang Institute of International Education (IIE) Scholarship

The Undergraduate Hanyang Institute of International Education Scholarship is awarded to applicants who have completed the Korean language program at the Hanyang IIE (only documents submitted during the official application period are acceptable).

- Benefits
Hanyang IIE level 4 : 30% reduction in tuition
Hanyang IIE level 5 : 50% reduction in tuition
Hanyang IIE level 6 : 100% reduction in tuition
- Scholarship period : The first semester only
- How to apply : Only students who submit documents during the regular period of submission of documents, and only those who apply for admission (students do not need to apply directly).

Scholarships for International Students

Undergraduate

For registered students (Undergraduate)

● The Hanyang International Excellence Awards (HIEA)

- HIEA is awarded to international students who have achieved notable academic progress at Hanyang University.
- Qualifications : Students with a valid TOPIK level certificate and insurance who achieve a minimum GPA of 3.0 at the undergraduate level / a minimum GPA of 4.0 at the graduate level in the previous semester
 - Recipients are selected through documents screening. Recipients will receive a 100%, 70%, 50%, or 30% tuition reduction according to their evaluation results.
 - Scholarship period : One semester
 - Required documents : To be announced on the OIA website (study.hanyang.ac.kr)
 - Application period: Beginning of the semester (March, September)

● TOPIK Scholarship

- Qualifications
 - ① International students who are currently enrolled for a degree program at Hanyang University ERICA Campus (below 6 semesters)
 - ② Ineligible : 7 semesters or higher, student on a leave of absence, scheduled to graduate, extended their studies on the undergraduate or graduate level, language program student
 - ③ However, transfer students can apply even during their 7th-8th semester
 - ④ Applicants who have obtained TOPIK level 4 or higher in each semester
- Criteria for application
 - ① First time applicants

Grade	TOPIK Level 4	TOPIK Level 5	TOPIK Level 6
1~2 semester (transfer student: 5~6 semester)	KRW500,000	KRW750,000	KRW1,000,000
5~6 semester (transfer student: 7~8 semester)	KRW300,000		

- *If you have acquired TOPIK level 4 or higher score twice in a semester, you can apply with the highest level.
- ② Second time applicants : KRW 300,000 (You can get this scholarship up to two times, and it is only applicable when the TOPIK level rises)
- ③ This scholarship can be awarded with other on-campus scholarships.
- How to apply : Apply through the HY-in portal
- Submission documents : The new TOPIK certificate
- When to apply : End of semester (June and December)

Mandatory intensive Korean Language Courses for Undergraduate 1st Year Students (Freshmen)

Who must take the classes?

- 1st year students (freshmen) entering the degree program, if both parents are foreign nationals (excluding transfer students and English language track students).
- ※ Students who acquire a TOPIK level 5 or higher, or Hanyang IIE level 5 or higher at the Hanyang University Institute of International Education are exempt from having to enroll in the mandatory intensive Korean language program (only for students who submit documents during the designated period of submission of Korean language certificates).

Course Introduction

- This course is specially designed to help international students improve their Korean language skills and adjust to university life.
- 20 credits of intensive Korean language courses will be offered (10 classes) during the first two semesters after admissions.
- Composed of five courses (10 credits) in the first semester and five courses (10 credits) in the second semester.
- Accredited credits are considered as graduation credits (elective course category).
- Courses in the intensive Korean language program are required for graduation, and if any classes are failed, they must be retaken in order to graduate.
- All remaining credits (10 credits) except for the mandatory 10 credits can be selected from available major courses and/or elective courses.

Graduation Requirements

- Regardless of the admission period (spring or fall semester), 1st year students (freshmen) need to complete 8 semesters while transfer students need to complete 4 semesters to graduate (the exception is for those who register and meet the early graduation requirements).
- Students in the Design, Sports and Arts College must achieve TOPIK level 3 or higher, students in other Colleges must achieve TOPIK level 4 or higher and submit the certificate in order to graduate (excluding those students who have enrolled in English Track programs).
- Students who have already submitted a TOPIK Level 4 or higher certificate upon admission may resubmit the certificate at the time of admission.

※Each department (major) has different graduation requirements, so please check the appropriate department's office for the exact graduation requirements.

Tuition Fee Chart

Tuition Fee Chart (This information is for Jul. 2022 and tuition fees are subject to change according to university policy.)

KRW(₩) / per semester

Fields	Admission Fee	Tuition
Humanities/ Social Sciences (Language and Cultures, Communication, Business and Economics)	₩195,000 (USD 162 / CNY 1,030)	₩4,344,000 (USD 3,604 / CNY 22,958)
Natural Science/ Physical Education (Science and Convergence, Sports and Arts - Sports Science)		₩5,061,000 (USD 4,199 / CNY 26,747)
Engineering (Engineering Sciences, Computing)		₩5,727,000 (USD 4,751 / CNY 30,267)
Fine Arts (Design, Sports and Arts - Dance and Performing Arts)		₩5,740,000 (USD 4,762 / CNY 30,336)
Medicine (Sports and Arts - Applied Music)		₩6,435,000 (USD 5,339/ CNY 34,009)

- ※Figures are based on the 2022 exchange rate, and thus the exact fee amounts are subject to change.
- ※Admission fee is paid only for the first semester of registration.

Notice related to Registration

Notice related to Registration

- Admission may be canceled if the documents submitted for admission are missing major details or if information is false or fraudulent. If the admission is canceled, the tuition fee paid will not be refunded. However, if the semester in which the tuition fee has been paid has not ended, tuition will be refunded in accordance with Hanyang University policy.
- Applicants whose admission has been canceled due to the above reasons at Hanyang or other universities will not be allowed to reenter for a certain period of time.
- Those who gain admission to more than two universities must enroll in only one university. If an applicant infringes on this rule, all acceptances and/or admissions from universities may be cancelled (Hanyang University Seoul Campus and Hanyang University ERICA Campus are considered separate universities).
- Applicants who gain admission to Hanyang must pay the tuition fee during the registration period. Failure to do so will be interpreted as the student's intention to forgo the admission.
- In the case of wire transfers (T/T) from overseas, the payment amount should include all international transaction fees. when funds are transferred overseas, the bank will charge their own overseas transfer fee. This amount is in addition to the school registration fee. Therefore, please note that there may be additional transaction fees of KRW20,000 to 30,000 when transferring funds. However, students will be reimbursed these extra fees by Hanyang ERICA. Please note that the T/T amount is insufficient, the transfer will be rejected or other errors may occur.
- Applicants may not be able to gain admission if they do not follow the admission procedures of the university or do not submit all the required documents.

Notice related to Registration

Forgoing Admission after Registration

- For those who wish to forgo admissions after tuition fee payment has been made, the Waiver of Admission (Hanyang University Form) must be submitted to the OIA within the designated period. In case admission is forgone after the semester begins, the tuition fee will be refunded according to the terms and conditions related to the tuition fee of enrolled students.

Insurance

- All new students must apply for the National Health Insurance Service of Korea in accordance with the laws of the Republic of Korea (National Health Insurance Act: Foreigners who stay inside of Korea for more than 6 months must apply for the National Health Insurance Service as a Locally Insured Person, and those who are in default on the National Health Insurance fee are restricted from getting a residential permit such as visa extension).
- In order to protect all students' other insurance coverage that is not covered by the National Health Insurance Service of Korea, it is necessary to enroll in International Student Injury Insurance. The insurance fee needs to be paid together with the tuition fee (insurance will be included on the tuition bill. You cannot enroll without paying the insurance).
- Detailed information related to insurance subscription will be provided after admission acceptance.

Undergraduate

Dormitory Accommodations

Dorms on the ERICA Campus

※See page 42 for facility photos

Type	Name of Dorm	Room Type	Fee (6 months)
On-campus	Injae Hall	Room for 1 person (private bathroom)	Approx. KRW2,504,000 (USD4,323, CNY27,522)
		Room for 2 people (shared bathroom)	Approx. KRW1,253,000 (USD1,041, CNY6,627)
	Changeui Hall	Room for 1 person (private bathroom)	Approx. KRW2,665,000 (USD2,214, CNY14,094)
		Room for 2 people (private bathroom)	Approx. KRW1,752,000 (USD1,456, CNY9,266)

※Figures are based on the July 2022 exchange rate, and thus the exact amount of fees are subject to change.

Dormitory Administration Team contact info

Office : ERICA Residence Hall

Website : <http://hydorm.hanyang.ac.kr/>

Phone : +82-31-400-4378, 4379, 4380

Address : Hanyang University ERICA Campus Residence Hall, 55 Hanyangdaehak-ro, Sangnok-gu, Ansan City,
GyeongGi Province 15588 South Korea

※ This Guideline is written in Korean and translated in other languages. Thus, the Korean guideline takes precedent over the translated versions in case of any conflicting information of its interpretation arises.

Hanyang University ERICA English Track Programs

English track programs have been established in the **Department of Economics** and **Department of Business Administration** at the ERICA Campus. In the English tracks, all courses are taught in English, and English language proficiency is required for applicants (not Korean language proficiency).

Advantages of the ERICA English Track Programs



Extensively implemented and chosen **IC-PBL (industry-coupled problem-based learning)** as learning method. This teaching practice has been getting attention from many universities in the country in that the methodology is strongly welcomed by industries.



The division of Business Administration obtained AACSB accreditation in 2018. **AACSB recognized** Hanyang ERICA's excellent education and research performance as less than five percent of total business schools in the world have received the AACSB accreditation.



Global Experiences

Offers scholarships for its own specialized **dual-degree programs** with the University of Wisconsin-River Falls and **exchange programs** with over 300 partner universities.



Mentoring

Offers our own **special mentoring programs** aimed at getting necessary assistance for both academic studies and the Korean language, and provides cultural activities to better understand Korean culture.



Career Development

We have been showing **strong job placement record** in terms of both quality and quantity. Our graduates have continuously been employed in top-priority organizations. (Government agencies, public/private companies, financial institutions, academia, research institutes, start-ups, etc.)

Business Administration Curriculum

Year	Course Title
1 st year	Introductory Statistics for Business, Principles of Business Administration, Principles of Economics 1, Introduction to Accounting, Principles of Economics 2
2 nd year	Advanced Statistics for Business, Global Business Communication, Quantitative Business Analysis, Marketing Management, Financial Management, Business Ethics and Corporate Social Responsibility, Intermediate Accounting 1, Microeconomics 1, Corporation Law, Operations Management, Organization Behavior, Consumer Behavior, Theory of Investment
3 rd year	Marketing Research, Managerial Accounting1, Strategic Human Resources Management, Management Information Systems, Strategic Management, E-Business, Managerial Accounting2, Technology Management, Financial Economics
4 th year	Financial Economics 2, Logistics Management, Economic Theory of Regions, Financial Institutions and Markets, Economic Theory of Global Regions, Economic Development

* Courses offered in English are subject to change.

Economics Curriculum

Year	Course Title
1 st year	Principles of Economics 1, Principles of Business Administration, Principles of Economics 2, Mathematics for Economics
2 nd year	Introduction to Statistics, Microeconomics 1, Macroeconomics 1, Introduction to Accounting, Global Business Communication, Financial Management, Microeconomics 2, Macroeconomics 2, International Economics, Labor Economics
3 rd year	Urban Economics, Mathematical Economics, Monetary Economics, Industrial Organization, Introduction to International Finance, Labor Market Policy, Game Theory Financial Economics, Theory of Investment, Technology Management
4 th year	Financial Economics 2, Economic Theory of Regions, Strategic Management, Economic Development, Economic Theory of Global Regions, Statistics Programming and Data Analysis

* Courses offered in English are subject to change.

Eligibility Requirements for Admission

Type	Eligibility Requirements
Undergraduate School (1 st year students Only)	1. Nationality: International students with foreign citizenship whose parents both have foreign citizenship - Students and their parents should have acquired foreign citizenship before the students entered high school - If the students and their parents have dual citizenship, they should all have relinquished their Korean citizenship before the student entered high school 2. Academic background: Those who have graduated or are expected to graduate from high school 3. Applicants for this English track major must submit TOEFL iBT 80 and higher, or IELTS 5.5 and higher. (Certificates of English language should expire after the starting date of online application.) Applicants from English speaking countries are exempt from submitting certificates of English language.

More information

[Admission Procedure](#) – Page 4

[Admission Schedule](#) – Page 7

[Scholarships](#) – Page 17-18

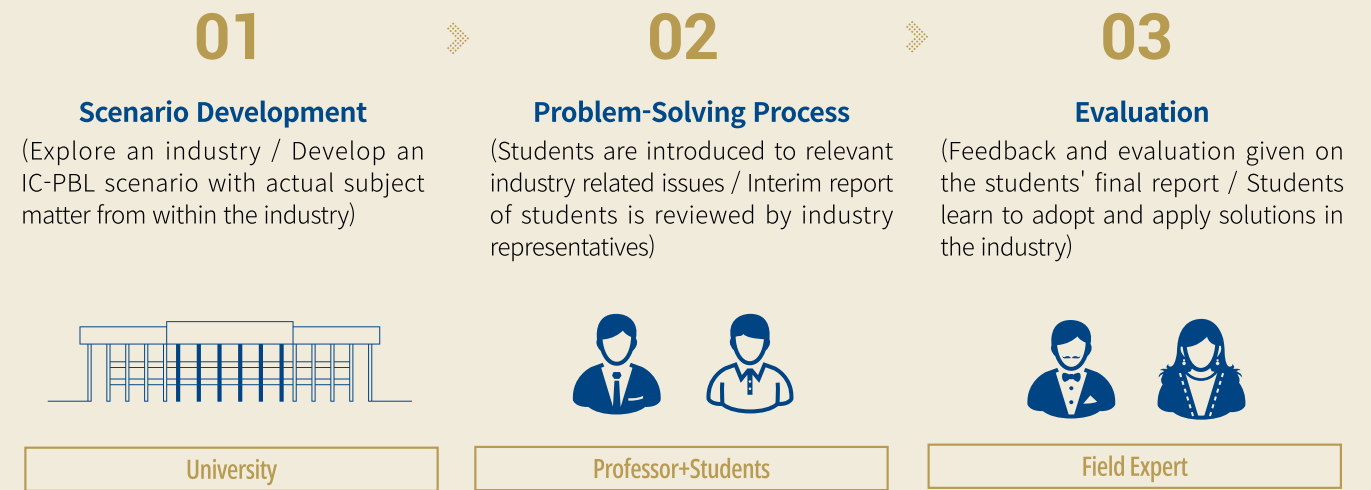
[Dormitories](#) – Page 20

Innovative Education Model : ERICA IC-PBL

What is IC-PBL? (Industry-Coupled Problem-Based Learning)

A learner-centered educational model at ERICA in which learners solve context-rich problems occurring in real-life fields, coupled with industry, society, and university • Students learn debating skills, creativity, and problem solving skills by themselves as the subject of the class.

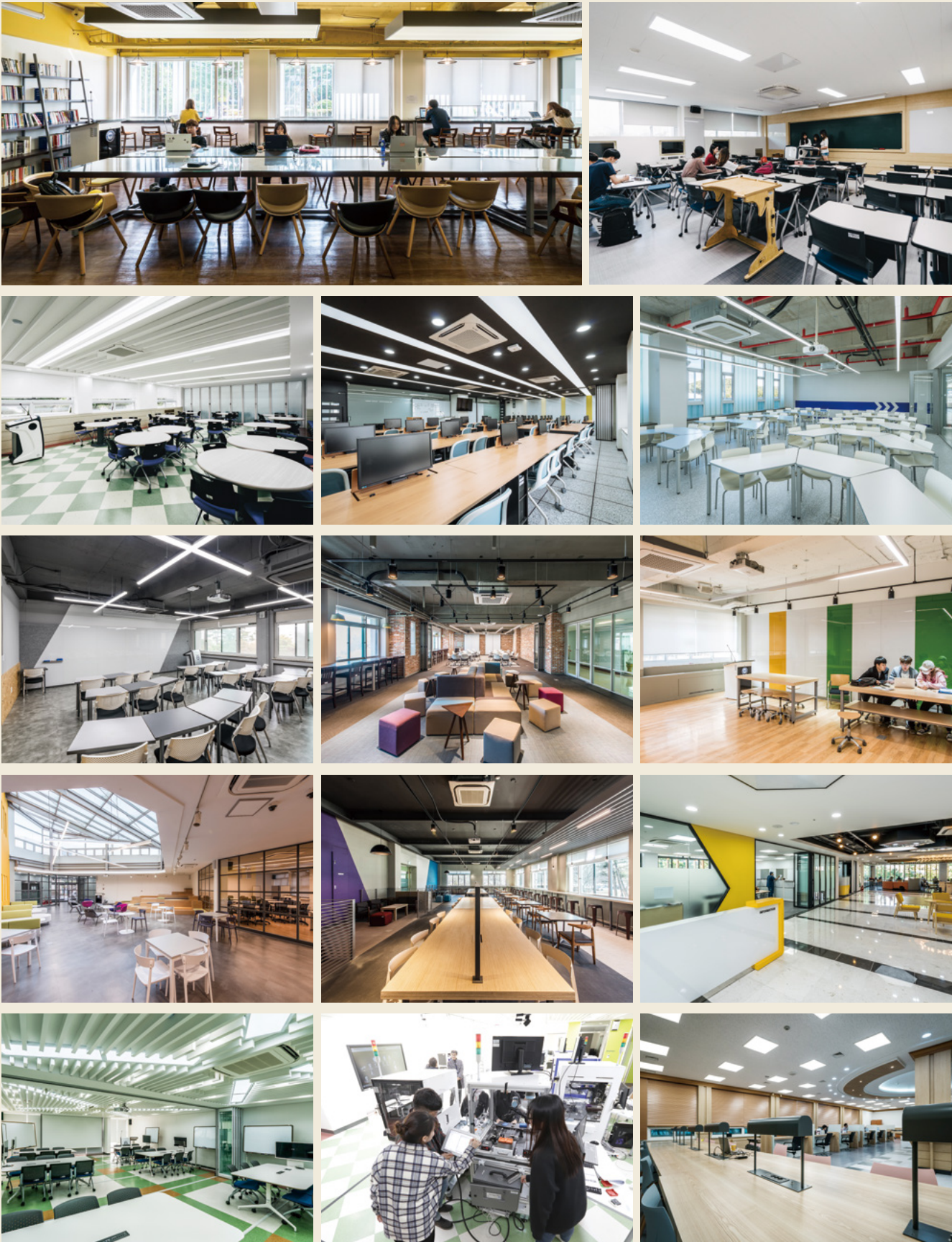
Process of IC-PBL



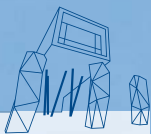
Industry-Academic Cooperation Cases of IC-PBL



- icpbl-eng.hanyang.ac.kr (English)
- icpbl.hanyang.ac.kr (Korean)
- icpbl-chn.hanyang.ac.kr (Chinese)



Graduate School



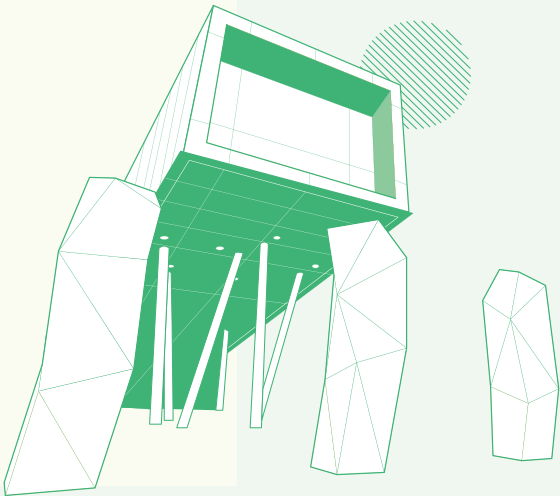
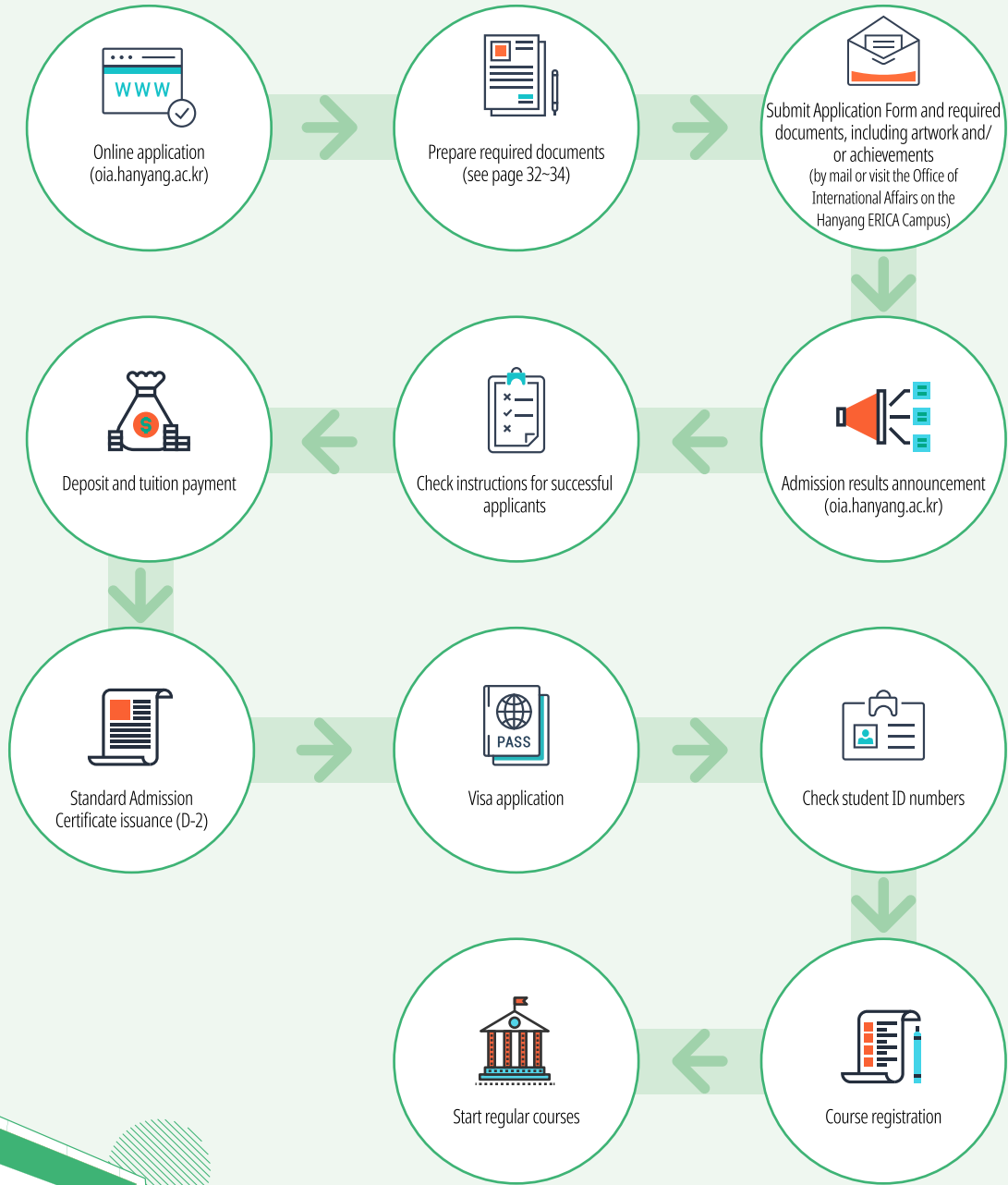
CONTENTS

● Application Procedure	26
● Admission Notice for Spring 2023 Intake(September)	27
1. Admission Unit	28
2. Application Schedule	30
3. Eligibility	31
4. Admission Inquiries	31
5. Required Documents	32
6. Screening Process	35
7. Korean Language Proficiency Standards	36
8. Scholarships for International Students	37
9. Graduation Requirements	38
10. Tuition Fee	39
11. Information on Document Verification	40
12. Dormitories	42



Application Procedure

Graduate School



Admission Notice
for 2023 Spring
Intake(March)

1. Seoul or ERICA campus applicants must make application through Seoul Campus Office of International Affairs

(No separate application between campuses, no dual application, same as before)

2. Notice on Online Korean Language Test

- Information on the online Korean language test will be informed later depending on the COVID-19 situation.
- ※ The conditional admission policy will remain in effect (TOPIK non-holders are still eligible for the application).

3. Notes for Final Academic Certificate Submission

- Applicants are required to provide their final academic certificate following <05. Required Documents> by the submission deadline.
- Admitted students who were unable to provide the verified final degree certificate following <05. Required Documents> must submit it to the OIA in person or by post during the tuition payment period. Otherwise, the issuance of Certificate of Admission will be restricted in accordance with Ministry of Justice regulations.
- ※ Refer to <05. Required Document> for more details.



Admission Unit
(General · Specialized Graduate School)

Graduate School

Please make sure to check on the program and department before applying.
Some departments or major name are subject to change before semester begins.

General Graduate Program - Engineering · Natural Science · Pharmacy Field

College/ Division	Department	Major	Field in Tuition Fee Chart	Program			NOTE
				MA/ MS	Ph.D	MA - Ph.D	
Engineering Science	Transportation Engineering	-	Engineering	<input type="radio"/>	<input type="radio"/>	<input type="radio"/>	Submit Artwork (mandatory)
	Architectural Design	-		<input type="radio"/>	<input type="radio"/>	<input type="radio"/>	
	Architectural System Engineering	-		<input type="radio"/>	<input type="radio"/>	<input type="radio"/>	
	Computer Science and Engineering	-		<input type="radio"/>	<input type="radio"/>	<input type="radio"/>	
	Mechatronics Engineering	-		<input type="radio"/>	<input type="radio"/>	<input type="radio"/>	
	Bionanotechnology	Bioengineering		<input type="radio"/>	<input type="radio"/>	<input type="radio"/>	
	Bionanotechnology	Nanotechnology		<input type="radio"/>	<input type="radio"/>	<input type="radio"/>	
	Bionanotechnology	Bionanotechnology		<input type="radio"/>	<input type="radio"/>	<input type="radio"/>	
	Civil & Environmental System Engineering	-		<input type="radio"/>	<input type="radio"/>	<input type="radio"/>	
	Electronic Engineering	-		<input type="radio"/>	<input type="radio"/>	<input type="radio"/>	
	Materials Science and Chemical Engineering	-		<input type="radio"/>	<input type="radio"/>	<input type="radio"/>	
	Industrial Management Engineering	-		<input type="radio"/>	<input type="radio"/>	<input type="radio"/>	
	Mechanical Design Engineering	-		<input type="radio"/>	<input type="radio"/>	<input type="radio"/>	
Computing	Human- Computer Interaction	-	Engineering	<input type="radio"/>	<input type="radio"/>	<input type="radio"/>	Ph.D applicants must submit a summary of Master thesis
	Applied Artificial Intelligence	-		<input type="radio"/>	<input type="radio"/>	<input type="radio"/>	
Science and Convergence Technology	Applied Physics	-	Natural Science	<input type="radio"/>	<input type="radio"/>	<input type="radio"/>	
	Applied Mathematics	-		<input type="radio"/>	<input type="radio"/>	<input type="radio"/>	
	Molecular & Life Science	-		<input type="radio"/>	<input type="radio"/>	<input type="radio"/>	
	Applied Chemistry	-		<input type="radio"/>	<input type="radio"/>	<input type="radio"/>	
	Marine Sciences and Convergent Technology	-		<input type="radio"/>	<input type="radio"/>	<input type="radio"/>	
	Photonics and Nanoelectronics	-		<input type="radio"/>	<input type="radio"/>	<input type="radio"/>	
Pharmacy	Pharmacy	-	Pharmacy	<input type="radio"/>	<input type="radio"/>	<input type="radio"/>	

General Graduate Program – Humanities · Social Science Field

College/ Division	Department	Major	Field in Tuition Fee Chart	Program			NOTE
				MA/ MS	Ph.D	MA - Ph.D	
Business and Economics	Strategic Management	Marketing	Humanities/ Social Science	<input type="radio"/>	<input type="radio"/>	<input type="radio"/>	
	Strategic Management	Human Resource Management		<input type="radio"/>	<input type="radio"/>	<input type="radio"/>	
	Strategic Management	Strategy		<input type="radio"/>	<input type="radio"/>	<input type="radio"/>	
	Strategic Management	Service and Operation Management		<input type="radio"/>	<input type="radio"/>	<input type="radio"/>	
	Management Consulting	Management Consulting		<input type="radio"/>	<input type="radio"/>	<input type="radio"/>	
	Applied Economics	-		<input type="radio"/>	<input type="radio"/>	X	
	Insurance & Finance	Insurance & Finance		<input type="radio"/>	<input type="radio"/>	<input type="radio"/>	
	Insurance & Finance	Banking & Finance		<input type="radio"/>	<input type="radio"/>	X	
	Insurance & Finance	Accounting		<input type="radio"/>	<input type="radio"/>	<input type="radio"/>	
	Cultural Anthropology	-		<input type="radio"/>	<input type="radio"/>	<input type="radio"/>	
Languages and Cultures	Japanese Language and Culture	-	Humanities/ Social Science	<input type="radio"/>	<input type="radio"/>	<input type="radio"/>	
	Chinese Commerce & Area Studies	-		<input type="radio"/>	<input type="radio"/>	<input type="radio"/>	
Communication & Social Science	Advertising & Public Relations	-	Humanities/ Social Science	<input type="radio"/>	<input type="radio"/>	<input type="radio"/>	
	Media Informatics	-		<input type="radio"/>	<input type="radio"/>	<input type="radio"/>	

Admission Unit
(ERICA Campus: General · Specialized
Graduate School)

General Graduate Program – Fine Arts · Music · Physical Education Field

College/ Division	Department	Major	Field in Tuition Fee Chart	Program			NOTE
				MA/ MS	Ph.D	MA - Ph.D	
Design	Design	Jewelry & Fashion Design	Fine Arts	<input type="radio"/>	<input type="radio"/>	<input type="radio"/>	Submit Artwork (mandatory)
	Design	Industrial Design		<input type="radio"/>	<input type="radio"/>	<input type="radio"/>	
	Design	Graphic Design		<input type="radio"/>	<input type="radio"/>	<input type="radio"/>	
	Design	Interactive & Multimedia Design		<input type="radio"/>	<input type="radio"/>	<input type="radio"/>	
Sports and Arts	Sport Science	-	Physical Education	<input type="radio"/>	<input type="radio"/>	X	
	Performing Arts	-	Fine Arts	<input type="radio"/>	<input type="radio"/>	X	
	Applied Music	-	Music	<input type="radio"/>	X	X	Submit Artwork (mandatory)

Specialized Graduate Program

College/ Division	Department	Major	Field in Tuition Fee Chart	Program			NOTE
				MA/ MS	Ph.D	MA - Ph.D	
Industrial Convergence	(NIGHT) Business Administration	Business Administration	Industrial Convergence- Humanities/ Social Sciences	<input type="radio"/>	X	X	
	(NIGHT) Culture Contents	-		<input type="radio"/>	X	X	
	(NIGHT) Art Therapy	-		<input type="radio"/>	X	X	
	(NIGHT) Performing Arts Management	Performing Arts Management		<input type="radio"/>	X	X	Submit Portfolio (mandatory)
	(NIGHT) Sports Business	-		<input type="radio"/>	X	X	
	(NIGHT) Oriental Culture	-		<input type="radio"/>	X	X	
	(NIGHT) Digital Design	-	Industrial Convergence- Natural Science	<input type="radio"/>	X	X	Submit Artwork (mandatory)

Interdisciplinary Graduate Program

College/ Division	Department	Major	Field in Tuition Fee Chart	Program			NOTE
				MA/ MS	Ph.D	MA - Ph.D	
Engineering Science	Smart City Engineering	-	Engineering	<input type="radio"/>	<input type="radio"/>	<input type="radio"/>	
	Interdisciplinary Robot Engineering System	-		<input type="radio"/>	<input type="radio"/>	<input type="radio"/>	
Languages and Cultures	Culture Contents	-	Humanities/ Social Science	<input type="radio"/>	<input type="radio"/>	X	
	Genre Technology and Subculture	-		<input type="radio"/>	<input type="radio"/>	<input type="radio"/>	

Application Schedule

Graduate School

Admission Process	Schedule		Note
	2023 Spring Semester (March)	2023 Fall Semester (September)	
Guideline Announcement	August 1, 2022	February 1, 2023	Downloadable from the OIA website (http://oia.hanyang.ac.kr)
Online Application	September 1 (10:00) ~ October 7 (17:00), 2022	March 2 (10:00) ~ April 5 (17:00), 2023	Check the notice before the online application (http://oia.hanyang.ac.kr) - Refer to <05. Requirements> (35p) - Submit by post or visit to below address
Required Documents Submission	September 1 (10:00) ~ October 12 (17:00), 2022	March 2 (10:00) ~ April 5 (17:00), 2023	[Address] Office of International Affairs, Room 218, International Building, Hanyang University, 222 Wangsimni-ro, Seongdong-gu, Seoul (04763), Republic of Korea
Result Announcement	December 14, 2022	June 16, 2023	Available only on OIA website (http://oia.hanyang.ac.kr > Admissions > Regular Admission Result)
Tuition Payment	January 2023 (tentative)	July 2023 (tentative)	- Refer to the 'Guidelines for newly accepted candidates' after the result announcement - Must make the payment to an individually assigned virtual account
Course Registration Orientation	To be informed by each department office	To be informed by each department office	Time and venue will be announced
Freshmen Orientation	February 24, 2023 (tentative)	August 25, 2023 (tentative)	
Semester Begins	March 2, 2023	September 1, 2023	

※ The dates are subject to change due to the COVID-19 situation and all admission notifications will be posted on the OIA website (<http://oia.hanyang.ac.kr> > Admissions > Notice).

※ All dates and times are based on Korea Standard Time (KST).

※ Applicants must submit all required documents by the deadline. Those who do not comply may be disadvantaged.

※ Applicants are not allowed to change your application information once you have completed it, so please make sure to fill out the application form correctly before submitting it. The university is not responsible for any result caused by missing or false information written in the application.

- Be careful not to make any mistake when you enter your name (both in Korean and English), date of birth (YY/MM/DD), passport number, ARC number, type of Visa, contact number, address, and e-mail address.

Eligibility

Type	Eligibility
[A] Applicants with foreign nationality whose parents both have foreign nationality	1. Applicants with foreign nationality whose parents both have foreign nationality - As of the application date, students and their parents should acquire foreign nationality - If the students and their parents have dual citizenship, they both should lose their Korean nationality before the application date 2. Academic background: Bachelor's degree required for Master's program admission / Both Bachelor's and Master's degree required for Doctoral Program admission 3. Note: The application only allows for those whose degree be conferred before the date of semester starts (February 28, 2023). ※ If the applicants get accepted with a status of expected graduation and fail to present their degree certificate by the deadline, their offer of admission will be rejected.
[B] Applicants including Koreans residing overseas who have completed the entire elementary, middle, high school and undergraduate education outside Korea	1. Applicants including Koreans residing overseas who have completed the entire elementary, middle, high school and undergraduate education outside Korea 2. Academic background: Bachelor's degree required for Master's program admission / Both Bachelor's and Master's degree required for Doctoral Program admission 3. Note: The application only allows for those whose degree be conferred before the date of semester starts (February 28, 2023). ※ If the applicants get accepted with a status of expected graduation and fail to present their degree certificate by the deadline, their offer of admission will be rejected.

● Notice for Eligibility

※ An applicant who wants to apply for the admission for international students must satisfy at least one of requirements above. An applicant who satisfies all of them is regarded as the eligibility [A].

※ If applicants submit forged documents in regards to the eligibility requirements, the admission will be revoked, even if they have already been accepted.

※ If additional documents are required during the document screening process, the OIA may request them. Applicants will be held liable for any consequences resulting from providing incorrect contact information or failing to respond to the OIA on time.

※ Admission will be revoked if applicants fail to provide the degree certificate.

[Notice for nationality]

a. If an applicant or his/her parents have dual nationality with Korean citizenship, he/she is not considered as an international student and cannot apply for the [A] type. Also, if it's found after he/she is accepted, the admission will be canceled.

b. If an applicant's family relationship needs to be confirmed (parents' divorce, remarriage, single parent, death, missing and etc.), he/she must submit authenticating documents as evidence.

ex) certificate of divorce, certificate of family relationship, certificate of single parent, certificate of death, certificate regarding missing person, confirmation of obtaining Korean citizenship etc.

※ When an applicant's single parent, who has legal custody of the applicant and is a foreign national, remarries a Korean national, the applicant must submit the Korean spouse's family relationship certificate.

※ (only for Chinese nationals) Death certificates can be substituted with one of the following documentation.

㉠ Original Notarized Cancellation of Registration Certificate

㉢ Original Notarized Family Certificate verifies the death

c. Acceptable period regarding the change of family relationship

- Graduate School: Those whose parents divorced or those who was adopted before the application period are acceptable.

Admission Inquiries

Office	Email	Website	Phone	Fax
Office of International Affairs (Admission)	admingrad@hanyang.ac.kr	oia.hanyang.ac.kr	82-2-2220-2445~2448	82-2-2220-1798
	Office of International Affairs, Room 218, International Building, Hanyang University 222 Wangsimni-ro, Seongdong-gu, Seoul (04763), Republic of Korea			

Required Documents

Graduate School

● Instructions for Document Submission

- ❶ All required documents must be kept ready and submitted before the submission deadline.
 - ※ If unable to present the original hard copy of apostille or consular confirmed documents within the application deadline due to an unexpected situation arises, please first submit notarized copy, then prepare and re-submit with confirmed hard copies before November 29, 2022.
 - ※ Applicants shall be responsible for any consequences caused by not following the above.
- ❷ All documents must be submitted to the OJA either by post or in person.
- ❸ Every document should be in A4 format and submitted in the order specified in the document submission list.
- ❹ Documents that are not written in Korean or English must be accompanied by notarized translations into either language.
- ❺ To legalize academic degree certificates, please request certificate to relevant organization. (refer to Appendix 2)
- ❻ If the contents of the documents differ following the academic background check, admission may be revoked even after enrollment.
- ❼ It is the applicant's responsibility to ensure that all required application materials are submitted.
- ❽ Other supporting documents (such as a certificate of achievement or a license) must be notarized in Korean (or English).
- ❾ ALL submitted documents including supporting materials will NOT be returned to the applicants. We advise applicants to prepare additional documentation for visa applications.
- ❿ The valid date for the notarized documents are 12 months (issued after September 1st, 2021 only valid). There's no expiration date for a consular confirmed or apostille documentation.

List of Required Documents

No.	Required Documents	MA/MS	Ph.D	Combined (MA-Ph.D)	Details																																			
1	Copy of the Application Form	○	○	○	Apply and pay the application fee online. The application form must be printed. (credit card/account transfer/Paypal/Alipay: 137,000 KRW) ※ Those who make the payment through Paypal or Alipay should pay extra transaction fee.																																			
2	Applicant Declaration	○	○	○	Automatically printed when printing out the online application form																																			
3	Personal Statement and Study Plan	○	○	○	Must be written online and printed out. ※ English or Korean (Must include a translated copy if written in other languages than English or Korean)																																			
4	Bachelor's Degree Certificate or Official Certificate of Expected Graduation	○	△	○	[Submission Standard of Final Degree Certificates] MA or Combined Program Applicants – submit Bachelor's degree related documents following below standards Ph.D. Program Applicants – submit Master's degree related documents following below standards (Bachelor's degree related documents can be substituted with photocopies for reference only.) <table><tr><th colspan="2">Certificate</th><th>Location of Univ.</th><th>Korea</th><th>China</th><th>Other countries</th></tr><tr><td rowspan="3">Graduated</td><td>CHSI cetificate(Chinese)</td><td></td><td>N/A</td><td>Printed Copy</td><td>N/A</td></tr><tr><td>Degree Certificate</td><td></td><td></td><td>Original Copy of Notarized Translation</td><td rowspan="2">Original Apostille or Consular Authentication</td></tr><tr><td>Official Transcript</td><td></td><td>Original</td><td>Original Consular Authentication or CHSI Full Academic Report</td></tr><tr><td rowspan="3">Expected to Graduate*</td><td>CHSI cetificate(Chinese)</td><td></td><td>N/A</td><td>Printed Copy</td><td>N/A</td></tr><tr><td>Certificate of Expected Graduation / Enrollment</td><td></td><td rowspan="2">Original</td><td>Original Copy of Notarized Translation</td><td rowspan="2">Original Apostille or Consular Authentication</td></tr><tr><td>Official Transcript</td><td></td><td>Original Consular Authentication or CHSI Full Academic Report</td></tr></table>	Certificate		Location of Univ.	Korea	China	Other countries	Graduated	CHSI cetificate(Chinese)		N/A	Printed Copy	N/A	Degree Certificate			Original Copy of Notarized Translation	Original Apostille or Consular Authentication	Official Transcript		Original	Original Consular Authentication or CHSI Full Academic Report	Expected to Graduate*	CHSI cetificate(Chinese)		N/A	Printed Copy	N/A	Certificate of Expected Graduation / Enrollment		Original	Original Copy of Notarized Translation	Original Apostille or Consular Authentication	Official Transcript		Original Consular Authentication or CHSI Full Academic Report
Certificate		Location of Univ.	Korea	China	Other countries																																			
Graduated	CHSI cetificate(Chinese)		N/A	Printed Copy	N/A																																			
	Degree Certificate			Original Copy of Notarized Translation	Original Apostille or Consular Authentication																																			
	Official Transcript		Original	Original Consular Authentication or CHSI Full Academic Report																																				
Expected to Graduate*	CHSI cetificate(Chinese)		N/A	Printed Copy	N/A																																			
	Certificate of Expected Graduation / Enrollment		Original	Original Copy of Notarized Translation	Original Apostille or Consular Authentication																																			
	Official Transcript			Original Consular Authentication or CHSI Full Academic Report																																				
5	Official Transcript of Bachelor's Degree (All semester) ※Expected graduates require to submit full transcripts except for the last semester.	○	△	○																																				
6	Master's Degree Certificate or Official Certificate of Expected Graduation	X	○	X	※ If 'Expected to Graduate' applicants get offer for acceptance, they must submit the supplementary documents before the semester starts(February 28, 2023) following to the "Graduated" standards as above-mentioned. If not, the issuance of 'Certificate of Admission' will be restricted and offer of admission will be rejected. ※ For those who have done transferred or dual degree program for Bachelor's degree, please refer to the below chart with named of <Required documents for those who transferred or under dual degree program>. ※ For the graduates from universities in Pakistan, please prepare authenticated documents by following a process of 'Photocopy ► HEC ► MOFA ► (Consular Confirmed)' or 'Original Document ► HEC ► MOFA ► Consular Confirmed ► Certified True Copy Consular Confirmed' ※ If there's only one original degree certificate, please certify a true copy attestation with photocopy of the apostilled or consular confirmed documents, and then submit the hard copy of those attested copies.																																			
7	Official Transcript Master's Degree (All semester) ※ Expected graduates require to submit full transcripts except for the last semester.	X	○	X																																				

O = Mandatory, △ = Optional, X = No need to submit

Required Documents

No.	Required Documents	MA/MS	Ph.D	Combined (MA-Ph.D)	Details														
8	(Optional) Certificate of GPA converted into 100 scale or percentage ※ if not submitted, will be exempted from HISP scholarship evaluation.	△	△	△	Submit one of the following documents: 1) An official document issued by the applicant's alma mater describing a grade point average (GPA) converted into 100 scale or percentage (English or Korean) 2) US WES ICAP (Course-by-Course Evaluation) certificate - WES basic or iGPA calculator is not acceptable 3) If full GPA has been calculated from Scholaro.com or wes.org etc., only valid once this document is attested by the graduated university(with school official stamp on). Apostille or notarization is not necessary. ※ If the transcript does not state your full marks and this document is not submitted, you will be exempted from HISP scholarship evaluation.														
9	Copies of Passports (applicants and both parents)	○	○	○	<table><tr><th></th><th>Chinese</th><th>Other Foreign Nationals except the Chinese</th></tr><tr><td>Copy of Applicant's Passport</td><td>Mandatory</td><td>Mandatory</td></tr><tr><td>Copy of Applicant's ID card</td><td>Mandatory</td><td>N/A</td></tr><tr><td>Copies of both Parents' Passports</td><td>Optional</td><td rowspan="2">Mandatory (either one of them)</td></tr><tr><td>Copies of both Parents' ID Cards</td><td>Mandatory</td></tr></table> ※ Passports and ID cards must be valid. ※ For other foreign nationals except the Chinese, if their submitting ID cards are in other than Korean or English must be accompanied by original notarized translation. ※ Non-passport holders can submit ID cards(except the driving license) that can prove nationality instead. ※ For applicants from Pakistan, a printed document of valid Nadra Family Registration Certificate (FRC) can be submitted in lieu of 1) Family Relation Certificate 2) Both Parents' Personal ID Cards, but the copy of applicant's passport must be accompanied with this document.		Chinese	Other Foreign Nationals except the Chinese	Copy of Applicant's Passport	Mandatory	Mandatory	Copy of Applicant's ID card	Mandatory	N/A	Copies of both Parents' Passports	Optional	Mandatory (either one of them)	Copies of both Parents' ID Cards	Mandatory
	Chinese	Other Foreign Nationals except the Chinese																	
Copy of Applicant's Passport	Mandatory	Mandatory																	
Copy of Applicant's ID card	Mandatory	N/A																	
Copies of both Parents' Passports	Optional	Mandatory (either one of them)																	
Copies of both Parents' ID Cards	Mandatory																		
10	Original Official Document proving the family relations between the applicant and his/her parents (Notarized Document : September 1 st , 2021)	○	○	○	<All Foreign Nationals except the Chinese> Submit one of the following : - Original Birth Certificate that both parents' names are stated - Original Family Relation Certificate (If the above documents are in other than Korean or English must be submitted with original notarized translation) <Chinese Applicants> Submit BOTH of the following documents : - Family Relation Certificate with notarized translation(Korean or English) - Copies of applicants and both parents family book(issued after Jan. 1st, 2017) (If the family book is issued before Jan. 1st, 2017, those documents must be notarized with translation(English or Korean) for submission.) [Reference] <table><tr><td>Mongolia: Kin relation verification, Nepal: Jeonmadalda, Philippines: Family Census, Indonesia: Family relation verification (KARTU KELUARGA), Bangladeshi: Jeommeo Kakus or Jeommeo Sidetiket, Vietnam: So ho Khau or Giay Khai ainh, Pakistan: Nadra Family Registration Certificate(FRC), Sri Lanka: Pauler certificate, Myanmar: Yingtausausayen, Kyrgyzstan · Kazakhstan · Uzbekistan · Ukraine · Thailand: Birth certificate</td></tr></table> ※ If the family relation certificate does not verify relationship between applicants and both parents because of their divorce or death, an additional certificate of divorce or death must be submitted with notarized translation in Korean or English.	Mongolia: Kin relation verification, Nepal: Jeonmadalda, Philippines: Family Census, Indonesia: Family relation verification (KARTU KELUARGA), Bangladeshi: Jeommeo Kakus or Jeommeo Sidetiket, Vietnam: So ho Khau or Giay Khai ainh, Pakistan: Nadra Family Registration Certificate(FRC), Sri Lanka: Pauler certificate, Myanmar: Yingtausausayen, Kyrgyzstan · Kazakhstan · Uzbekistan · Ukraine · Thailand: Birth certificate													
Mongolia: Kin relation verification, Nepal: Jeonmadalda, Philippines: Family Census, Indonesia: Family relation verification (KARTU KELUARGA), Bangladeshi: Jeommeo Kakus or Jeommeo Sidetiket, Vietnam: So ho Khau or Giay Khai ainh, Pakistan: Nadra Family Registration Certificate(FRC), Sri Lanka: Pauler certificate, Myanmar: Yingtausausayen, Kyrgyzstan · Kazakhstan · Uzbekistan · Ukraine · Thailand: Birth certificate																			
11	Original Bank Balance Certificate of USD 20,000 or higher	○	○	○	- Certificate of bank balance must be submitted (either copy of bankbook or certificate of employment is not acceptable) - Other currency which is equivalent to USD 20,000 is acceptable (e.g. RMB140,000, KRW 24,000,000 etc.) - Validity Period Standards(fulfill one of the following ① or ②) ※ For Chinese bank issued documents should fulfill both ① and ②. ① Issue date : after August 1, 2022 ② Frozen date : till March 2, 2023 ※ Those currently living in Korea with ARC cards must submit a bank balance certificate issued not only by a Korean bank but also by the applicant's own name as an account holder. - If you receive a scholarship from other institutes, you can submit an official scholarship certificate instead.														
12	Demonstration of Korean Proficiency (TOPIK test scores, HYU IIE's certificate of completion, Exemption Letter)	Optional			- TOPIK test validity : expiration date should be after the first day of the online application - More details are stated on <07. Korean Language Proficiency Standard> regarding the exemption.														

O = Mandatory, △ = Optional, X = No need to submit

Required Documents

Graduate School

No.	Required Documents	MA/MS	Ph.D	Combined (MA-Ph.D)	Details
13	Certificate of English Proficiency Test (TOEFL iBT, PBT, CBT or IELTS)	Optional			- Some departments may require a certificate of English proficiency test as mandatory, please refer to NOTE from <01. Admission Unit>. - Applicants except for the above departments are optional to submit. - Test score validity : expiration date should be after the first day of the online application
14	Artwork and Statement of Verification for Artwork	Only for those who apply to the specific department that require artwork			- Noted to check the NOTE for applying departments from <01. Admission Unit> - Statement of verification for artwork will be automatically printed when printing out the online application form (Only for applicants who submit artwork) [How NOTE is written] - Submit Artwork (Mandatory) : Must submit required artwork (Refer to <06. Screening Process>) - Submit Artwork (Optional) : Submit artwork free of choice (Free-form)
15	Certificate of Hanyang Alumni	Optional			Certificate of (expected) graduation issued by Hanyang University - Only holders - Those who don't submit this document cannot receive Hanyang Alumni Scholarship
16	Proof of Renunciation of Nationality	Only for those who have renounced Korean citizenship			Proof of renunciation of Korean citizenship with authorized date and other information indicated (both applicants and his/her parents) - explanation for nationality renunciation and date must be written
17	Certificate of entry & exit	Only for the Koreans residing overseas who have completed the entire elementary, middle, high school and undergraduate education outside Korea			From date of birth to starting date of online application.
18	Graduation certificates and transcripts of elementary, middle and high school (only in English)				Submit with one of the below verification : 1) Apostille certification 2) Consular authentication 3) Confirmation from Overseas Koreans Education Information Service ※ Those who have studied at Korean schools overseas that are under the Ministry of Education of Korea are exempted from above verification.

※ Applicants who are applying through Type[B] (completed the entire elementary, middle, high school and undergraduate education outside Korea) are not necessary to submit the NO.9 and 10 documents from this list.

<Required Documents for those who have transferred or under dual degree program>

Program	Former University	Supporting Documents for Former University (Original Apostille or Consular Authentication)		Documents for Final Graduated University
Transfer	4-year College (Dropout)	Certificate of Enrollment or Dropping	Official Transcript	Refer to No. 4~7 from the chart <05. Required Documents>
	4-year College (Graduate)	Certificate of Graduation	Official Transcript	
	2,3-year College (Graduate)	Certificate of Graduation	Official Transcript	
Dual Degree	4-year College	Certificate of Degree	Official Transcript	

※ Exception for Former University Related Documents

- 1) University located in Korea : submit original documents without consular's confirmation or Apostile
- 2) University located in China : submit both CHSI certificate and CHSI academic transcript (or consular confirmed transcript)



Screening Process

Evaluation Type 1 : Document screening (All departments except for the departments in Type 2)

- ※ Most departments examine and review based on submitted documents.
- ※ Some department may conduct specialized interview if needed.

[Departments Required for Additional Documents]

College	Department(Major)	Degree	Mandatory / Optional	Requirements
Computing	Human-Computer Interaction	All	Mandatory	Summary of Master Thesis required for Ph.D Applicants

Evaluation Type 2 : Document screening + Artwork(Portfolio) screening

College	Department(Major)	Degree	Requirements
Industrial Convergence	(NIGHT) Digital Design	All	Portfolio
	(NIGHT) Performing Arts Management	All	
Engineering Science	Architectural Design	All	
Design	Design (All majors)	All	Portfolio(contains the following ①,② and submit in USB) ① Art work ② A video of you explaining about your submitted art work
Sports and Arts	Applied Arts	All	(1) Portfolio (A video or 2 songs of your performance or composition in USB) – File name should state the name of the musical instrument of your major (2) Self-introduction video (You should appear on the video and submit it in USB) – Minimum 3 minutes, must be in Korean language

*All : MS/MA, Ph.D, M.A-Ph.D combined



Satisfying Korean standards has no bearing on admissions results. Applicants who are accepted but fail the Korean Language Proficiency Test must take a leave of absence till the standard is satisfied, and then re-register to start degree courses.

Korean Proficiency Standards for Graduate Admission

Korean Standards(General)	Note
1. Applicants who have TOPIK level 4 or higher	-
2. Applicants who completed Korean Language institute of HYU IIE level 4 or higher	

※ If our online Korean test is decided to be held, the related notice will be informed accordingly.

● Notice

1. Applicants who are exempted from Korean Language Standard

- have <a letter requesting Korean Standard Exemption> from academic supervisor at Hanyang University
- *No need to submit as it’s reviewed and offered by the professors in the document screening process
- applying English Track major
- applying major of Russian Studies and Chinese Studies

2. Freshmen who should attend Korean Language Courses at ERICA IIE

- Freshmen of Graduate School of Design, Sports and Arts for ERICA campus

No.	Korean Language Proficiency	Note
①	· TOPIK Level 4 Holders · completed level 4 at Korean Language Institute of HYU IIE · Exemption Letter Holders	Mandatory to attend more than 200 hours of Korean Language courses at ERICA IIE · allowed to attend with degree courses for the first admitted semester so that the Leave of absence is not required · language course tuition will be fee charged and borne by students themselves
②	· TOPIK Level 5 or higher Holders · completed level 5 or higher at Korean Language Institute of HYU IIE	exempt from the above mandatory course

- If accepted candidates are under any one of the option ① , must attend Korean courses as mentioned in NOTE.
- Additional supporting documents can be submitted before the first semester begins, and can be exempt from the above course if the submitted documents are under one from option ②.
- For TOPIK Level 3 or lower holders are excluded from above ① , must take a leave of absence till meet our Korean proficiency standard and then re-register for starting the degree program.

3. Korean Government Scholarship Program (KGSP) students should follow the Korean Standards enacted by NIIED.



(Students are not allowed to receive a scholarship with other on-campus scholarships)

For newly admitted students

※ Only documents submitted during the official application period are eligible for consideration for the scholarship.

Scholarship	Application Period								
<div><div>● Hanyang International Scholarship Program (HISP) - Graduate</div><div>Among applicants those with excellent grades at their final university are selected based on overall scholastic achievement.</div><div>•Qualification: GPA from the previously attended institution must be 80 or higher when converted to a 100 scale</div><div>•Benefit:</div><table><tr><th>Type</th><th>Benefit</th></tr><tr><td>HISP 100%</td><td>100% reduction in tuition and admission fees</td></tr><tr><td>HISP 70%</td><td>70% reduction in tuition</td></tr><tr><td>HISP 50%</td><td>50% reduction in tuition</td></tr></table><div>•Scholarship period: Master 4 semesters / Ph.D 4 semesters / MA-Ph.D 6 semesters (excluding extended study period and research registration)</div><div>•Requirement: Scholarship recipients must achieve a minimum of 3.0 GPA each semester in order to retain their scholarship.</div><div>※ The number of grantees may differ every semester.</div><div>※ Those who don't submit Certificate of GPA converted into 100 scale or percentage will not be eligible for the HISP scholarship</div></div>	Type	Benefit	HISP 100%	100% reduction in tuition and admission fees	HISP 70%	70% reduction in tuition	HISP 50%	50% reduction in tuition	
Type	Benefit								
HISP 100%	100% reduction in tuition and admission fees								
HISP 70%	70% reduction in tuition								
HISP 50%	50% reduction in tuition								
<div><div>● Hanyang Scholarship for Excellence in Language Proficiency - Graduate</div><div>Hanyang Scholarship for Excellence in Language Proficiency is awarded to applicants who have passed the TOPIK level 5 or 6, or achieved a TOEFL IBT score of 90 or higher or IELTS score of 6.5 or higher.</div><div>(Only documents submitted during the official application period are acceptable.)</div><div>•Benefit: 30% reduction in tuition</div><div>•Scholarship period: The first semester only</div><div>※ TOEFL and IELTS score are not applicable to native speakers of English.</div></div>	Selected during the admission process (no need to apply)								
<div><div>● Hanyang Scholarship for Engineering and Science Students</div><div>Hanyang Scholarship for Engineering and Science Students is awarded to international students who gain admission to the graduate school of engineering and science. (It is not necessary for applicants to submit a letter of recommendation.)</div><div>•Benefit: 50% reduction in tuition and 50% reduction in admission fees</div><div>•Scholarship period: Master 4 semesters / Ph.D 4 semesters / MA-Ph.D 6 semesters (excluding extended study period and research registration)</div><div>•Requirement: Scholarship recipients must achieve a minimum of 3.0 GPA each semester in order to retain their scholarship.</div></div>									
<div><div>● GSIS (Seoul), Industrial Convergence (ERICA) scholarship for international students</div><div>This scholarship is awarded to international students who gain admission to the Graduate School of International Studies (Seoul) and Industrial Convergence (ERICA).</div><div>•Benefit:</div><div>- Graduate School of International Studies: 20% reduction in tuition</div><div>- Graduate School of Industrial Convergence: 30% reduction in tuition</div><div>•Scholarship period: Master 4 semesters / Ph.D 4 semesters (excluding extended study period and research registration)</div><div>•Requirement: Scholarship recipients must achieve a minimum of 3.0 GPA each semester in order to retain their scholarship.</div></div>									
<div><div>● DKKIM Korea Scholarship</div><div>Among applicants from developing country or ODA countries are selected based on overall scholastic achievement.</div><div>•Benefit: 100% reduction in tuition and admission fees</div><div>•Scholarship Period: Master 4 semesters / Ph.D 4 semesters / MA-Ph.D 6 semesters (excluding extended study period and research registration)</div><div>•Requirement: Scholarship recipients must achieve a minimum of 3.0 GPA each semester in order to retain this scholarship.</div></div>									
<div><div>● Hanyang Alumni Scholarship</div><div>Hanyang Alumni Scholarship is awarded to international students who graduated from Hanyang University degree program.</div><div>•Benefit: 50% reduction in tuition and 50% reduction in admission fee</div><div>•Scholarship period: Master 4 semesters / Ph.D 4 semesters / MA-Ph.D 6 semesters (excluding extended study period and research registration)</div><div>•Requirement: Scholarship recipients must achieve a minimum of 3.0 GPA each semester in order to retain this scholarship.</div><div>※ Those who don't submit Certificate of graduation from Hanyang University cannot be awarded Hanyang Alumni Scholarship.</div></div>	Need to enter your previous student ID number and submit requirement when applying								

※The offered scholarship may be canceled if the degree program is changed during the academic period(MA/MS→MA&Ph.D. combined OR MA&Ph.D. combined→MA/MS)

Scholarships for International Students
(Students are not allowed to receive a scholarship with other on-campus scholarships)

Graduate School

For registered students

Scholarship	Application Period											
<div><div>● Hanyang International Excellence Awards (HIEA) - Seoul & ERICA</div><div>HIEA is awarded to international students who have achieved notable academic progress at Hanyang University.</div><div>•Qualification: Students with valid TOPIK level certificate and Insurance who achieved a minimum GPA of 4.0 out of 4.5 in the previous semester</div><div>•Recipients are selected by documents screening. Recipients will receive 100%, 70%, 50% or 30% tuition reduction according to their evaluation results.</div><div>•Scholarship period: One semester</div><div>•Required Documents: to be announced at OIA website</div></div>	Apply during semester											
<div><div>● TOPIK Scholarship</div><div>•Application Requirements</div><div>① International students currently enrolled in a degree program at ERICA campus (under 3rd academic term)</div><div>② NOT eligible to apply : over 4th academic term, students on leave of absence, extended semester students, students who completed all requirements of graduation, Hanyang IIE students</div><div>③ Obtained TOPIK Level 4 or higher in the applied semester</div><div>•Application Criteria</div><div>① First-time</div><table><tr><th>Academic Term</th><th>TOPIK Level 4</th><th>TOPIK Level 5</th><th>TOPIK Level 6</th></tr><tr><td>1st ~ 2nd Term</td><td>KRW 500,000</td><td>KRW 750,000</td><td>KRW 1,000,000</td></tr><tr><td>3rd Term</td><td colspan="3">KRW 300,000</td></tr></table><div>※ You may apply with the higher score if you have managed to get TOPIK Level 4 or higher for more than twice in one semester.</div><div>② Second-time: KRW 300,000 (Maximum time of awarding this scholarship is twice and only awardable if the level got higher)</div><div>※ This scholarship can be awarded with other on-campus scholarship</div><div>•Application Process: Log in to HY-in Portal and apply</div><div>•Necessary Documents: Newly obtained report of TOPIK</div><div>•Application Period: At the end of each semester (June, December)</div><div>•Inquiry: Office of International Affairs on ERICA campus</div></div>		Academic Term	TOPIK Level 4	TOPIK Level 5	TOPIK Level 6	1st ~ 2nd Term	KRW 500,000	KRW 750,000	KRW 1,000,000	3rd Term	KRW 300,000	
Academic Term	TOPIK Level 4	TOPIK Level 5	TOPIK Level 6									
1st ~ 2nd Term	KRW 500,000	KRW 750,000	KRW 1,000,000									
3rd Term	KRW 300,000											

※ Scholarship information for registered students is subject to change based on changes in the school's scholarship regulations. Please check again after admission for more information.

Graduation Requirements

As graduation requirements and graduation credits are different by departments, please visit the department office for more detailed information.



Tuition Fee
(Fee for Fall 2022, and subject to change based on university policy)

General Graduate School

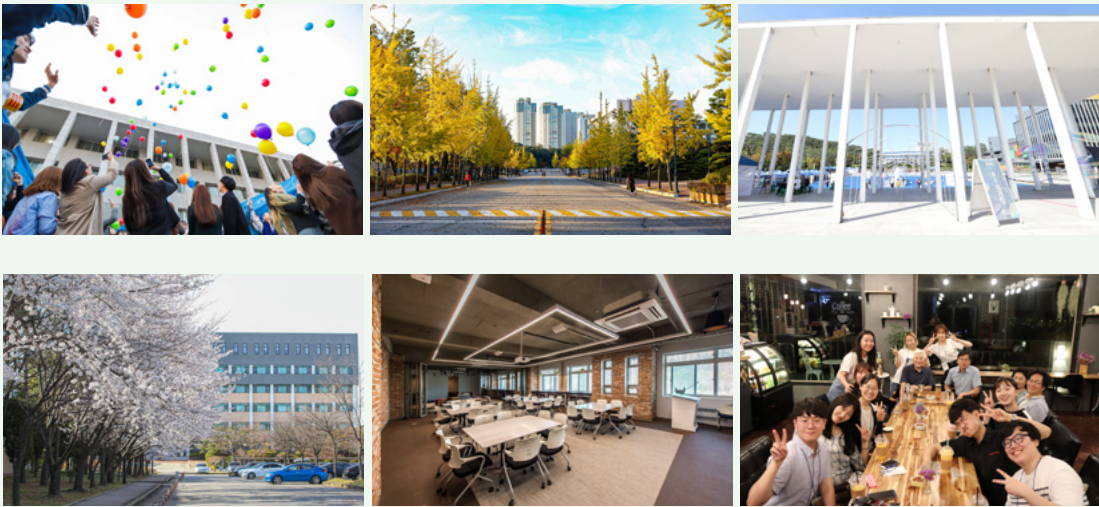
KRW(₩) / per semester

College/School	Tuition	Admission Fee	Department (Major)
Humanities- Social Science	5,972,000	1,030,000	Language and Culture, Communication & Social Science, Business and Economics, Interdisciplinary Courses (Culture Contents, Genre Technology and Subculture)
Natural Science- Physical Education	7,036,000	1,030,000	Science and Convergence Technology, Sports and Arts (Sport Science)
Engineering	7,996,000	1,030,000	Engineering Sciences, Computing, Interdisciplinary courses (Smart City Engineering, Interdisciplinary Robot Engineering Systems)
Fine Arts- Music	8,184,000	1,030,000	Design, Sports and Arts (Performing Arts, Applied Music)
Pharmacy	8,305,000	1,030,000	Pharmacy

Professional Graduate School/Specialized Graduate School

KRW(₩) / per semester

College/School	Tuition	Admission Fee	Department (Major)
Industrial Convergence (Humanities-Social Science)	5,784,000	1,030,000	Specialized Graduate School (Business Administration, Cultural Contents, Art Therapy, Sports Business Management, Oriental Studies, Performing Arts Management)
Industrial Convergence (Natural Science)	6,665,000		Specialized Graduate School (Digital Design, Innovation Engineering)



Apostille Certification and Consular Authentication

[1] Introduction for submitting a document to prove the academic history from overseas institutions

All applicants except those who have graduated in China must submit an official diploma or degree and an official academic transcript verified by one of the following verification method stated below during the designated period.

- 1) Apostilled Official diploma or degree and official academic transcript
- 2) Official diploma or degree and official academic transcript verified by a Korean Embassy

[2] Information on Apostille Convention

1. Apostille Convention

- 1) The Republic of Korea became the 90th Contracting State of the Apostille Convention (Convention Abolishing the Requirement of Legalization for Foreign Public Document), effective as of July 14, 2007
- 2) Apostille is a certificate specifying the modalities through which a document issued in one of the signatory countries can be certified for legal purposes in all the other signatory states
- 3) Apostille convention countries abolish the complex consular procedures to ensure the mutual authentication of public and official documents (Apostilled documents have the same effect as documents verified by diplomatic offices)

2. Apostille Convention is an international treaty drafted by the Hague Conference on Private International Law: You can check out detailed updated information regarding regional authorities at www.hcch.net

[3] The procedure of issuing Apostille



[4] Apostille Convention countries (Based on June 4, 2022)

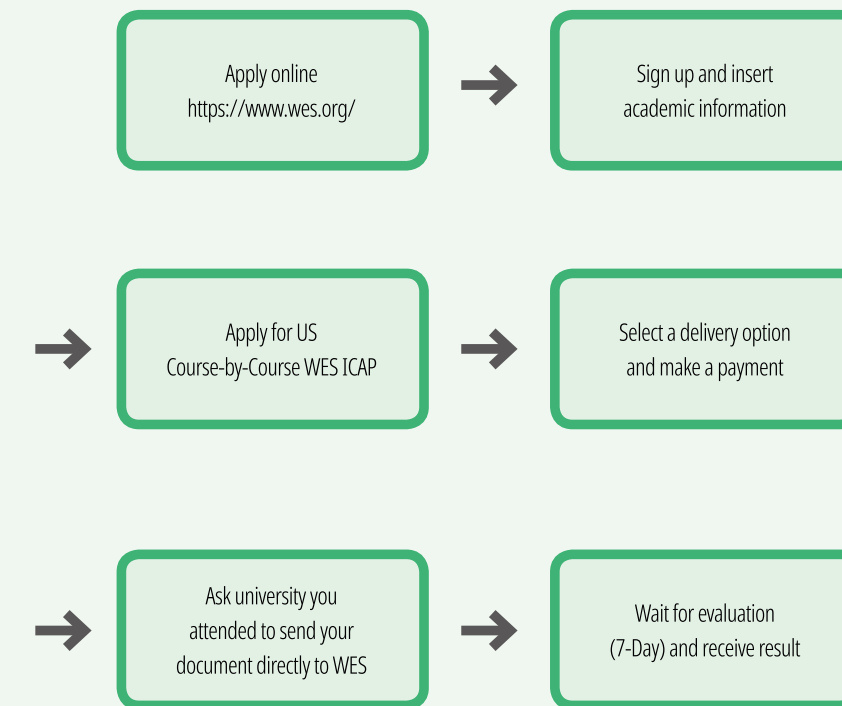
Area	Country/Region
Asia and Oceania	New Zealand, Niue, Marshall Islands, Mauritius, Mongolia, Vanuatu, Brunei, Samoa, Singapore, Australia (Australia), India, Indonesia, Japan, Macau, Hong Kong, Cook Islands, Tajikistan, Tonga, Palau, Fiji, Philippines, Korea
Europe	Greece, Netherlands, Norway, Denmark, Germany, Latvia, Russia, Romania, Luxembourg, Lithuania, Liechtenstein, North Macedonia, Monaco, Montenegro, Moldova, Malta, Belgium, Belarus, Bosnia and Herzegovina, Bulgaria, San Marino, Serbia, Sweden, Switzerland, Spain, Slovakia, Slovenia, Armenia, Iceland, Ireland, Azerbaijan, Andorra, Albania, Estonia, United Kingdom, Austria, Uzbekistan, Ukraine, Italy, Georgia, Czech Republic, Kazakhstan, Kosovo, Croatia, Kyrgyzstan, Cyprus, Turkey, Portugal, Poland, France, Finland, Hungary
North America	United States (including Guam, Maury Islands, Saipan, and Puerto Rico)
Latin America and the Caribbean	Guyana, Guatemala, Granada, Nicaragua, Dominican Republic, Dominican Federation, Mexico, Barbados, Bahamas, Venezuela, Belize, Bolivia, Brazil, Saint Lucia, Saint Vincent, Saint Kitts and Nevis, Suriname, Argentina, Antigua and Barbuda, Ecuador, El Salvador, Honduras, Uruguay, Chile, Costa Rica, Colombia, Trinidad and Tobago, Panama, Peru, Paraguay, Jamaica
Africa	Namibia, South Africa, Liberia, Lesotho, Malawi, Botswana, Sao Tome and Principe, Seychelles, Eswatini, Cape Verde, Burundi, Tunisia
Middle East	Morocco, Bahrain, Oman, Israel

WES ICAP (For Graduate School Applicants who want to submit GPA Certification)

[1] Information on WES

- Institution: WES (World Education Service)
- Web: <https://www.wes.org/>
- Address: Documentation Center P. O. Box 5087 Bowling Green Station, New York, NY 10274-5087, USA
- Contact: 1- 212-966-6311
- Cost: \$205.00 (Price does not include delivery or additional fees)

[2] The procedure of issuing WES ICAP



※ Please visit following website for detailed information.
(<https://www.wes.org/evaluations-and-fees/education/graduate-admissions/>)

Dormitories

Type	Name of dorm	Room type	Fee (6 months)	Note
On-campus	Injae #3	Room for 1	About 1,100,000 KRW ~ 2,600,000 KRW	One-room type
		Room for 2		Common facilities
	Changui hall	Room for 1		One-room type
		Room for 2		One-room type

Graduate School

Dormitory Administration Team contact info

Office : ERICA Residence Hall
 Website : <http://hydorm.hanyang.ac.kr/>
 Phone : +82-31-400-4374-9
 Address : Hanyang University ERICA Campus Residence Hall, 55 Hanyangdaehak-ro, Sangnok-gu, Ansan City, GyeongGi Province, 15588 South Korea

※ This Guideline is written in Korean and translated in other languages. The Korean guideline takes precedence over translated versions in cases of any conflict over the interpretation of this Guideline.

Campus photos



Main building



Lake garden



Guest house



Main entrance



Dormitory



Dorm room



Laundry room



Fitness room

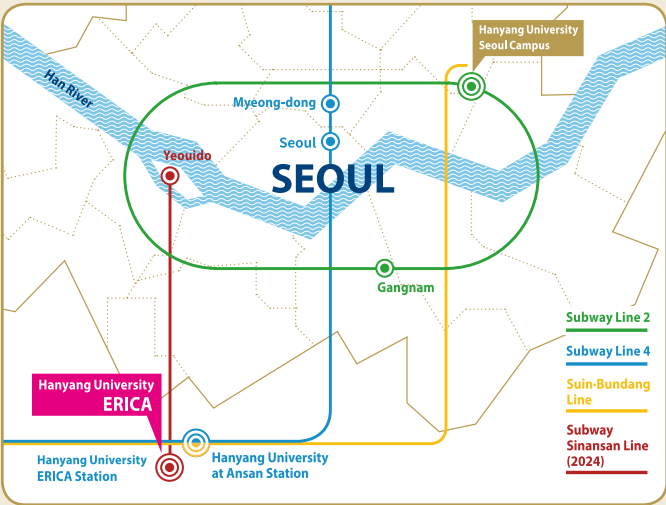


Muslim prayer room



Muslim kitchen

Location



HANYANG UNIVERSITY ERICA

| 55 Hanyangdaehak-ro, Sangnok-gu, Ansan, Gyeonggi-do, 15588, Korea

Website. studyerica.hanyang.ac.kr
 E-mail. studyerica@hanyang.ac.kr
 Tel. +82-31-400-4912~4920

- Hanyang University at Ansan Station (Subway Line No.4, Suin-Bundang Line)
- Hanyang University ERICA Station
Subway Route Sinansan Line is scheduled to open by 2024 (25 minutes from Yeouido to the ERICA)
- 30km away from Gangnam (40 minutes by bus or subway)
- 45km away from Myeongdong (60 minutes by bus or subway)



- 101 Administration Building
102 Student Welfare Building
103 Student Union
104 Engineering Building II
105 Architectural Design Hall
106 Structural Experiment Laboratory
107 Environment Experiment Center
108 Hydraulics Lab
109 Design Culture Hall
110 Design Education Hall
111 Design Research Hall
201 Business and Economics Hall
202 International Culture Building
203 R.O.T.C.

204 Communication and Social Sciences Hall
205 Sciences and Technology Building I
206 Conference Hall
207 Sciences and Technology Building II
208 Practical English Education Hall
209 Educational Building I
301 Engineering Building I
302 Facilities Management Building
303 Engineering Building III
304 Engineering Building IV
305 Engineering Building V
306 Bus Stop and Student Lounge (Shuttlecoke)

307 Convention Center
308 Hanyang Business Incubator
309 Pharmacy Building
310 Animal Experiment Laboratory
311 ERICA Support Center
312 ERICA Research Center
313 Hanyang Accelerated Pavement Testing Building
314 Applied Research Center for Electro-Fusion Technology(EFT Center)
315 BMR Center
316 Lion's Hall
401 Academic Information Center and Library
402 Gymnasium
403 ERICA Music Hall

404 Golf Training Course
405 Stadium
406 Tennis Courts
501 Student Residence Hall I
502 Student Residence Hall II
503 Student Residence Hall III
504 Residential College
C01 Gyeonggi Techno Park
C02 Korea Testing Laboratory
C03 KITECH
C04 Korea Electrotechnology Research Institute
C05 LG Innotek Ansan R & D Laboratory

Hanyang University ERICA English Track Programs

English track programs have been created in the **Department of Business Administration** and **Department of Economics** at the ERICA Campus. In these tracks, all courses are conducted in English.

Advantages of the ERICA English Track Programs



IC-PBL: A learner-centered educational model

Solve context-rich problems that occur in real-life, coupled with programs involving industry, society, and university.



AACSB accreditation

Less than 5% of all business schools in the world have gained the coveted the AACSB accreditation.



Global Experiences

Students can participate in various study abroad programs (dual-degree, exchange, etc.)



Mentoring

Special mentoring programs and cultural activities are available specifically for international students.



Career Development

Potential employment in agencies, public/private companies, financial institutions, academia, research institutes, start-ups, etc.



See page 21 to know more about the **ERICA English Track!**