



University of South Australia

2024
**INTERNATIONAL
STUDENT GUIDE**

YOUR JOURNEY STARTS HERE

PLANNING A BRIGHT FUTURE

RAJAT SHAH (INDIA)

Master of Urban and Regional Planning

Planning Officer at Wattle Range Council

With a strong background in architecture and a clear vision and understanding of South Australia's development policies and growing future, Rajat began his postgraduate studies at UniSA. Thanks to the University's history in partnering with local councils, Rajat began a placement at Wattle Range Council and, soon after, secured a Planning Officer position.

With a passion for urbanism, Rajat is focused on building a resilient future for generations to come. Working in a regional council, Rajat works on anything from development assessments to public park designs, local heritage surveys, public consultation and a 25-year Strategic Plan. With his awareness and strong sense of accountability, Rajat has quickly become a valued team member.

"I believe our towns and spaces are as profound as we allow them to be, and the majority of social issues can be solved by good planning. For me, planning is a forward-thinking process where I get to interact with the community and developers to achieve goals."

Welcome to the University of South Australia.

Join our globally connected and engaged university with industry-informed teaching and research that is inventive and adventurous.

Benefit from real-world experiences thanks to our practical approach to teaching and learning.

Get the knowledge, skills and confidence you need to graduate career ready.

TOP 2 IN AUSTRALIA FOR GRADUATE EMPLOYABILITY

Ranked #2, 2021 QILT Employer Satisfaction Survey – Graduate Employability Skills Indicator. Public universities.



ONE OF THE WORLD'S TOP YOUNG UNIVERSITIES

Ranked #29, 2021 QS Top 50 Universities Aged Under 50.
Ranked #46, 2022 THE Young University Rankings.



RANKED IN THE WORLD'S TOP 50 UNDER 50

Ranked #29,
2021 QS Top 50 Universities Aged Under 50.
Ranked #46,
2022 THE Young University Rankings.



TOP 5 IN AUSTRALIA FOR QUALITY EDUCATION

Ranked equal 5th,
2022 THE University Impact Rankings.



TOP 15 IN AUSTRALIA FOR STUDENT SUPPORT

Ranked #12, ComparED (QILT)
Student Experience Survey 2020-21
(Undergraduate). Public universities.



TOP 15 IN AUSTRALIA FOR TEACHING QUALITY

Ranked #13, ComparED (QILT)
Student Experience Survey 2020-21
(Undergraduate). Public universities.



#1 IN AUSTRALIA FOR RESEARCH IMPACT AND ENGAGEMENT

2018 ARC Engagement and Impact
Assessment (EI), Combined Impact –
Approach to Impact and Engagement on
Assessed Fields.



100% OF OUR ASSESSED RESEARCH RATED AT OR ABOVE WORLD-CLASS

2018 Excellence in Research for Australia
(ERA), 4-digit Fields of Research.



TOP 5 IN AUSTRALIA FOR PRODUCING GREATEST NUMBER OF CEOs

Ranked #4, Forbes List of Global
Companies – MBA News February, 2022



RATED FIVE STARS FOR EXCELLENCE IN RESEARCH, EMPLOYABILITY, TEACHING, FACILITIES, INTERNATIONALISATION, INCLUSIVENESS AND INNOVATION

2022 QS Stars Ratings



This image features MOD. - UniSA's futuristic museum of discovery. MOD. explores new ideas at the intersection of science, art, and innovation and presents two major seasonal exhibitions and workshops encouraging creativity and participation.



GRADUATE CAREER READY

TOP RANKING TEACHERS

Learn from our highly qualified academics and industry professionals. Our teaching staff are focused on providing you with the most current practices and global trends.

PRACTICAL LEARNING

You will learn in a practical environment with a focus on internships, placements, real-world projects, research, mentoring, industry and employer masterclasses as well as opportunities to volunteer and participate in community based programs.

POWERFUL PARTNERSHIPS

Our curriculum is influenced and codeveloped with industry. We connect with partners to create a culture of innovation and help you build your professional networks before you graduate.



**COLLABORATING WITH
2,500+ COMPANIES
WORLDWIDE**



CAREER SERVICES

Our Career Services team will help you prepare for your future career. You can connect with a career adviser for expert advice and be part of a comprehensive career development program, including networking opportunities, industry events and an Online Career Hub with the latest resources and job listings.

Career Services will help you develop your professional skills through a number of key areas:

- › Establishing your career pathway
- › Building your employability
- › Self-help career resources
- › Finding work
- › Events and workshops
- › Building a professional network
- › Career advice
- › Career news
- › Your future beyond graduation
- › Career development learning

unisa.edu.au/careers

BECOME A FUTURE LEADER

Shape your own journey with our unique leadership and self-development programs. By participating in the UniSA+ Award or ASPIRE Award, you'll develop the practical skills needed for the modern workplace, including leadership, entrepreneurship, cultural understanding, effective communication, self-awareness, and much more.

unisa.edu.au/studentleadership



TOP 20 IN AUSTRALIA FOR EMPLOYER SATISFACTION

Ranked #19, 2021 QILT Employer Satisfaction Survey – Overall Satisfaction Indicator.

WORK-READY PROFESSIONALS



TOP 10 IN AUSTRALIA FOR GRADUATE SKILLS

Ranked #7, ComparED (QILT) Student Experience Survey 2020-21, Skills Development Indicator (Undergraduate). Public universities.



JOIN OUR ALUMNI NETWORK

When you graduate you will become part of more than 230,000 alumni from around the world with formal networks in Hong Kong SAR, Singapore, Malaysia, Vietnam, Indonesia, and the United Kingdom.

📧 unisa.edu.au/alumni

FUTURE PROOFING A HEALTHY CAREER

BENEDICT OKONJO (NIGERIA)

Master of Health Services Management

Digital Health Lead at Adelaide PHN

Knowing he wanted to work in the hospitals of the future, Ben was looking for a degree which offered a combination of health management and technology studies. The Master of Health Services Management at UniSA provided that unique blend along with a strong focus on the demands of the healthcare industry.

Ben's studies helped him prepare for his future career as a Digital Health Lead at Adelaide PHN where he provides strategic leadership and oversight of a range of digital health initiatives and projects designed to improve population health outcomes and transform the Australian healthcare system.

"I feel like my current success can be largely attributed to what I've learnt throughout my degree. I learnt a lot about strategy, leadership, digital transformation, project management in health and the Australian healthcare system which I draw upon every day at work."



A SUSTAINABLE FUTURE WITH LEGO

THI QUANG LINH TRAN (VIETNAM)

Master of Engineering (Water Resources Management)

Sustainable Construction Manager at the LEGO Group

Vietnam is set to become home to LEGO's first ever carbon neutral factory. UniSA engineering graduate, Thi Quang Linh Tran, is one of the company's driving forces behind a more sustainable future. Linh is bringing her technical expertise and passion for environmental ethics to the project, thanks to the experience she gained during her studies.

Linh is also a staunch advocate for gender equity in STEM careers and continues to use her voice to inspire women in the industry and as a defender of sustainable engineering.

"My proudest achievement is the fact I have become a female engineer, especially a sustainable engineer. People tend to ignore or underestimate environmental impacts, particularly when faced with budget constraints, so I have to be brave to raise my voice to protect our ultimate sustainability goals."



FROM INDUSTRY ENGAGEMENT TO EMPLOYMENT

BUNHEANG CHHEAN (CAMBODIA)

Master of Professional Accounting

Audit Analyst at Deloitte

When Bunheang was researching postgraduate study options, he was inspired by UniSA's high rankings in business and strong career outcomes.

A highlight of Bunheang's studies was engaging in industry networking sessions and connecting classroom theory to working environments. He also had the chance to develop his skills through on campus work and volunteering opportunities.

"As an international student, on campus work provides a strong foundation for communication skills, networking and cultural adjustment, and these are all incredible values to get ready for a job after graduation. I was involved in various university activities before I landed my current professional job as an Audit Analyst at Deloitte. It is just the beginning! There is no end to exploration!"



SUPPORTING COMMUNITY WITH HEALTHY FUTURES

ELLA QINGPING LYU (CHINA)

Bachelor of Physiotherapy (Honours)

Physiotherapist at Core Physiotherapy and Pilates Studio

The opportunity to participate in a wide range of placements at UniSA, helped Ella decide which career pathway she wanted to take following graduation. She was also drawn to study in Adelaide, knowing physiotherapists were in high demand in South Australia.

Ella enjoys the opportunity to meet different people through her role and works with clients to help them feel better and achieve healthier futures.

"As a physiotherapist, I'm proud that I am able to help our community to achieve their personal health goals and help them to increase their quality of life as well."



FORBES HONOUR FOR BUSINESS STUDENT

AIZAT RAHIM (MALAYSIA)

Bachelor of Management (Marketing)*

Founder and Managing Director of Dropee

Named as a Forbes 30 Under 30, Aizat Rahim, is an entrepreneur based in Kuala Lumpur, leading a B2B marketplace that connects more than 170,000 retailers, suppliers, manufacturers and distributors to buy and sell in bulk.

Aizat has created Dropee – a platform where businesses can see their performance across the global supply chain network in real-time. Dropee was also the first e-commerce platform in the country to partner up with Malaysia's top financial institutions to enable investment and issue credit loans to retailers.

Aizat believes the real-world practicality and hands-on learning in his degree have served him well as Dropee continues to provide inspired, innovative solutions.

"The next goal for Dropee is to reach out to as many under served retailers as possible. These small businesses are what keeps us motivated to do what we do every single day."

*This degree is now known as a Bachelor of Business (Marketing)

YOUR STUDENT EXPERIENCE

CONNECT WITH OTHERS

- › USASA is your student association, organising social activities and coordinating student clubs.
- 📍 unisa.edu.au/USASA
- › With 100+ academic, cultural and social clubs, there is something for everyone! It is a great way to meet new friends and enjoy your university experience.
- 📍 unisasport.edu.au/clubs/search
- › Orientation is your chance to explore your campus, meet new people, connect with teaching staff and enjoy activities.
- 📍 unisa.edu.au/orientation



📍 unisa.edu.au/studentlife



GET ACTIVE

- › UniSA Sport has 25+ sporting clubs, including rowing, netball, gridiron, rock climbing and even esports!
- 📍 unisasport.edu.au
- › Health and Fitness Centres can be found across all campuses including a 25m heated swimming pool at Pridham Hall.



**GYM MEMBERSHIPS
AVAILABLE AT ALL
CAMPUSES**



FEEL SUPPORTED

- › Campus Central is ready to help you with everything from ID cards, to enrolment and student services.

SUPPORT SERVICES

- › Study support
- › Language assistance
- › Personal counselling
- › Disability and inclusion services
- › Health services
- › Online support
- › Accommodation assistance
- › Legal advice
- › Free peer study sessions
- › 24/7 security on campus

📍 unisa.edu.au/internationalstudents



**97% OF OUR
INTERNATIONAL STUDENTS
FEEL SUPPORTED WITH
THEIR STUDIES**

2021 i-Graduate Survey, International Student Barometer – Study Support Indicator (97.7%).



**CHOOSE FROM 50+
EVENTS EACH YEAR
ACROSS ALL CAMPUSES**

WORLD-CLASS FACILITIES

Pridham Hall is where our students gather to celebrate university life, milestones and achievements. It includes a large multi-purpose hall for graduations and sporting events, as well as a Fitness Centre and 25m heated swimming pool.



Jeffrey Smart Building is our award-winning student learning centre with a 5 Green Star Rating and over AUD\$8 million in new technologies. Students have access to more than 600 computers in both high-tech and silent study zones.

FROM THE CLASSROOM TO THE WORKPLACE

Study in modern, purpose-built facilities across all our campuses. Learn with the latest industry-standard tools and technologies that help you get career ready from day one.

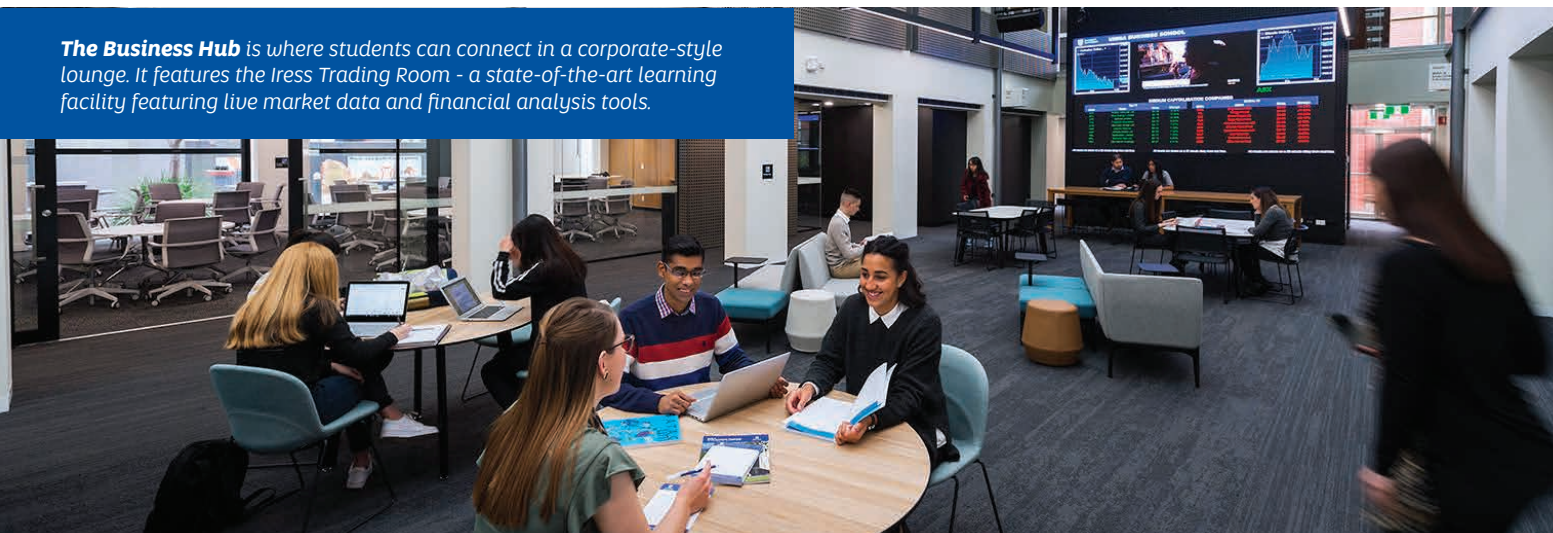
Benefit from our innovative laboratories, community clinics, creative studios, collaborative learning areas and simulation spaces.



SCAN THE QR CODE TO TAKE A VIRTUAL CAMPUS TOUR

unisa.edu.au/virtualcampustours

The Business Hub is where students can connect in a corporate-style lounge. It features the Iress Trading Room - a state-of-the-art learning facility featuring live market data and financial analysis tools.



The **Boeing 737 Next Generation flight simulator** is equipped with the latest technologies to simulate real flying conditions for aviation students.



Horizon Hospital and Health Service (HHHS) is a unique space modelled on real-world settings, providing nursing and midwifery students with vital experience in a clinician-led simulated health environment.



ARCHITECTURE, PLANNING AND DESIGN

Express yourself through creative practice and learn from professional architects, designers and researchers who are leaders in their field. Access a range of purpose-built spaces on campus, including practical design studios and workshops fitted with all the tools you need and the latest industry-standard technologies.

- › Architecture
- › Communication Design
- › Design and Marketing
- › Game Art
- › Illustration and Animation
- › Industrial Design
- › Interior Architecture
- › Product Design
- › Sustainable Design
- › Urban and Regional Planning



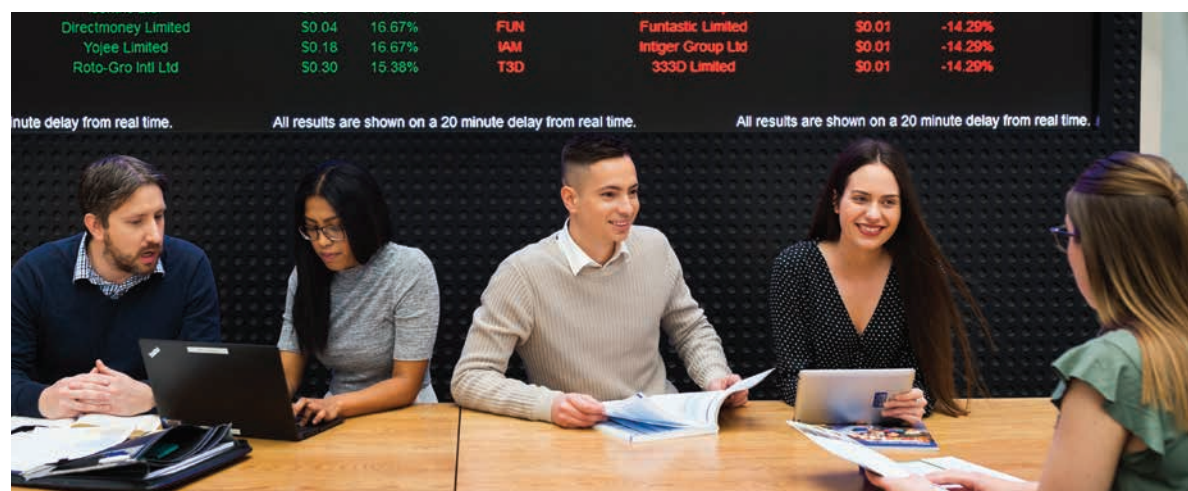
TOP 5 IN AUSTRALIA FOR GRADUATE SKILLS IN ARCHITECTURE

Ranked #4, ComparED (QILT) Student Experience Survey 2020-21, Architecture and Built Environment – Skills Development Indicator (Undergraduate). Public universities.

BUSINESS

Join one of Australia's premier universities for business, recognised nationally and internationally for its quality education, career outcomes and research. Graduate with the knowledge and skills to become a leader for change and growth, creating lasting impact in businesses and communities.

- › Accounting
- › Digital Business
- › Finance
- › Human Resource Management
- › Innovation and Entrepreneurship
- › International Business
- › Logistics and Supply Chain Management
- › Management
- › Marketing
- › Property
- › Real Estate Practice
- › Sport and Recreation
- › Tourism and Events



UNISA BUSINESS IS IN THE TOP 1% WORLDWIDE

UnISA Business is one of just 12 institutions in Australia and approximately 200 globally (from over 25,000 universities) to be EQUIS accredited. EFMD, March 2022.



UnISA Business is EFMD (EQUIS) and AACSB accredited.

EDUCATION AND TEACHING

Build a career as a teacher, ranging from childhood education through to adult learning, and help shape the minds of future generations. Gain practical teaching and learning experience through professional placements and access the latest in teaching technologies on campus.

- › Digital Learning
- › Early Childhood
- › Educational Leadership
- › Inclusive Education
- › Languages and Literacy
- › Primary
- › Secondary
- › TESOL

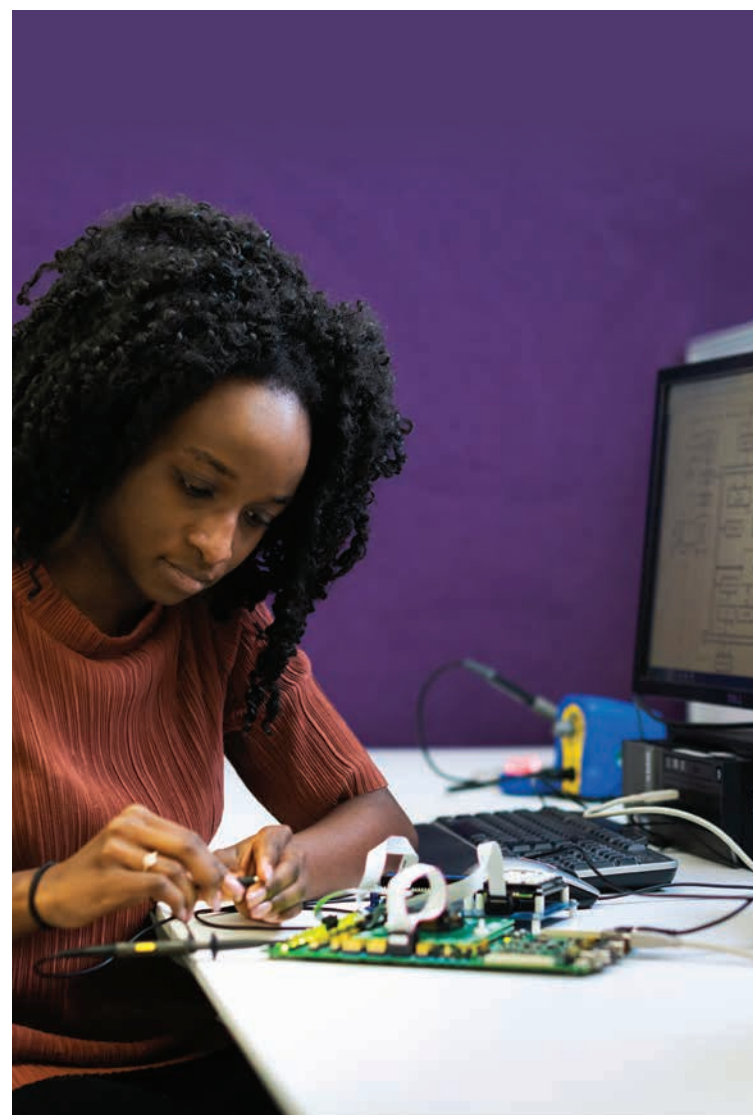
**WORLD TOP 100
IN EDUCATION**

2023 THE Subject Rankings.



**TOP 5 IN AUSTRALIA FOR
GRADUATE SKILLS IN ENGINEERING**

Ranked #4, ComparED (QILT) Student Experience Survey 2020-21, Skills Development Indicator (Postgraduate). Public universities.



ENGINEERING, CONSTRUCTION AND AVIATION

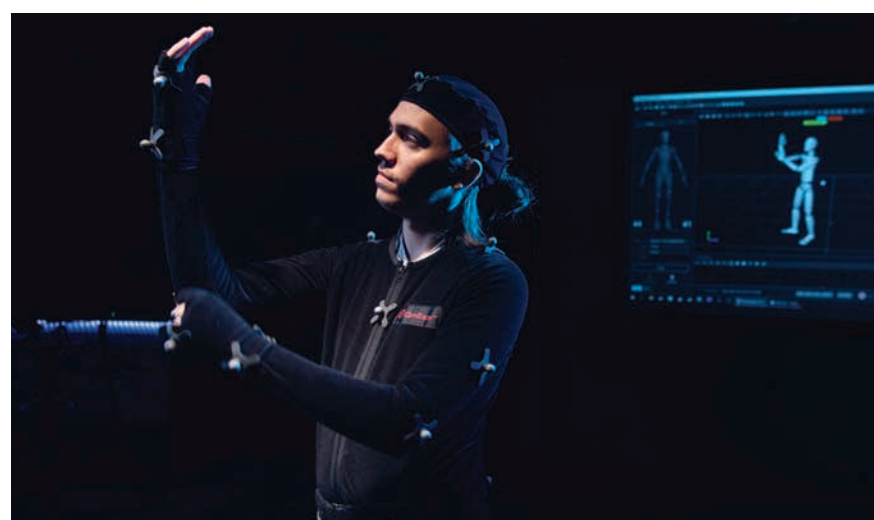
Turn ideas into action and prepare for a career in engineering, construction or aviation. Build strong foundations by studying construction management, develop smarter solutions by exploring diverse areas of engineering or explore airport operations and flight training through our aviation degrees.

- › Aviation
- › Construction Management
- › Engineering
 - › Advanced Manufacturing
 - › Civil
 - › Electrical
 - › Electronic
 - › Mechanical
 - › Mechatronic
 - › Structural

FILM, TV, VFX, CREATIVE AND COMMUNICATIONS

Express yourself through creative practice and learn from professionals and researchers who are leaders in their field. Access a range of purpose-built spaces on campus, including practical design studios and workshops fitted with all the tools you need and the latest industry-standard technologies.

- › Communication and Media
- › Creative Industries
- › Film and Television
- › Journalism and Writing
- › Visual Arts
- › Visual Effects (VFX)



#1 IN AUSTRALIA FOR ART AND DESIGN FACILITIES

ComparED (QILT) Student Experience Survey 2020-21, Creative Arts – Learning Resources Indicator (Postgraduate). Public universities.

INFORMATION TECHNOLOGY, SCIENCE AND MATHEMATICS

Build practical and theoretical knowledge across diverse fields and take advantage of cutting edge facilities fitted with the latest technologies and software. Prepare for your career by partnering with industry on real-world projects and create a better world through new discoveries.

- › Cyber Engineering
- › Data Science
- › Environmental Science
- › Industrial and Applied Mathematics
- › Information Management
- › Information Technology
- › Games Design
- › Mobile Apps
- › Networking and Cybersecurity
- › Software Development
- › Science
- › Software Engineering



TOP 5 IN AUSTRALIA FOR GRADUATE SKILLS IN I.T.

Ranked #3, ComparED (QILT) Student Experience Survey 2020-21, Computing and Information Systems – Skills Development Indicator (Undergraduate). Public universities.

LAW AND CRIMINAL JUSTICE

Study at a university recognised on a global scale for its education in law. Learn the art of reasoning, analysis, negotiation, advocacy, professional reporting and communication. Take advantage of practical learning opportunities in our moot court and public-facing Legal Advice Clinic.

TOP 15 IN AUSTRALIA FOR LAW

Ranked equal #15, 2022 QS Subject Rankings.



- › Criminal Justice
- › Law
- › Law double degrees paired with:
 - › Accounting
 - › Arts
 - › Economics
 - › Global Politics
 - › Human Resource Management
 - › Journalism
 - › Management
 - › Marketing
 - › Psychology
 - › Sport and Tourism



#1 IN AUSTRALIA FOR QUALITY EDUCATION IN HEALTH

ComparED (QILT) Student Experience Survey 2020-21, Health Services and Support – Overall Quality of Educational Experience Indicator (Postgraduate), Public universities.



NURSING, HEALTH AND MEDICAL SCIENCES

Play an important role in shaping the wellbeing of communities as a dynamic health professional. Benefit from interactive learning, highly experienced clinicians and teaching staff, and practical placement opportunities. Access purpose-built facilities on campus, including simulated hospital and health service environments.

- | | |
|--------------------------------|--|
| › Biomedical Science | › Nutrition and Food Sciences |
| › Clinical Exercise Physiology | › Occupational Therapy |
| › Exercise and Sport Science | › Outdoor and Environmental Leadership |
| › Health Services Management | › Pharmaceutical Science |
| › Human Movement | › Pharmacy |
| › Laboratory Medicine | › Physiotherapy |
| › Medical Radiation Science | › Podiatry |
| › Midwifery | › Public Health |
| › Nursing | › Speech Pathology |

PSYCHOLOGY, SOCIAL WORK AND HUMAN SERVICES

Pursue a career that helps empower individuals and creates more socially engaged communities. Explore the connections between the brain and behaviour, the meaning behind human interactions and the broader social sciences. Learn in purpose-built facilities on campus including our Social Work and Human Services studio.

- › Ageing and Disability
- › Arts
- › Cognitive Neuroscience
- › Counselling
- › Human Services
- › Psychology
- › Social Work



TOP 10 IN AUSTRALIA FOR GRADUATE SKILLS IN PSYCHOLOGY

Ranked #6, ComparED (QILT) Student Experience Survey 2020-21, Skills Development Indicator (Undergraduate). Public universities.

RESEARCH AT UNISA

Our research is inspired by challenges. We produce new knowledge that provides real solutions for industry, businesses and the wider community. Our researchers are thought leaders and change makers. We have big ideas and we ask big questions. We translate our discoveries into solutions that benefit our economy and society.

📍 unisa.edu.au/research

RESEARCH DEGREES

Completing a research degree means becoming an expert in your field. It is your opportunity to take a topic that interests you, explore it in depth, tackle intellectual, creative and practical challenges, and communicate your findings.

HOW TO APPLY

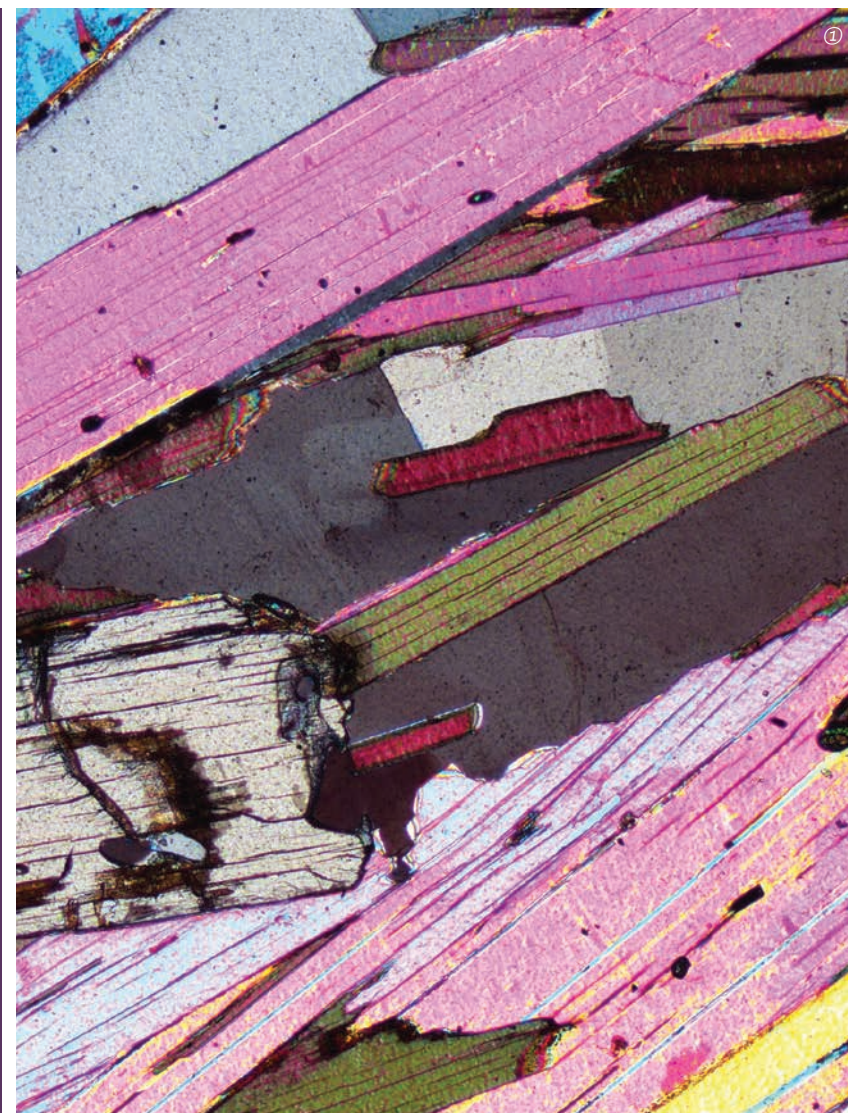
1. Check your eligibility
2. Find a research project
3. Organise referee reports
4. Prepare to apply
5. Apply online



📍 unisa.edu.au/research-degrees-apply

No.1 IN AUSTRALIA FOR RESEARCH IMPACT AND ENGAGEMENT

2018 ARC Engagement and Impact Assessment (E), Combined Impact – Approach to Impact and Engagement on Assessed Fields.



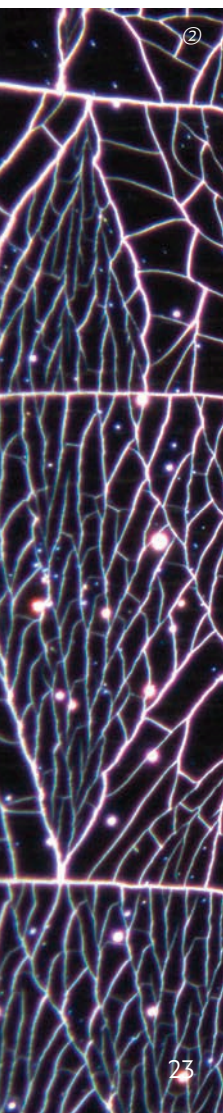
UNISA Enterprise Hub

The UniSA Enterprise Hub is home to our research portfolio, including our research degrees. It's an online gateway and physical shopfront in Adelaide's CBD, where industry can directly connect with our researchers, educators and students on activities that solve real problems, drive progress, and shape business and community growth in South Australia and beyond.

📍 unisa.edu.au/enterprisehub

① Images of Research 2018, A journey into Australia's tumultuous geological past, and into a groovy future, Jan Varga, PhD Candidate, School of Natural and Built Environments

② Images of Research 2019, The Cracked Surface, Bastian Stoehr





TRANSNATIONAL EDUCATION

Our long history of transnational education has been a central part of the University's internationalisation strategy since its inception. As a globally focused institution, our transnational education footprint stretches across the Asia Pacific. Building on the investment in digital learning we are reshaping our approach to one that is engineered for sustainability and diversity and offered through new modes of delivery and support.

UNISA VIETNAM

UniSA offers a range of degrees in business, digital media and information technology which students can study in two locations at partner institutions in Vietnam – Ho Chi Minh City and Hanoi. Students also have an option to start their degree in Vietnam and transfer to Adelaide to complete their studies.

transnational.unisa.edu.au/unisavietnam

HONG KONG BAPTIST UNIVERSITY (HKBU)

UniSA and HKBU's School of Continuing Education have been collaborating for more than 25 years to deliver UniSA degrees in Hong Kong. HKBU currently offers two business degrees specialising in sport and recreation management and tourism and event management.

sce.hkbu.edu.hk/en

HONG KONG MANAGEMENT ASSOCIATION (HKMA)

UniSA's partnership with HKMA offers students the chance to study UniSA's Master of Business Administration in Hong Kong. Also available at HKMA is the Graduate Certificate in Business Administration.

hkma.org.hk

AN DE COLLEGE

An De College is a joint collaboration between Xi'an University of Architecture and Technology (XAUAT) and UniSA, which is endorsed and approved by the Chinese Ministry of Education. Currently offering six degrees – four undergraduate and two postgraduate, the college gives students the option to start their degree in China and finish in Adelaide.

ande.xauat.edu.cn/english.htm

SCHOLARSHIPS

Each year more than 2,500 students benefit from our scholarships and grants, worth millions of dollars. We have a range of categories including support for high achievers and students in need, along with scholarships specifically for international students.

unisa.edu.au/scholarships

VICE CHANCELLOR'S INTERNATIONAL EXCELLENCE SCHOLARSHIP

Receive a 50% reduction in your student contributions (tuition fees) for the duration of your degree.

INTERNATIONAL MERIT SCHOLARSHIP

Receive a 15% reduction in your student contributions (tuition fees) for the duration of your degree.

For more scholarships and to view full scholarship conditions, please visit:

unisa.edu.au/international-scholarships

AUSTRALIA AWARDS AND SPONSORSHIPS

Become a future industry leader and have your education paid for by a UniSA partner, such as the Australian Government, a foreign government, employer or partner university. Thrive at UniSA in our highly supported programs for sponsored students and Australia Awards scholarship students.

unisa.edu.au/sponsored-students

international.unisa.edu.au/australiaawards



Cut Dhia Fadhillah

International Master of Business Administration
(Tourism and Event Management)
Australia Awards Scholarship Recipient

GO FURTHER WITH UNISA

As a UniSA student, you can apply for a range of international experiences including semester long student exchanges, study tours, short term study and international virtual opportunities. Earn credit towards your degree while discovering new ways to learn and access our network of international partners.

- › Explore the world
- › Experience different cultures
- › Make lifelong friends
- › Develop your global networks
- › Enhance your resume
- › Boost your future career

unisa.edu.au/studyoverseas



Le Phuong Thanh

Bachelor of Business Management student
– participated in an exchange to Chung Ang
University, South Korea

WELCOME TO ADELAIDE

The University of South Australia is located in Adelaide - Australia's education city and the state capital of South Australia.

As a welcoming and multicultural city, Adelaide is the ideal home away from home.



ADELAIDE IS ONE OF AUSTRALIA'S MOST LIVEABLE CITIES

Ranked #4 in Australia, 2022 Economist Intelligence Unit's Global Liveability Index.

UNISA CITY EAST CAMPUS

ADELAIDE OVAL

10 minute walk to City West campus

RUNDLE MALL

5 minute walk to City East campus

RAILWAY STATION

5 minute walk to City West campus

ADELAIDE CENTRAL MARKET & CHINA TOWN

15 minute walk to City West campus

UNISA BRADLEY BUILDING

UNISA CITY WEST CAMPUS

ROYAL ADELAIDE HOSPITAL

10 minute walk to City West campus

◀ **UNISA MAGILL CAMPUS**
22 minutes from city by bus



▼ **UNISA MAWSON LAKES CAMPUS**
17 minutes from city by express train



GLENELG BEACH ▶
30 minutes from city by tram

DISCOVER ADELAIDE

Adelaide is a cultural destination with many different nationalities, foods, festivals and events. It is home to some of the country's best beaches, wine regions and parklands.

Adelaide is a city shaped by stories. The first of these stories were created by the Kaurna people of the Adelaide Plains, which remain alive today and are interwoven with the stories of all the people who choose to live, work and study in Adelaide. The city is a celebration of diversity and inclusion with a strong sense of community.

MULTICULTURAL

Almost one in four people in South Australia were born overseas with ancestry tracing back to more than 120 countries. Australia also has a democratic system of government and is accepting of different religious beliefs.

ACCESSIBLE

Adelaide offers all the advantages of big city life but is still easy enough to get around. By car, it takes just 15 minutes to travel from the airport to the city and 20 minutes from the city to the beach or hills.

AFFORDABLE

Adelaide has one of the highest standards of living in the world yet is one of the least expensive. This means more money to spend on food, accommodation, supplies, travel and entertainment.

FAST FACTS

Capital city / Adelaide

Metro population / 1.3 million

Language / English

Currency / AUD\$

ADELAIDE IS UP TO 12% MORE AFFORDABLE THAN SYDNEY AND 11% MORE AFFORDABLE THAN MELBOURNE

2022 EIU Cost of Living Survey.



① Kayaking at Port Willunga Beach



② Shopping at the Adelaide Central Market



③ WOMAdelaide festival

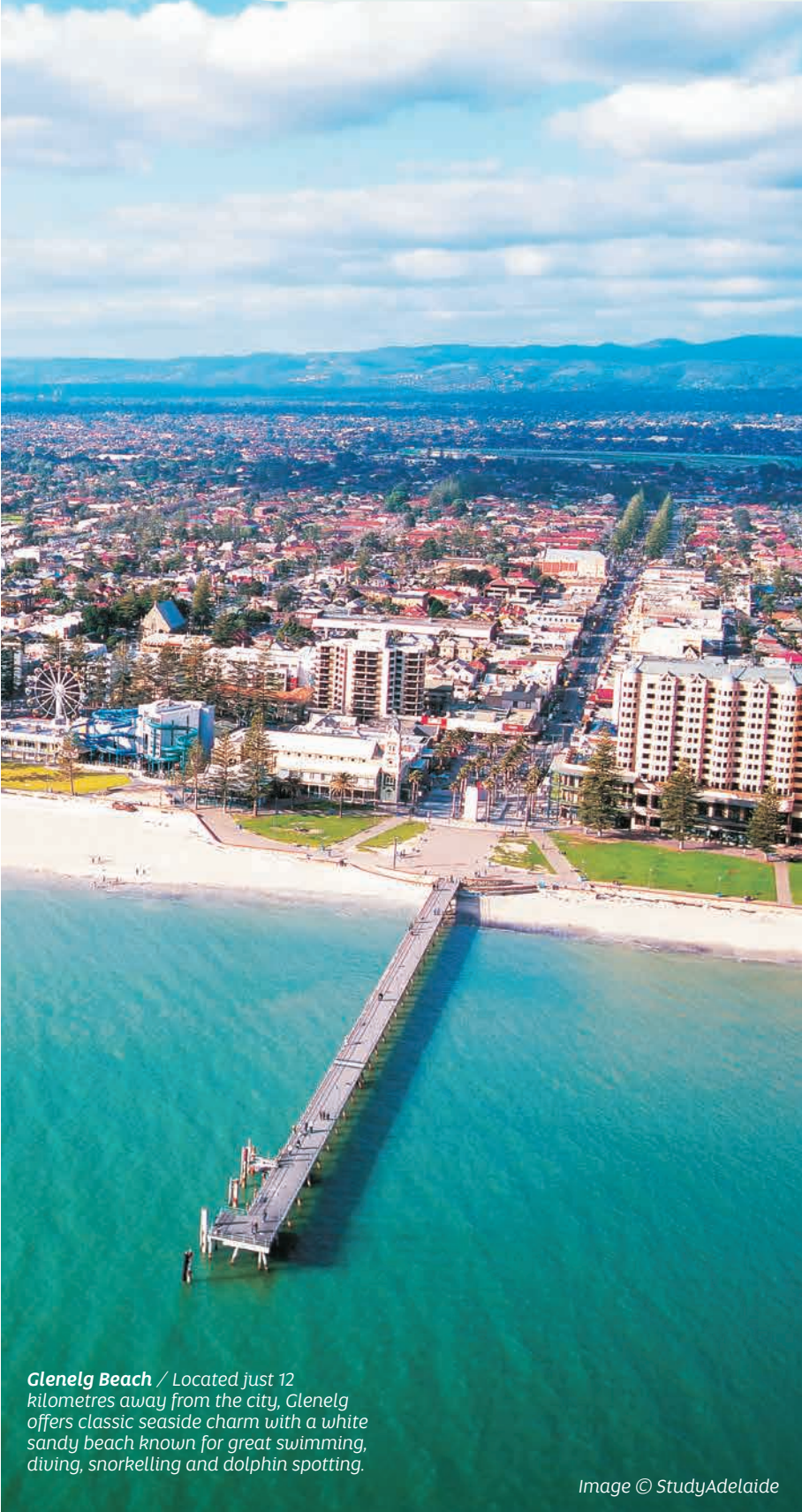


④ Adelaide Oval



ADELAIDE IS ONE OF THE MOST SUSTAINABLE DESTINATIONS WORLDWIDE

Ranked #6, 2022 National Geographic Best of World.



Glenelg Beach / Located just 12 kilometres away from the city, Glenelg offers classic seaside charm with a white sandy beach known for great swimming, diving, snorkelling and dolphin spotting.

Image © StudyAdelaide

STUDENT FRIENDLY

Adelaide is the ideal study location. With free Wi-Fi, free tram and free bus services throughout the city centre, it is truly a student city.

JUMP ON A FREE CITY TRAM

If you need to travel between City West and City East campuses, then jump on the free tram service that runs every 10 minutes. The free tram will also take you to the Adelaide Central Market, Adelaide Railway Station, Royal Adelaide Hospital, Adelaide Botanic Garden and the Adelaide Zoo.

RIDE YOUR BIKE OR SCOOTER

Adelaide is known for its bicycle culture, so we encourage students to ride their bikes, or scooters, to and from campus. Each campus has shower facilities and secure storage areas.

BONUS SAVINGS

As an international student in Adelaide, you will be offered the same public transport discounts as local students, saving you hundreds of dollars every year. You can also work while studying.*

*There are work restrictions for student visa holders, please refer to the Department of Home Affairs website.

🔗 homeaffairs.gov.au

ADELAIDE IS ONE THE WORLD'S TOP 35 BEST STUDENT CITIES

Adelaide ranked #31,
QS Best Student Cities 2023.



COMFORTABLE CLIMATE

Adelaide has a Mediterranean climate with hot, dry summers and mild winters.



Summer
December - February
25°C - 35°C
Hot & dry



Autumn
March - May
20°C - 25°C
Mainly dry



Winter
June - August
10°C - 15°C
Cool & wet



Spring
September - November
20°C - 25°C
Sunny & showers



ACCOMMODATION

Adelaide has a variety of accommodation options to suit your budget and lifestyle. We have a dedicated Accommodation Service with support staff who can help you make the right choice.

- › Student Hostels
- › Homestay
- › Student Apartments
- › Private Rental
- › Residential Colleges

SCAPE AT UNISA

UNISA's student accommodation, Scape at UniSA, is located within easy reach of city and metro campuses, as well as close to CBD transport, shopping and entertainment precincts.

scape
Student Living

UNISA RENTAL DATABASE

Searching for a room in a share-house or looking for a whole property to rent? Take a look at UniSA's Rental Database to explore your options.

🔗 unisa.studystays.com.au

TEMPORARY ACCOMMODATION

If you have not finalised your long-term accommodation, make sure you arrange temporary accommodation before arriving in Adelaide. Plan to arrive two weeks before the start of your degree to allow enough time to select accommodation and get settled.

UNDER THE AGE OF 18?

Please note that students under 18 years of age are eligible only for homestay or homeaway accommodation options (organised by SAIBT or Eynesbury).



SCAN THE QR CODE TO EXPLORE YOUR ACCOMMODATION OPTIONS

For personalised advice contact:

+61 8 8302 0877

accommodation@unisa.edu.au

🔗 unisa.edu.au/accommodation

ADMISSION INFORMATION

UniSA International Admissions is our friendly and professional team, processing applications and answering questions on entry requirements, degree information, applications, acceptances, payments and Confirmation of Enrolments.

ANY QUESTIONS?
Contact us at unisa.edu.au/enquire or phone +61 8 8302 0114



ADMISSION	33
INFORMATION FOR INTERNATIONAL HIGH SCHOOL STUDENTS	34
ENGLISH LANGUAGE REQUIREMENTS	36
UNDERGRADUATE ADMISSION BY COUNTRY/REGION	38
UNDERGRADUATE PATHWAY OPTIONS	40
HOW TO APPLY	42
UNDERGRADUATE DEGREES OFFERED IN 2024	44
POSTGRADUATE DEGREES OFFERED IN 2024	48

ADMISSION

Undergraduate

Here is what you need:

- › An Australian Year 12 or equivalent international program; OR
- › A recognised Pathway or Foundation Studies program; OR
- › A SAIBT, Eynesbury, TAFE SA or other recognised tertiary pathway program.

Postgraduate

Here is what you need:

- › An undergraduate degree, to the required standard, from a recognised higher education institution in Australia or the international equivalent; AND/OR
- › The equivalent professional work experience.

Get the credit you deserve!

Have you...

- › Completed previous studies at university; OR
- › Studied a diploma program or post-secondary qualification; OR
- › Gained work experience in a relevant area?

You may be eligible to receive study credit, exemptions or advanced standing towards your degree.

To check your eligibility, visit creditassessor.unisa.edu.au. If your qualification is not listed, we recommend you submit an application, and include course outlines from your previous studies, so we can make an assessment.

INFORMATION FOR INTERNATIONAL HIGH SCHOOL STUDENTS

UNISA GUARANTEED ENTRY

Through UniSA Guaranteed Entry, you will automatically receive an offer if you meet the set Selection Rank. You can also get guaranteed entry based on your three best Year 12 subject grades for most degrees. If you achieve the grades, along with any prerequisites, and put UniSA as your first preference, you are automatically in.

unisa.edu.au/Year-12

UNISA ACCELERATE

If you are a Year 11 student living in South Australia (including onshore international students), you can apply for the UniSA ACCELERATE program, meaning you can get an early start on your UniSA business degree during Year 12. Study up to two courses through UniSA Online while you are in Year 12 and guarantee your place into one of our many business degrees with study credit. You can also choose to count this study towards your SACE Stage 2. As a minimum, applicants must obtain a band 6.0 on the International English Language Testing System (IELTS) for entry or a B grade in SACE Stage 1 English.

unisa.edu.au/accelerate

HOW TO APPLY

Australian Year 12 programs (Australia and offshore)



1. Find the best degree for you

› You can apply for up to six degrees

satac.edu.au/undergraduate



2. Check the entry/admission requirements

- › Entry is determined by a Selection Rank score, which is your Australian Tertiary Admissions Rank (ATAR), including any Adjustment Factors
- › Adjustment Factors are automatically processed by SATAC and based on any eligible subjects you passed in Year 12 (see next column for more information)



3. Apply via SATAC

- › Apply through the South Australian Tertiary Admissions Centre (SATAC)
- › Applications open in August and close early December (however you can still apply through SATAC until early January)

satac.edu.au/undergraduate



4. Application assessment/accept your offer

- › The first offer round is in December (shortly after Year 12 results are released) with further offer rounds in January
- › You will also receive offers from the University for all your eligible preferences. You will need to respond to the University as soon as possible to secure your place in your offered degree

Other International High School Programs

If you are studying an international high school program outside of Australia, you may still be eligible for direct entry to UniSA. Please follow the steps on page 42-43 to find out how to apply for your degree.

Adjustment factors for students of Australian Year 12 programs

Adjustment factors are automatically processed by the South Australian Tertiary Admissions Centre (SATAC) based on eligible subjects students passed in Year 12.

UNIVERSITIES LANGUAGE, LITERACY AND MATHEMATICS SCHEME

All eligible students will be awarded 2 points, up to a total maximum of 4 points, for successfully completing a subject in any one of these categories:

- › 2O credits of a LOTE in the Languages Learning Area
- › 2ELS2O English Literary Studies or 2ESH2O English
- › 2MHS2O Mathematical Methods or
- › 2MSC2O Specialist Mathematics.

UNIVERSITIES EQUITY SCHEME

Students of certain specified schools in SA/NT will be awarded five adjustment points. The list of eligible schools can be found on the SATAC website and is updated annually.

satac.edu.au/adjustment-factors

ENGLISH LANGUAGE REQUIREMENTS

For 2023, the following SACE subjects or their interstate/international equivalents will be considered acceptable 'Year 12 English subjects':

- › English Literary Studies
- › English
- › Essential English
- › English as an Additional Language

ENGLISH LANGUAGE ENTRY REQUIREMENTS FOR AUSTRALIAN YEAR 12 (SACE), SAT AND IB QUALIFICATIONS

	Undertaken in a recognised English speaking country (e.g. Australia, Malaysia, USA, UK, NZ, Ireland, Canada and Singapore):	Undertaken in a non-English speaking country (e.g. China, Vietnam and Indonesia):
Degrees with an IELTS of 6.0	English language waived as undertaken in an English speaking country where the medium of instruction is English	A score of 10 in one of the approved SACE Year 12 English subjects (or equivalent Australian Year 12/ SAT/ IB score)
Degrees with an IELTS of 6.5	English language waived as undertaken in an English speaking country where the medium of instruction is English	A score of 12 in one of the approved SACE Year 12 English subjects (or equivalent Australian Year 12/ SAT/ IB score)
Degrees with an IELTS of 7.0	A score of 13 in one of the approved SACE Year 12 English subjects (or equivalent Australian Year 12/ SAT/ IB score)	A score of 13 in one of the approved SACE Year 12 English subjects (or equivalent Australian Year 12/ SAT/ IB score)
Bachelor of Nursing (IBNU), Bachelor of Midwifery (IBMW)	Academic IELTS of 7.0 in all bands or 6 years of continuous studies in Australia	

For full degree English entry requirements please visit: unisa.edu.au/english-language-requirements

ENGLISH LANGUAGE REQUIREMENTS

Please review the minimum English language requirements for our degrees. These are provided as a guide only and we recommend you check specific scores for each degree.

unisa.edu.au/english-language-requirements

Undergraduate	Postgraduate
ENGLISH LANGUAGE TEST SCORES	
English language test results are generally valid for two years prior to your date of commencement at UniSA.	
IELTS (International English Language Testing System) (Academic)	
6.0 overall with a 6.0 in Reading and Writing	6.5 overall with a 6.0 in Reading and Writing
Cambridge English C1 Advanced	
169 overall with a 169 in Reading and Writing	176 overall with a 169 in Reading and Writing
TOEFL (Test of English as a Foreign Language)	
iBT (Internet-based test) 60 with 13 in Reading and 21 in Writing	iBT (Internet-based test) 79 with 13 in Reading and 21 in Writing
PTE (Pearson Test of English) Academic	
50 with Reading and Writing communicative score not less than 50	58 with Reading and Writing communicative score not less than 50
ENGLISH LANGUAGE PROGRAM SCORES	
CELUSA	
Successful completion of the Centre for English Language at the University of South Australia (CELUSA) Academic English Program	
Level 4	Level 5
Other qualifications may be accepted	
ENGLISH AS AN OFFICIAL LANGUAGE	
Applicants from countries where English is an official language, or who have recent study experience in an English setting, may be eligible to use this to meet the English language proficiency requirement. This can include particular educational institutions within a non-English speaking country where English is the language of instruction. Certified documentation is required. We will consider all applications on a case-by-case basis.	





University of
South Australia

Centre for
English Language

Centre for English Language (CELUSA)

- › The Centre for English Language at the University of South Australia (CELUSA), located at UniSA's City West campus, delivers high quality Academic English programs designed to prepare students from non-English speaking backgrounds for university study.
- › CELUSA is suited to both undergraduate and postgraduate applicants who do not meet the University's English language entry requirements and offers Academic English (AE) language preparation programs.
- › Students who are eligible for and successfully complete an AE program (at an appropriate level) will be able to commence their studies at UniSA or a pathway program through SAIBT.
- › CELUSA is also an IELTS and OET test centre.

international.unisa.edu.au/celusa

CRICOS provider code: O2193C
TEQSA Provider ID: PRV12102

CELUSA intake dates for 2024

SEMESTER	2024	TERM
CC24O1	8 Jan - 9 Feb	Module 1, Term 1
CC24O2	12 Feb - 15 Mar	Module 2, Term 1
CC24O3	18 Mar - 19 Apr	Module 3, Term 1
1 week holiday		
CC24O4	29 Apr - 31 May	Module 4, Term 2
CC24O5	3 Jun - 5 Jul	Module 5, Term 2
2 weeks holiday		
CC24O6	22 Jul - 23 Aug	Module 6, Term 3
CC24O7	26 Aug - 27 Sep	Module 7, Term 3
1 week holiday		
CC24O8	Tues 8 Oct - 8 Nov	Module 8, Term 4
CC24O9	11 Nov - 13 Dec	Module 9, Term 4

UNDERGRADUATE
ADMISSION REQUIREMENTS BY COUNTRY/REGION

Country/region	Qualifications	Minimum entry requirements
Australia	Year 12 OR Foundation Studies program OR a diploma OR equivalent	Year 12: Selection Rank (ATAR) of at least 64, see <i>Note 3</i> . Students may also be admitted based on Year 12 subject grades, see <i>Note 4</i> . Foundation Studies: assessed on a case-by-case basis.
Argentina	Bachillerato	See <i>Note 1</i>
Bangladesh	Higher Secondary Certificate	Minimum Grade Point Average (GPA) of 3.5 out of 5
Bhutan	Bhutan Higher Secondary Education Certificate (BHSEC) OR Indian Higher Secondary School Certificate (10+2)	Aggregate of at least 60% in best four subjects (excluding any local languages)
Botswana	UK Board GCE A Levels	See <i>Note 2</i>
Brazil	Ensino Secundário Sênior	See <i>Note 1</i>
Brunei	UK board GCE A Levels	See <i>Note 2</i>
Cambodia	Cambodian Baccalaureate/Diploma of Upper Secondary Education	See <i>Note 1</i>
Canada	Secondary School Certificate/Diploma	Best four Grade 12 subjects and the compulsory subject 'English 12'
	Ontario Secondary School Diploma (OSSD)	Best six Grade 12 University Preparation 4U courses or 4M University/College Preparation courses
		Each province/territory has its own High School Certificate and is assessed individually
Chile	Licencia de Educación/Enseñanza Media	See <i>Note 1</i>
China, People's Republic of	National University Entrance Exam (Gaokao)	Minimum 60% Gaokao result
	Senior Middle Three	See <i>Note 1</i>
Colombia	Bachiller/Bachillerato Académico	See <i>Note 1</i>
Denmark	Bevis for Højere Forberedelseseksamen or Bevis for Studentereksamen	Minimum Grade Point Average (GPA) of 02 for both year's study and exams
Ecuador	Titulo de Bachiller	See <i>Note 1</i>
Egypt	General Secondary Education Certificate	See <i>Note 1</i>
Fiji	7th Form Fiji School Leaving Certificate OR 6th Form Certificate plus one year of undergraduate study OR the University of the South Pacific Foundation Year	Assessed on a case-by-case basis
Finland	Ylioppilastutkinto/Studentexamen (Matriculation Examination)	Minimum Grade Point Average (GPA) of 3 out of 7
France	Diplome du Baccalaureate General OR Technologique	Minimum Grade Point Average (GPA) of 10 out of 20
Germany	Zeugnis der Allgemeinen Hochschulreife/Abitur	Minimum Grade Point Average of 4.0
Ghana	GCE A Levels	See <i>Note 2</i>
	West African Senior School Certificate (WASSC)	WASSC with an overall score of 18 or less based on the best six subjects
Hong Kong, SAR	HKDSE	HKDSE is based on best of five subjects (Category A only) from any core or elective subject combination where Level 5**=6pts, 5*=5.5, 5=5, 4=4, 3=3, 2=2, 1=1. Minimum Level 2 is required for core subjects. Specific subject requirements apply for specified programs.
Iceland	Stúdentspróf (Academic) (Matriculation Certificate)	Minimum Grade Point Average (GPA) of 6 out of 10
India	All India Senior School Certificate, Indian School Certificate, Higher Secondary School Certificate, Senior Secondary School Certificate, Intermediate Certificate, Pre-University Certificate	Successful completion of Senior Secondary Certificate (10+2) with an average of at least 60% in best four subjects (excluding any local languages)
Indonesia	SMA 3 plus the National Exam	Satisfactory completion of the Secondary School Certificate of Graduation (SKHUN/STK) with an average score of 65% across all subjects from Years 10-12, excluding all local language and non-academic subjects
International Baccalaureate (IB) Diploma	IB	Minimum Grade Point Average (GPA) of 26 in best six subjects.
Iran	Pre-University Certificate, National High School Diploma	Successful completion of the Pre-University Certificate OR High School Diploma. See <i>Note 1</i> .
Ireland	GCE A Levels	See <i>Note 2</i>
Italy	Diploma di Esame di Stato	Minimum Grade Point Average (GPA) of 60 out of 100
Japan	Upper Secondary Leaving Certificate	Minimum average of 80%
Jordan	General Secondary Education Certificate	See <i>Note 1</i>
Kenya	Kenyan Certificate of Secondary Education (KCSE)	Grade average of B
	UK Board GCE A Levels	See <i>Note 2</i>
Korea, Republic of	Senior High School Diploma	See <i>Note 1</i>
Kuwait	General Secondary Education Certificate OR General Secondary School Certificate	Minimum 70% with higher requirements for some degrees
Laos	Laos Baccalaureate OR Upper Secondary School Diploma	See <i>Note 1</i>
Macau, SAR	GCE A Levels	See <i>Note 2</i>
Malaysia	Malaysian Matriculation (Matrikulasi)/STPM	STPM and Matrikulasi calculation (best 3) A or A-=5pts; B+=4; B=3; B- or C+=2; C=1. Add the points scored for best of three courses attempted at one examination, not including the Islamic and Moral Study subjects for Matrikulasi or the General Paper for Matrikulasi and STPM.
	UEC	UEC calculation (best 5) A1=1pt; A2=2; B3=3; B4=4; B5=5; B6=6; C7=7; C8=8. Aggregate should not include Chinese or Bahasa Malaysia and/or General Paper.
	GCE A Levels	GCE A Level (see <i>Note 2</i>)

Country/region	Qualifications	Minimum entry requirements
Maldives	UCLES A levels/HSC	See <i>Note 2</i>
Mauritius	GCE A Levels	See <i>Note 2</i>
Mexico	Título Académico de Bachiller/Diploma de Bachiller/Bachillerato General	See <i>Note 1</i>
Myanmar	Myanmar Matriculation/Basic Education High School (BEHS) Examination	See <i>Note 1</i>
Nepal	National Examinations Board Certificate	Successful completion of Class XII with a minimum Grade Point Average (GPA) of 2.41
Netherlands	Voorbereidend Wetenschappelijk Onderwijs (VWO) (Gymnasium A/B and Atheneum A/B) Diploma	Minimum Grade Point Average (GPA) of 6
New Zealand	National Certificate of Educational Achievement (NCEA)	Equivalent of eligibility to enter a New Zealand university with the required score equivalent to Australian Selection Rank (ATAR) of 65 or above, see <i>Note 3</i> .
Nigeria	Senior School Certificate (SSC) or West African Senior School Certificate (WASSC)	Successful completion of either the SSC or WASSC with an overall score of 18 or less based on the best six subjects
Norway	Vitnemål fra den videregående skole (Leaving Certificate from Upper Secondary School)	Minimum Grade Point Average (GPA) of 2.8
Oman	General Education Diploma	See <i>Note 1</i>
Pakistan	GCE A Levels	See <i>Note 2</i>
	Higher Secondary School/Intermediate Certificate	Minimum grade average of 75%
Papua New Guinea	Higher School Certificate plus 1 additional year of undergraduate study at a recognised University	Case by case assessment
Peru	Certificado de Educacion Secundaria Comun Completa	See <i>Note 1</i>
Philippines	Senior High School (academic stream)	Minimum of 85% (including 85% for any prerequisite subjects)
Saudi Arabia	General Secondary Education Certificate	See <i>Note 1</i>
Singapore	Singapore GCE A Levels	Successful completion of best three H2 Level subjects or best two H2 Level subjects plus one H1 Level subject with a minimum score of 6 points (grading scale A = 5, B = 4, C = 3, D = 2, E = 1)
South Africa	National Senior Certificate	Successful completion with a Grade Point Average (GPA) of 5, excluding Life Orientation
Spain	Titulo de Bachiller	Minimum Grade Point Average (GPA) of 5 out of 10
Sri Lanka	Sri Lankan General Certificate of Education Advanced Level	Successful completion with a minimum score of 6 (grading scale A = 5, B = 4, C = 3, S = 2). Calculation is based on the best three subjects.
	GCE A Levels	See <i>Note 2</i>
Sweden	Avgångsbetyg/Slutbetyg från Gymnasieskola (Upper Secondary School Certificate)	Minimum Grade Point Average (GPA) of 12.5
Taiwan ROC	Senior High School Diploma/Senior Vocational High School Diploma	Minimum average of 80% or B average
Tanzania	Advanced Certificate of Secondary Education, awarded by the National Examinations Council of Tanzania (NECTA)	See <i>Note 2</i>
Thailand	Mathayom VI and evidence of completion of the Certificate of Secondary Education	Minimum Grade Point Average (GPA) of 3.5
Turkey	High School Diploma	See <i>Note 1</i>
Uganda	Uganda Advanced Certificate of Education (UACE)	See <i>Note 2</i>
United Arab Emirates	General Secondary Education Certificate Examination (General/Religious)	See <i>Note 1</i>
United Kingdom	GCE A Levels	See <i>Note 2</i>
United States of America	US High School Diploma plus appropriate SAT, ACT or AP score	SAT minimum score of 1050. ACT and AP scores are individually assessed.
Venezuela	Bachiller	See <i>Note 1</i>
Vietnam	Bang Tot Nghiep Trung Hoc Pho Thong (Upper Secondary School Graduation Diploma)	Minimum Grade Point Average (GPA) of 7 out of 10. Special considerations may be made for graduates of Vietnamese Gifted Schools.
Zimbabwe	Zimbabwe General Certificate of Education A Levels	See <i>Note 2</i>

Note 1: Students require an additional year of study following their high school studies. This can include the successful completion of a recognised pre-tertiary program; Foundation Studies; or one year of study at a recognised tertiary or higher education institution.

Note 2: Students must have a minimum of six points for entry (some programs require a higher score) and have completed 3x A levels. The score is calculated using the best 3 subjects and can include local languages and 1 Advanced Subsidiary (AS) grade. AS grades cannot be used for any pre-requisite subject/s. The scoring system is A*=6, A=5, B=4, C=3, D=2, E=1.

Note 3: Selection Rank is your Australian Tertiary Admission Rank (ATAR) including any Adjustment Factors (formerly known as Bonus Points).

Note 4: UniSA now offers guaranteed entry based on your three best Year 12 subject grades for most degrees. If you achieve the selection grades, along with any prerequisites, and put UniSA as your first preference, you are automatically in. In addition, you can still aim to achieve the guaranteed Selection Rank and we will admit you automatically on your best result out of the two.

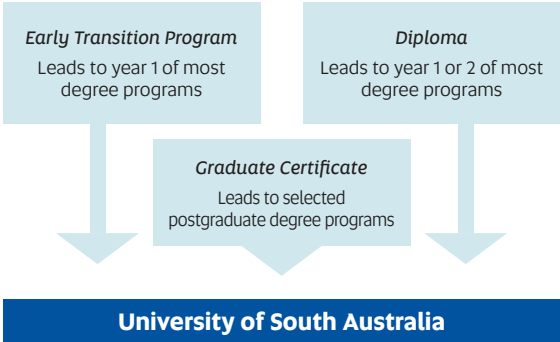
📍 unisa.edu.au/Year-12

For other countries not listed, please contact us at unisa.edu.au/enquire or phone +61 8 8302 0114

UNDERGRADUATE PATHWAY OPTIONS

There are many alternative pathways to help you enter the University of South Australia, visit our website to learn more.

unisa.edu.au/international-pathways



The South Australian Institute of Business and Technology (SAIBT) offers a range of Diploma and Early Transition programs that provide entry into either first or second year of over 90 bachelor degrees at UniSA. SAIBT also offers the Graduate Certificate in Business and Management which offers entry into a range of master's degrees at UniSA.

SAIBT programs include:

Early Transition Program – Arts
Early Transition Program – Engineering
Early Transition Program – Health Science
Diploma of Arts
Diploma of Business
Diploma of Engineering
Diploma of Health Science
Diploma of Information Technology
Graduate Certificate in Business and Management

Located on UniSA's City East campus, SAIBT students have access to University facilities and study in a vibrant and diverse learning environment with small classes and personalised teaching.

saibt.sa.edu.au

saibt@navitas.com

+61 8 8302 2021

CRICOS provider code: 02193C

TEQSA provider ID: PRV12102

Fast-track your studies into your chosen degree at UniSA

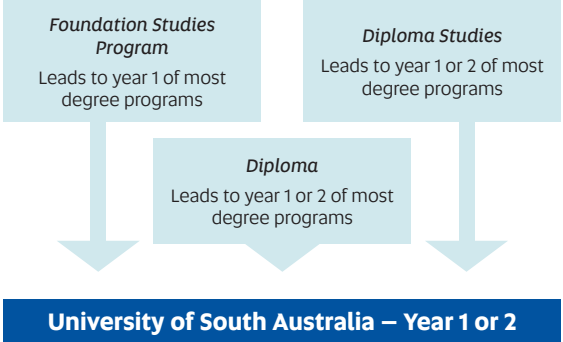
Flexible start dates with three intakes a year - February, June and October

Enjoy small class sizes and high levels of support from qualified staff

Dedicated academic and personal support services available to assist with your success



Discover your SAIBT pathway today



Eynesbury College offers a range of programs that can lead into the first or second year of an undergraduate degree at UniSA.

Eynesbury College programs include:

English Language programs (for undergraduate and postgraduate entry)
Foundation Studies Program
Diploma Studies: Business or Computing and IT
Diploma: Business, Engineering or Computing and IT

Located in the city centre, Eynesbury College is close to our City East and City West campuses, and offers excellent teaching quality and support for students.

eynesbury.edu.au

+61 8 8216 9000

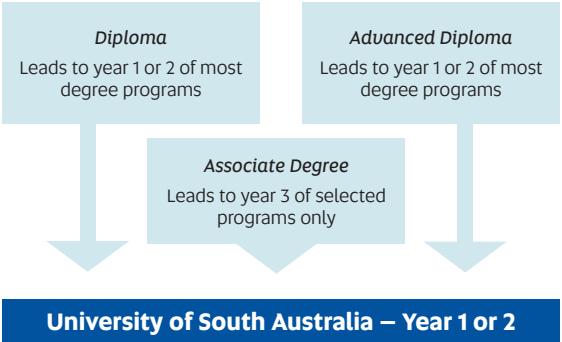
CRICOS provider code: 00561M

TEQSA provider ID: PRV12096



STREAMLINED VISA APPLICATION

Apply to study with one of our education partners and receive a packaged offer that allows you to apply for one student visa for the entire duration of your study under the Simplified Student Visa Framework (SSVF).



TAFE SA packaged programs offer you a practical way of achieving your end goal of an undergraduate degree from UniSA. Successfully completing a TAFE SA Diploma, Advanced Diploma or Associate Degree provides entry into a range of undergraduate degrees at UniSA, and credit for previous study can lead you directly into Year 1, 2 or 3, reducing the overall study time through credit transfers.

tafesa.edu.au/international

international@tafesa.edu.au

+61 8 8463 5487 or

1800 049 492 (for free calls within Australia)

CRICOS provider code: 00092B

RTO code: 41026

IHE code: PRV14002

TEQSA provider ID: PRV14002



CONTACT US

Contact our International Office to find out if you are eligible for entry into a pathway program.

Submit an online form at unisa.edu.au/enquire or phone +61 8 8302 0114

HOW TO APPLY

🔗 international.unisa.edu.au/how-to-apply



1. Find your degree

Explore your study options in this guide (pages 44-49) or go online for more information.

🔗 study.unisa.edu.au



2. Check admission requirements

Make sure you are aware of entry requirements including:

- › English language
- › Academic entry
- › Guidelines on genuine temporary entry
- › Guidelines on living costs and evidence of funds



3. Apply

Once you have found the degree you wish to study, you can apply online either directly or via an Education Agent. Apply at least two months before you intend to start studying. Some students may require more time to ensure they receive their visa.

- › **Apply directly** – You can apply directly via our secure online service. Save your application and return later to continue the process and track your progress.
- › **Education Agents** – Depending on your country of citizenship, you may be required to apply through one of our registered Education Agents:

🔗 unisa.edu.au/find-an-agent

SUPPORTING DOCUMENTATION

To avoid delays, attach the following documents to your online application.

- › Certified* copies of academic transcripts and graduation certificates, including information on your institution's grading system as required
- › English language test results (e.g. IELTS or TOEFL) where applicable
- › Detailed syllabi/course outlines of previous studies if you are applying for credit or advanced standing
- › Additional academic and employer references if required; and
- › A certified* copy of the personal details page and signature page of your passport.

*A certified copy is a copy of the original document that has been certified by an official such as a University of South Australia Education Agent or staff member, Justice of the Peace, notary public, police officer or examining authority.



4. Wait for application assessment

Application outcomes in one to two weeks*

If you are eligible we will email you or your Education Agent, an offer letter package. If you are not eligible, we may suggest alternative programs or pathways. Your application will be assessed in accordance with the University's Selection and Entry to Programs Policy, which includes the guidelines on genuine temporary entry and guidelines on living costs and evidence of funds.

*From your submission including all supporting documentation required



5. Accept your offer

To accept a place in your offered degree, you will need to:

- › Check the offer letter package
- › If all details are correct, log in to our secure online service and complete the steps to accept. This includes uploading any additional documents required, accepting the terms and conditions of your offer and finalising your payment.

If you have an Education Agent, they can help you accept via our secure online service:

🔗 student-unisa.studylink.com

STUDENT VISAS

We will send you or your Education Agent a Confirmation of Enrolment (CoE) document to enable you or your Education Agent to apply for a student visa for your entry into Australia. Apply for your student visa as soon as you receive your CoE.

🔗 unisa.edu.au/student-visa

STUDENT PAYMENTS

UniSA uses Convera which helps you make payments in your preferred currency without extra fees and delays.

- › Pay your tuition fees quickly
- › Make payments online, by bank transfer or via credit card
- › Track payments and receive status updates by text and email.

🔗 international.unisa.edu.au/how-to-apply/pay-your-deposit



6. Prepare for arrival

- › **Enrol online** – you can enrol before you leave home
- › **Book your travel** – check with your travel agent early for flight options but do not confirm bookings until you receive your CoE document. You can also book our free airport pick-up service and on-arrival temporary accommodation to help you get started. You should also check the Department of Home Affairs' Entering & Leaving Australia page for the latest information on Australia's immigration and border arrangements.
- › **Arrive on time** - if you are unable to arrive by the commencement date, you may have to defer your offer as some programs have compulsory orientation
- › **Get ready for Orientation** – attend welcome sessions and activities to meet other students and get to know life on campus and in Adelaide.

🔗 unisa.edu.au/predeparture-checklist



CHAT WITH ONE OF OUR STUDENT AMBASSADORS

Find out what it is like studying at UniSA and living in Adelaide. Chat with a student who speaks your own language or is studying your preferred degree. Our student ambassadors are ready to answer your questions.

🔗 international.unisa.edu.au/student-ambassadors

ANY QUESTIONS?

Contact us at unisa.edu.au/enquire or phone +61 8 8302 0114

Undergraduate degrees offered in 2024

Program	Program Code	CRICOS Code	Program Length (years)	2024 Indicative Annual Tuition Fee (AUD\$)	Start Date(s)	Campus	IELTS English language requirements						Admission requirements by country/region																							
							IELTS Overall	IELTS Reading	IELTS Writing	IELTS Listening	IELTS Speaking		Australian Selection Rank (ATAR)	Year 12 Grades - Guaranteed Entry	Bangladesh HSC	Canada High School (OSSD)	Eynesbury FSP	German Abitur	HKDSE (best 5)	IB (best 6)	India (best 4)	Kenya KCSE (average)	Matriculasi / STPM (best 5)	Malaysia UEC (best 5)	Nepal NEB	Norway GPA	Pakistan HSSC	Sri Lanka A Levels (best 3)	Sweden GPA	UK Board CCE A Levels / HK Board	USA SAT 1600	Vietnam				
ARCHITECTURE, PLANNING AND DESIGN																																				
Bachelor of Architectural Studies	DBAE	060207K	3	37,100	Feb, Jul	CW	6.0	6.0	6.0				70	3B	4	65	330	3.5	15	26	65	B+	6	30	261	3	85	7	13	7	1110	7.5				
Bachelor of Contemporary Art	DBCX	095004K	3	30,900	Feb, Jul	CW	6.0	6.0	6.0				65	2B, 1C	3.5	60	310	3.8	15	26	60	B	6	32	241	2.8	75	6	12.5	6	1050	7				
Bachelor of Design (Graphic and Communication Design)	DBGC	113884H	3	30,900	Feb, Jul	CW	6.0	6.0	6.0				65	2B, 1C	3.5	60	310	3.8	15	26	60	B	6	32	241	2.8	75	6	12.5	6	1050	7				
Bachelor of Design (Illustration and Animation)	DBIA	095761F	3	30,900	Feb, Jul	CW	6.0	6.0	6.0				65	2B, 1C	3.5	60	310	3.8	15	26	60	B	6	32	241	2.8	75	6	12.5	6	1050	7				
Bachelor of Design (Product Design)	DBPR	071953G	3	33,500	Feb	CW	6.0	6.0	6.0				65	2B, 1C	3.5	60	310	3.8	15	26	60	B	6	32	241	2.8	75	6	12.5	6	1050	7				
Bachelor of Interior Architecture	DBIR	024202C	4	33,500	Feb, Jul	CW	6.0	6.0	6.0				66	3B	3.5	65	320	3.5	15	26	63	B	6	31	251	3	80	7	13	7	1110	7.5				
BUSINESS																																				
Bachelor of Accounting *	DBCO	108856K	3	36,100	Feb, Aug	CW	6.0	6.0	6.0				68	3B	3.5	65	320	3.5	15	26	63	B	6	31	251	3	80	7	13	7	1110	7.5				
Bachelor of Business *	DBBN	082882D	3	36,100	Feb, Aug	CW	6.0	6.0	6.0				68	3B	3.5	65	320	3.5	15	26	63	B	6	31	251	3	80	7	13	7	1110	7.5				
Bachelor of Business (Design and Marketing)	DBMD	097501K	3	36,100	Feb, Aug	CW	6.0	6.0	6.0				68	3B	3.5	65	320	3.5	15	26	63	B	6	31	251	3	80	7	13	7	1110	7.5				
Bachelor of Business (Economics, Finance and Trade) *	DBIB	027743E	3	36,100	Feb, Aug	CW	6.0	6.0	6.0				68	3B	3.5	65	320	3.5	15	26	63	B	6	31	251	3	80	7	13	7	1110	7.5				
Bachelor of Business (Financial Planning) *	DBRF	097499K	3	36,100	Feb, Aug	CW	6.0	6.0	6.0				68	3B	3.5	65	320	3.5	15	26	63	B	6	31	251	3	80	7	13	7	1110	7.5				
Bachelor of Business (Human Resource Management)	DBBH	080603K	3	36,100	Feb, Aug	CW	6.0	6.0	6.0				68	3B	3.5	65	320	3.5	15	26	63	B	6	31	251	3	80	7	13	7	1110	7.5				
Bachelor of Business (Innovation and Entrepreneurship) *	DBBN	082892B	3	36,100	Feb, Aug	CW	6.0	6.0	6.0				68	3B	3.5	65	320	3.5	15	26	63	B	6	31	251	3	80	7	13	7	1110	7.5				
Bachelor of Business (International Business)	DBBN	088328D	3	36,100	Feb, Aug	CW	6.0	6.0	6.0				68	3B	3.5	65	320	3.5	15	26	63	B	6	31	251	3	80	7	13	7	1110	7.5				
Bachelor of Business (Logistics and Supply Chain Management) *	DBBL	080915E	3	36,100	Feb, Aug	CW	6.0	6.0	6.0				68	3B	3.5	65	320	3.5	15	26	63	B	6	31	251	3	80	7	13	7	1110	7.5				
Bachelor of Business (Management)	DBBG	080993B	3	36,100	Feb, Aug	CW	6.0	6.0	6.0				68	3B	3.5	65	320	3.5	15	26	63	B	6	31	251	3	80	7	13	7	1110	7.5				
Bachelor of Business (Marketing) *	DBBM	080916D	3	36,100	Feb, Aug	CW	6.0	6.0	6.0				68	3B	3.5	65	320	3.5	15	26	63	B	6	31	251	3	80	7	13	7	1110	7.5				
Bachelor of Business (Property) *	DBPY	024196G	3	36,100	Feb, Aug	CW	6.0	6.0	6.0				68	3B	3.5	65	320	3.5	15	26	63	B	6	31	251	3	80	7	13	7	1110	7.5				
Bachelor of Business (Real Estate Practice)	DBRF	097500M	3	36,100	Feb, Aug	CW	6.0	6.0	6.0				68	3B	3.5	65	320	3.5	15	26	63	B	6	31	251	3	80	7	13	7	1110	7.5				
Bachelor of Business (Sport and Recreation Management)	DBBS	081326G	3	36,100	Feb, Aug	CW	6.0	6.0	6.0				68	3B	3.5	65	320	3.5	15	26	63	B	6	31	251	3	80	7	13	7	1110	7.5				
Bachelor of Business (Tourism, Event and Hospitality Management)	DBBE	112695K	3	36,100	Feb, Aug	CW	6.0	6.0	6.0				68	3B	3.5	65	320	3.5	15	26	63	B	6	31	251	3	80	7	13	7	1110	7.5				
Bachelor of Digital Business	DBDB	109017H	3	39,600	Feb, Aug	CW	6.5	6.5	6.5	6.5	6.5		75	1A, 2B	4	70	350	3.3	16	27	65	B+	7	28	271	3.5	85	7	14	7	1190	8				
Bachelor of Finance *	DBFI	108857J	3	36,100	Feb, Aug	CW	6.0	6.0	6.0				68	3B	3.5	65	320	3.5	15	26	63	B	6	31	251	3	80	7	13	7	1110	7.5				
Bachelor of Marketing and Communication ~	DBMN	060210D	3	36,100	Feb, Aug	CW	6.0	6.0	6.0				68	3B	3.5	65	320	3.5	15	26	63	B	6	31	251	3	80	7	13	7	1110	7.5				
EDUCATION AND TEACHING																																				
Bachelor of Early Childhood Education (Honours)	MHEC	098150J	4	30,900	Feb	M	7.0	7.0	7.0	7.0	7.0		73	1A, 2B	4	65	330	3.5	15	26	65	B+	6	30	261	3	85	7	13	7	1110	7.5				
Bachelor of Primary Education (Honours)	MHPE	098151G	4	30,900	Feb	M	7.0	7.0	7.0	7.0	7.0		73	1A, 2B	4	65	330	3.5	15	26	65	B+	6	30	261	3	85	7	13	7	1110	7.5				
Bachelor of Secondary Education (Honours)	LHSE	108403F	4	30,900	Feb	ML	7.0	7.0	7.0	7.0	7.0		73	1A, 2B	4	65	330	3.5	15	26	65	B+	6	30	261	3	85	7	13	7	1110	7.5				
ENGINEERING, CONSTRUCTION AND AVIATION																																				
Bachelor of Aviation (Flight)	LBAF	095900M	3	41,700	Feb, Jul	ML	6.0	6.0	6.0				70	3B	4	65	330	3.5	15	26	65	B+	6	30	261	3	85	7	13	7	1110	7.5				
Bachelor of Aviation (Management)	LBAN	088879F	3	38,500	Feb, Jul	ML	6.0	6.0	6.0				66	3B	3.5	65	320	3.5	15	26	63	B	6	31	251	3	80	7	13	7	1110	7.5				
Bachelor of Aviation (Pilot) °	LBAN	088880B	3	38,500	Feb, Jul	ML	6.0	6.0	6.0																											
Bachelor of Construction Management	IBBE	099378C	3	37,100	Feb, Jul	CE	6.0	6.0	6.0				67	3B	3.5	65	320	3.5	15	26	63	B	6	31	251	3	80	7	13	7	1110	7.5				
Bachelor of Construction Management (Honours) ▶	IHCN	099379B	4	37,100	Feb, Jul	CE	6.0	6.0	6.0				78	2A, 1B	4	75	370	3	16	29	70	B+	9	26	281	4	85	9	15	9	1270	8.5				
Bachelor of Engineering (Honours) (Civil and Construction Management) ▶	LHMI	099377D	4	39,600	Feb, Jul	ML	6.0	6.0	6.0				72	3B	4	65	330	3.5	15	26	65	B+	6	30	261	3	85	7	13	7	1110	7.5				
Bachelor of Engineering (Honours) (Civil and Structural) ▶	LHMI	081807A	4	39,600	Feb, Jul	ML	6.0	6.0	6.0				72	3B	4	65	330	3.5	15	26	65	B+	6	30	261	3	85	7	13	7	1110	7.5				
Bachelor of Engineering (Honours) (Civil) ▶	LHMI	081808M	4	39,600	Feb, Jul	ML	6.0	6.0	6.0				72	3B	4	65	330	3.5	15	26	65	B+	6	30	261	3	85	7	13	7	1110	7.5				
Bachelor of Engineering (Honours) (Electrical and Electronic) ▶	LHIF	08																																		

Undergraduate degrees offered in 2024

Program	Program Code	CRICOS Code	Program Length (years)	2024 Indicative Annual Tuition Fee (AUD\$)	Start Date(s)	Campus	IELTS English language requirements						Admission requirements by country/region																							
							IELTS Overall	IELTS Reading	IELTS Writing	IELTS Listening	IELTS Speaking		Australian Selection Rank (ATAR)	Year 12 Grades - Guaranteed Entry	Bangladesh HSC	Canada High School (OSSD)	Eynesbury FSP	German Abitur	HKDSE (best 5)	IB (best 6)	India (best 4)	Kenya KCSE (average)	Matriculasi / STPM (best 5)	Malaysia UEC (best 5)	Nepal NEB	Norway GPA	Pakistan HSSC	Sri Lanka A Levels (best 3)	Sweden GPA	UK Board CCE A Levels / HK Board	USA SAT 1600	Vietnam				
NURSING, HEALTH AND MEDICAL SCIENCES																																				
Bachelor of Biomedical Science	IBBM	105413F	3	40,800	Feb	CE	6.5	6.0	6.0	6.0	6.0		72	3B	4	65	330	3.5	15	26	65	B+	6	30	2.61	3	85	7	13	7	1110	7.5				
Bachelor of Biomedical Research (Honours) ~	IHBY	069793C	1	39,600	Feb, Jul	CE	6.5	6.5	6.5	6.5	6.5																									
Bachelor of Clinical Exercise Physiology (Honours)	IHCP	095008F	4	41,700	Feb	CE	6.5	6.5	6.5	6.5	6.5		95	NA	5	95	430	1.5	22	37	88	A	13	20	3.61	5.5	95	13	19	13	1510	9.5				
Bachelor of Exercise and Sport Science	IBXS	094935G	3	33,500	Feb, Jul	CE	6.5	6.5	6.5	6.5	6.5		80	2A, 1B	4	75	370	3	17	29	70	B+	9	26	2.81	4	85	9	15	9	1270	8.5				
Bachelor of Health Science (Public Health)	IBHP	0100073	3	34,300	Feb	CE	6.5	6.5	6.5	6.5	6.5		70	3B	4	65	330	3.5	15	26	65	B+	6	30	2.61	3	85	7	13	7	1110	7.5				
Bachelor of Human Movement	IBHT	027744D	3	33,500	Feb, Jul	CE	6.5	6.5	6.5	6.5	6.5		75	1A, 2B	4	70	350	3.3	16	27	65	B+	7	28	2.71	3.5	85	7	14	7	1190	8				
Bachelor of Laboratory Medicine (Honours)	IHBL	088329C	4	39,600	Feb	CE	6.5	6.5	6.5	6.5	6.5		72	3B	4	65	330	3.5	15	26	65	B+	6	30	2.61	3	85	7	13	7	1110	7.5				
Bachelor of Medical Radiation Science (Medical Imaging) Q	IBRS	088578G	4	41,700	Feb	CE	7.0	7.0	7.0	7.0	7.0		93	NA	5	90	415	1.8	22	35	85	A	12	20	3.41	5	90	12	18	12	1465	9.5				
Bachelor of Medical Radiation Science (Nuclear Medicine) Q	IBRS	088333G	4	41,700	Feb	CE	7.0	7.0	7.0	7.0	7.0		93	NA	5	90	415	1.8	22	35	85	A	12	20	3.41	5	90	12	18	12	1465	9.5				
Bachelor of Medical Radiation Science (Radiation Therapy) Q	IBRS	088335E	4	41,700	Feb	CE	7.0	7.0	7.0	7.0	7.0		93	NA	5	90	415	1.8	22	35	85	A	12	20	3.41	5	90	12	18	12	1465	9.5				
Bachelor of Midwifery Q	IBMW	036241G	3	36,700	Feb	CE	7.0	7.0	7.0	7.0	7.0		93	NA	5	90	415	1.8	22	35	85	A	12	20	3.41	5	90	12	18	12	1465	9.5				
Bachelor of Nursing Q	IBNU	024218F	3	36,700	Feb	CE	7.0	7.0	7.0	7.0	7.0		70	3B	4	65	330	3.5	15	26	65	B+	6	30	2.61	3	85	7	13	7	1110	7.5				
Bachelor of Nutrition and Food Sciences	IBNF	036238C	3	38,500	Feb	CE	6.5	6.5	6.5	6.5	6.5		72	3B	4	65	330	3.5	15	26	65	B+	6	30	2.61	3	85	7	13	7	1110	7.5				
Bachelor of Occupational Therapy (Honours) Q	IHOC	088336D	4	41,700	Feb	CE	7.0	7.0	7.0	7.0	7.0		90	NA	5	85	410	2.5	19	33	80	A	12	22	3.21	5	90	12	17.5	12	1420	9.5				
Bachelor of Outdoor and Environmental Leadership	IBOE	0101602	3	37,100	Feb, Jul	CE	6.0	6.0	6.0				70	3B	4	65	330	3.5	15	26	65	B+	6	30	2.61	3	85	7	13	7	1110	7.5				
Bachelor of Pharmaceutical Science	IBPA	060209G	3	38,500	Feb	CE	6.5	6.5	6.5	6.5	6.5		72	3B	4	65	330	3.5	15	26	65	B+	6	30	2.61	3	85	7	13	7	1110	7.5				
Bachelor of Pharmacy (Honours)	IHPC	088337C	4	43,500	Feb	CE	6.5	6.5	6.5	6.5	6.5		83	2A, 1B	4	75	370	3	17	29	70	B+	9	26	2.81	4	85	9	15	9	1270	8.5				
Bachelor of Physiotherapy (Honours) Q	IHPZ	088338B	4	41,700	Feb	CE	7.0	7.0	7.0	7.0	7.0		93	NA	5	90	415	1.8	22	35	85	A	12	20	3.41	5	90	12	18	12	1465	9.5				
Bachelor of Podiatry Q	IBOP	008312G	4	41,700	Feb	CE	7.0	7.0	7.0	7.0	7.0		87	3A	4.5	80	390	2.8	18	30	75	A-	10	24	3.01	4.5	85	10	16	10	1350	9				
Bachelor of Speech Pathology (Honours) Q	IHSP	0101865	4	41,700	Feb	CE	8.0	8.0	8.0	8.0	8.0		90	NA	5	85	410	2.5	19	33	80	A	12	22	3.21	5	90	12	17.5	12	1420	9.5				
PSYCHOLOGY, SOCIAL WORK AND HUMAN SERVICES																																				
Bachelor of Arts	MBAA	024180D	3	30,900	Feb, Jul	M	6.0	6.0	6.0				65	2B, 1C	3.5	60	310	3.8	15	26	60	B	6	32	2.41	2.8	75	6	12.5	6	1050	7				
Bachelor of Arts (Aboriginal Studies)	MBAA	108402G	3	30,900	Feb, Jul	M	6.0	6.0	6.0				65	2B, 1C	3.5	60	310	3.8	15	26	60	B	6	32	2.41	2.8	75	6	12.5	6	1050	7				
Bachelor of Arts (Applied Linguistics)	MBAA	097509B	3	30,900	Feb, Jul	M	6.0	6.0	6.0				65	2B, 1C	3.5	60	310	3.8	15	26	60	B	6	32	2.41	2.8	75	6	12.5	6	1050	7				
Bachelor of Arts (Creative Writing and Literature)	MBAA	097508C	3	30,900	Feb, Jul	M	6.0	6.0	6.0				65	2B, 1C	3.5	60	310	3.8	15	26	60	B	6	32	2.41	2.8	75	6	12.5	6	1050	7				
Bachelor of Arts (Cultural Studies)	MBAA	097502J	3	30,900	Feb, Jul	M	6.0	6.0	6.0				65	2B, 1C	3.5	60	310	3.8	15	26	60	B	6	32	2.41	2.8	75	6	12.5	6	1050	7				
Bachelor of Arts (History and Global Politics)	MBAA	097504G	3	30,900	Feb, Jul	M	6.0	6.0	6.0				65	2B, 1C	3.5	60	310	3.8	15	26	60	B	6	32	2.41	2.8	75	6	12.5	6	1050	7				
Bachelor of Arts (Languages)	MBAA	081802F	3	30,900	Feb	M	6.0	6.0	6.0				65	2B, 1C	3.5	60	310	3.8	15	26	60	B	6	32	2.41	2.8	75	6	12.5	6	1050	7				
Bachelor of Arts (Law, Policy and Politics)	MBAA	098294D	3	30,900	Feb, Jul	M	6.0	6.0	6.0				65	2B, 1C	3.5	60	310	3.8	15	26	60	B	6	32	2.41	2.8	75	6	12.5	6	1050	7				
Bachelor of Arts (Psychology)	MBAA	097506E	3	30,900	Feb, Jul	M	6.0	6.0	6.0				65	2B, 1C	3.5	60	310	3.8	15	26	60	B	6	32	2.41	2.8	75	6	12.5	6	1050	7				
Bachelor of Arts (Sociology)	MBAA	081805C	3	30,900	Feb, Jul	M	6.0	6.0	6.0				65	2B, 1C	3.5	60	310	3.8	15	26	60	B	6	32	2.41	2.8	75	6	12.5	6	1050	7				
Bachelor of Psychology	MBPU	036236E	3	32,400	Feb, Jul	M	6.0	6.0	6.0				67	3B	3.5	65	320	3.5	15	26	63	B	6	31	2.51	3	80	7	13	7	1110	7.5				
Bachelor of Psychology (Cognitive Neuroscience)	MBPU	079096A	3	32,400	Feb, Jul	M	6.0	6.0	6.0				72	3B	4	65	330	3.5	15	26	65	B+	6	30	2.61	3	85	7	13	7	1110	7.5				
Bachelor of Psychology (Counselling and Interpersonal Skills)	MBPU	081882A	3	32,400	Feb, Jul	M	6.0	6.0	6.0				67	3B	3.5	65	320	3.5	15	26	63	B	6	31	2.51	3	80	7	13							

Postgraduate degrees offered in 2024

							IELTS English language requirements				
Program	Program Code	CRICOS Code	Program Length (years)	2024 Indicative Annual Tuition Fee (AUD\$)	Start Date(s)	Campus	IELTS Overall	IELTS Reading	IELTS Writing	IELTS Listening	IELTS Speaking
ARCHITECTURE, PLANNING AND DESIGN											
Graduate Diploma in Design (Communication Design)	DGSP	082776F	1	36,100	Feb, Jul	CW	6.5	6.0	6.0		
Graduate Diploma in Design (Contemporary Art)	DGSP	095762E	1	36,100	Feb, Jul	CW	6.5	6.0	6.0		
Graduate Diploma in Design (Design and Construct)	DGSP	082775G	1	36,100	Feb, Jul	CW	6.5	6.0	6.0		
Graduate Diploma in Design (Industrial Design)	DGSP	082774G	1	36,100	Feb, Jul	CW	6.5	6.0	6.0		
Graduate Diploma in Design (Interior Architecture)	DGSP	082773J	1	36,100	Feb, Jul	CW	6.5	6.0	6.0		
Graduate Diploma in Design (Sustainable Design)	DGSP	082772K	1	36,100	Feb, Jul	CW	6.5	6.0	6.0		
Graduate Diploma in Urban and Regional Planning	DGUR	000579A	1	38,500	Feb, Jul	CW	6.5	6.0	6.0		
Master of Architecture	DMAE	060208J	2	39,600	Feb, Jul	CW	6.5	6.0	6.0		
Master of Design (Communication Design)	DMSP	082771M	2	36,100	Feb, Jul	CW	6.5	6.0	6.0		
Master of Design (Contemporary Art)	DMSP	095763D	2	36,100	Feb, Jul	CW	6.5	6.0	6.0		
Master of Design (Design and Construct)	DMSP	082770A	2	36,100	Feb, Jul	CW	6.5	6.0	6.0		
Master of Design (Industrial Design)	DMSP	071952G	2	36,100	Feb, Jul	CW	6.5	6.0	6.0		
Master of Design (Interior Architecture)	DMSP	082769E	2	36,100	Feb, Jul	CW	6.5	6.0	6.0		
Master of Design (Sustainable Design)	DMSP	082768F	2	36,100	Feb, Jul	CW	6.5	6.0	6.0		
Master of Urban and Regional Planning	DMUR	071951J	2	38,500	Feb, Jul	CW	6.5	6.0	6.0		
BUSINESS											
Graduate Certificate in Business	DCBZ	081140F	0.5	39,600	Feb, Aug	CW	6.5	6.0	6.0		
Graduate Certificate in Business Administration	DCMA	024119J	0.5	43,800	Jan, Mar, Jun, Sep	CW	6.5	6.0	6.0		
Graduate Certificate in Financial Planning	DCFP	098152G	0.5	39,600	Feb, Aug	CW	6.5	6.0	6.0		
Graduate Certificate in Leadership	DCLD	106892M	0.5	39,600	Feb, Aug	CW	6.5	6.0	6.0		
Graduate Diploma in Business Administration	DGMA	024133M		43,800	Jan, Mar, Jun, Sep	CW	6.5	6.0	6.0		
Graduate Diploma in Financial Planning	DGFP	098153F	1	39,600	Feb, Aug	CW	6.5	6.0	6.0		
International Master of Business Administration	DMIN	081137A	2	39,600	Feb, Aug	CW	6.5	6.0	6.0		
International Master of Business Administration (Advertising and Brand Management)	DMIN	097175G	2	39,600	Feb, Aug	CW	6.5	6.0	6.0		
International Master of Business Administration (Business Analytics)	DMIN	0101921	2	39,600	Feb, Aug	CW	6.5	6.0	6.0		
International Master of Business Administration (Finance)	DMIN	092314J	2	39,600	Feb, Aug	CW	6.5	6.0	6.0		
International Master of Business Administration (Human Resource Management)	DMIN	091996G	2	39,600	Feb, Aug	CW	6.5	6.0	6.0		
International Master of Business Administration (Marketing)	DMIN	091997G	2	39,600	Feb, Aug	CW	6.5	6.0	6.0		
International Master of Business Administration (Supply Chain Management)	DMIN	091995J	2	39,600	Feb, Aug	CW	6.5	6.0	6.0		
International Master of Business Administration (Tourism and Event Management)	DMIN	091994K	2	39,600	Feb, Aug	CW	6.5	6.0	6.0		
Master of Business Administration	DMMA	048635B	1.5	43,800	Jan, Mar, Jun, Sep	CW	6.5	6.0	6.0		
Master of Business Administration (Finance)	DMMA	083050C	1.5	43,800	Jan, Mar, Jun, Sep	CW	6.5	6.0	6.0		
Master of Business Administration (Human Resource Management)	DMMA	083052A	1.5	43,800	Jan, Mar, Jun, Sep	CW	6.5	6.0	6.0		
Master of Business Administration (Marketing)	DMMA	083054K	1.5	43,800	Jan, Mar, Jun, Sep	CW	6.5	6.0	6.0		
Master of Finance	DMFC	082591D	2	39,600	Feb, Aug	CW	6.5	6.0	6.0		
Master of Finance (Financial Planning)	DMFP	098154E	2	39,600	Feb, Aug	CW	6.5	6.0	6.0		
Master of Finance (Global Investment and Trade)	DMFC	0101603	2	39,600	Feb, Aug	CW	6.5	6.0	6.0		
Master of Management	DMMX	091989G	1.5	39,600	Feb, Aug	CW	6.5	6.0	6.0		
Master of Management (Advertising and Brand Management)	DMMX	098292F	1.5	39,600	Feb, Aug	CW	6.5	6.0	6.0		
Master of Management (Business Analytics)	DMMX	0101920	1.5	39,600	Feb, Aug	CW	6.5	6.0	6.0		
Master of Management (Human Resource Management)	DMMX	091992A	1.5	39,600	Feb, Aug	CW	6.5	6.0	6.0		
Master of Management (Marketing)	DMMX	091993M	1.5	39,600	Feb, Aug	CW	6.5	6.0	6.0		
Master of Management (Tourism and Event Management)	DMMX	091990C	1.5	39,600	Feb, Aug	CW	6.5	6.0	6.0		
Master of Professional Accounting	DMPC	082982M	2	39,600	Feb, Aug	CW	6.5	6.0	6.0		
EDUCATION AND TEACHING											
Master of Education	MMEM	111862H	2	33,500	Feb, Jul	M	6.5	6.0	6.0		
Master of Teaching (Early Childhood)	MMET	077214E	2	33,500	Feb	M, ML	7.0	7.0	7.0	7.5	7.5
Master of Teaching (Primary)	MMET	077215D	2	33,500	Feb	M, ML	7.0	7.0	7.0	7.0	7.0
Master of Teaching (Secondary)	MMET	077217B	2	33,500	Feb, Jul	M, ML	7.0	7.0	7.0	7.0	7.0
ENGINEERING, CONSTRUCTION AND AVIATION											
Graduate Certificate in Engineering (Engineering Management)	LCEB	098377A	0.5	41,200	Feb, Jul	ML	6.5	6.0	6.0		
Graduate Diploma in Aviation °	LGAN	102581C	1	112,800	Feb	ML	6.5	6.0	6.0		
Graduate Diploma in Engineering (Engineering Management)	LGEB	077354D	1	41,200	Feb, Jul	ML	6.5	6.0	6.0		
Graduate Diploma in Project Management	ICBP	013176B	1	38,500	Feb, Jul	CE	6.5	6.0	6.0		
Graduate Diploma in Project Management (Contract Management)	ICBP	098253B	1	38,500	Feb, Jul	CE	6.5	6.0	6.0		
Master of Engineering (Civil and Infrastructure) °	LMCL	088538E	2	41,200	Feb, Jul	ML	6.5	6.0	6.0		
Master of Engineering (Cyber Engineering and Telecommunications)	LMEL	106972M	2	41,200	Feb, Jul	ML	6.5	6.0	6.0		
Master of Engineering (Electrical Power) °	LMEL	079908C	2	41,200	Feb, Jul	ML	6.5	6.0	6.0		
Master of Engineering (Engineering Management) °	LMEB	077355C	2	41,200	Feb, Jul	ML	6.5	6.0	6.0		
Master of Engineering (Water Resources Management)	LMCL	088540M	2	41,200	Feb, Jul	ML	6.5	6.0	6.0		



SCAN THE QR CODE TO VIEW THE PROGRAM CHARTS ONLINE

							IELTS English language requirements				
Program	Program Code	CRICOS Code	Program Length (years)	2024 Indicative Annual Tuition Fee (AUD\$)	Start Date(s)	Campus	IELTS Overall	IELTS Reading	IELTS Writing	IELTS Listening	IELTS Speaking
Master of Project and Program Management	IMGM	106890B	1.5	38,500	Feb, Jul	CE	6.5	6.0	6.0		
Master of Project and Program Management (Contract Management)	IMGM	106891A	1.5	38,500	Feb, Jul	CE	6.5	6.0	6.0		
Master of Project Management	IMPA	081832M	2	38,500	Feb, Jul	CE	6.5	6.0	6.0		
FILM, TV, VFX, CREATIVE AND COMMUNICATIONS											
Graduate Certificate in 3D Animation	ICTD	113888D	0.5	14,400	June	CE *	6.5	6.0	6.0		
Graduate Certificate in Compositing and Tracking	ICVE	088908F	0.5	28,800	Feb, Jul	CE *	6.5	6.0	6.0		
Graduate Certificate in Creature Effects	ICCR	113885G	0.5	14,400	June	CE *	6.5	6.0	6.0		
Graduate Certificate in Dynamic Effects and Lighting	ICDL	092822M	0.5	28,800	Feb, Jul	CE *	6.5	6.0	6.0		
Graduate Diploma in Communication	DCCO	0100166	1	32,100	Feb, Jul	CW	6.5	6.0	6.0	6.0	6.0
Master of Communication	DMCO	0100167	2	32,100	Feb, Jul	CW	6.5	6.0	6.0	6.0	6.0
INFORMATION TECHNOLOGY, SCIENCE AND MATHEMATICS											
Graduate Certificate in Data Science	LCDS	079910J	0.5	38,500	Feb, Jul	ML	6.5	6.0	6.0		
Graduate Certificate in Information Technology	LCIG	081820D	0.5	37,100	Feb, Jul	CW, ML	6.5	6.0	6.0		
Graduate Diploma in Data Science	LGDS	079911G	1	38,500	Feb, Jul	ML	6.5	6.0	6.0		
Graduate Diploma in Information Technology (Cyber Security)	LGIG	110777B	1	37,100	Feb, Jul	CW, ML	6.5	6.0	6.0		
Graduate Diploma in Information Technology (Enterprise Management)	LGIG	081822B	1	37,100	Feb, Jul	CW, ML	6.5	6.0	6.0		
Master of Data Science	LMDS	079912G	2	38,500	Feb, Jul	ML	6.5	6.0	6.0		
Master of Information Technology (Cyber Security)	LMIG	110778A	2	37,100	Feb, Jul	CW, ML	6.5	6.0	6.0		
Master of Information Technology (Enterprise Management)	LMIG	081872C	2	37,100	Feb, Jul	CW, ML	6.5	6.0	6.0		
NURSING, HEALTH AND MEDICAL SCIENCES											
Graduate Certificate in Advanced Clinical Musculoskeletal and Sports Physiotherapy	ICMS	0100852	0.5	41,400	Jul	CE	7.0	7.0	7.0	7.0	7.0
Graduate Certificate in Health Services Management	ICHS	102764G	0.5	30,900	Feb, Jul	CE	6.5		6.5		6.5
Graduate Diploma in Health Services Management	IGHM	102765F	1	30,900	Feb, Jul	CE	6.5		6.5		6.5
Graduate Diploma in Medical Sonography (Cardiac)^	IGSO	NOTREQ	1	33,500	Feb, Jul	CE	7.0	7.0	7.0	7.0	7.0
Graduate Diploma in Medical Sonography (General)^	IGSO	NOTREQ	1	33,500	Feb, Jul	CE	7.0	7.0	7.0	7.0	7.0
Graduate Diploma in Medical Sonography (Vascular)^	IGSO	NOTREQ	1	33,500	Feb, Jul	CE	7.0	7.0	7.0	7.0	7.0
Master of Advanced Clinical Physiotherapy (Musculoskeletal)	IMAP	088576K	1	43,500	Jul	CE	7.0	7.0	7.0	7.0	7.0
Master of Advanced Clinical Physiotherapy (Sports)	IMAP	088577J	1	43,500	Jul	CE	7.0	7.0	7.0	7.0	7.0
Master of Health Services Management	IMHM	096783C	2	30,900	Feb, Jul	CE	6.5		6.5		6.5
PSYCHOLOGY, SOCIAL WORK AND HUMAN SERVICES											
Master of Social Work	MMSK	064242G	2	33,900	Feb	M	7.0	7.0	7.0	7.0	7.0

KEY

Campus codes

CE	City East	CW	City West
ML	Mawson Lakes	M	Magill

Symbol codes

Q Quota applies

~ Please note this degree is based at the City West campus however some courses will be offered at the Magill campus.

Please note this degree is based at the Mawson Lakes campus however some courses will be offered at the City West campus.

+ Applicants with a completed bachelor's degree can receive six months of credit and complete this program in three and a half years full-time.

¥ Classes are delivered at Rising Sun Pictures in the Adelaide CBD.

^ This program is not available to onshore student visa holders. If you are planning to commence your studies as an offshore student, please visit our website for a full list of available degrees. Not all degrees listed here are available to offshore students.

° Program not available for direct entry. Students can only apply for this program after they have commenced their first semester in the Bachelor of Aviation (Flight).

▫ Students in this program can choose from 12 Industry Majors to explore their creativity in the area that interests them most including: animation and visual effects, comic book creation, communication and media, contemporary art studies, creative writing and literature, digital media, festivals, film and television, games design and production, performing arts, screen studies, social media.

∞ Not available for direct entry. Students can only apply for this degree after successfully completing a bachelor's degree in a relevant discipline. See website for further details.

* Pathway to Masters

For select degrees, you can fast-track your studies with our Pathway to Masters package. For more information, visit: [study.unisa.edu.au/fast-track-to-masters](#)

► Fast-track Masters in STEM

For select degrees, you can add a fast-track master to the end of your degree (1 year instead of 2). For more information, visit: [international.unisa.edu.au/fast-track-masters-in-stem/](#)

♦ Two masters in two years

For select master degrees, you can potentially complete this degree along with a Master of Project Management as a 'two masters in two years' package, depending on your previous education. For more information, visit: [international.unisa.edu.au/2m2y/](#)

Important Information

The University of South Australia reserves the right to alter, amend or delete any program, fee, course, admission requirement, or mode of delivery without prior notice.

Some programs may have additional entry requirements.

For further details and to view the most up to date program information, visit: [study.unisa.edu.au](#)

Please note the University calculates a Grade Point Average (GPA) on a scale from 1–7. For more information, go to: [unisa.edu.au/gpa](#)

Fees

Tuition fees are based on 2024 fees and are accurate at the time of publication. Fees are subject to change and once you have started your program, your tuition fees will increase each calendar year. However, your fees will not be more than the fees for commencing (new) students in the same year. Your tuition fees will be based on your enrolment and the fees set for that year. You will be liable for these fees upon acceptance of an offer from the University.

In the event of a variation between the fees listed here and the approved tuition fees found on your program page [study.unisa.edu.au](#), the university approved tuition fee will prevail. All fees are listed in Australian dollars (AUD\$).

You may incur incidental fees in addition to your tuition fees during your studies. A list of the estimated non-tuition fees you may incur during your program can be found at [international.unisa.edu.au/non-tuition-fees](#)

How to apply

For more information, visit: [international.unisa.edu.au/how-to-apply](#)

2024 Academic Calendar

SP = Study Period

Semester 1

SP1	8 Jan 2024 – 22 Mar 2024
SP2	19 Feb 2024 – 29 Jun 2024
SP3	1 Apr 2024 – 14 Jun 2024

UnISA Business Only

JOIN OUR CAMPUS COMMUNITY

37,000+

STUDENTS

5,500+

INTERNATIONAL STUDENTS

2,800+

STAFF

230,000+

ALUMNI

30+

RESEARCH INSTITUTES AND CONCENTRATIONS

2,500+

INDUSTRY PARTNERSHIPS

4

METROPOLITAN CAMPUSES

2

REGIONAL CAMPUSES

Figures are indicative of 2021



DIRECT INTERNATIONAL FLIGHTS	DOMESTIC FLIGHTS
Doha / 13 hours 55 minutes	Sydney / 2 hours
Dubai / 13 hours 25 minutes	Melbourne / 1 hour
Guangzhou / 9 hours 10 minutes	Brisbane / 2 hours 20 minutes
Hong Kong / 8 hours 20 minutes	Perth / 3 hours 15 minutes
Kuala Lumpur / 7 hours	
Singapore / 6 hours 30 minutes	
(Approximate times displayed for direct flights to Adelaide)	



University of South Australia



international.unisa.edu.au

Telephone: +61 8 8302 0114

Email: international@unisa.edu.au

Freecall: (Australia) 1800 1818 58

-  youtube.com/unisouthaustralia
-  facebook.com/UniSA
-  twitter.com/UniversitySA
-  instagram.com/universitysa
-  weibo.com/studyatunisa
-  微信公众号：南澳大学国际招生部

The information provided in this publication is for general information only, and the University of South Australia makes no representation about the content, suitability, accuracy or completeness of this information for any purpose. It is provided "as is" without express or implied warranty.

Information correct at time of printing (March 2023)

CRICOS provider number OO121B

Australian University provider number PRV12107



Acknowledgement of Country

UniSA respects the Kurna, Boandik and Barngarla peoples spiritual relationship with their country.

Artist: Ngupulya Pumani

Find out more about the University's commitment to reconciliation at unisa.edu.au/RAP